

À des fins de recherche uniquement

# Anticorps Polyclonal de lapin anti-BMPR2



Numéro de catalogue: 19087-1-AP

Phare

6 Publications

## Informations de base

Numéro de catalogue:  
19087-1-AP

Taille:  
150ul, Concentration: 400 µg/ml by Nanodrop and 367 µg/ml by Bradford method using BSA as the standard;

Hôte:  
Lapin

Isotype:  
IgG

Immunogen Catalog Number:  
AG5868

Numéro d'acquisition GenBank:  
BC052985

Identification du gène (NCBI):  
659

Nom complet:  
bone morphogenetic protein receptor, type II (serine/threonine kinase)

MW calculé  
115 kDa

MW observés:  
120 kDa

Méthode de purification:  
Purification par affinité contre l'antigène

Dilutions recommandées:  
WB 1:1000-1:6000  
IP 0.5-4.0 ug for IP and 1:500-1:3000 for WB  
IHC 1:50-1:500

## Applications

Applications testées:  
FC, IHC, IP, WB, ELISA

Demandes citées:  
IF, WB

Spécificité de l'espèce:  
Humain, rat, souris

Espèces citées:  
Humain, rat, souris

**Remarque-IHC: il est suggéré de démasquer l'antigène avec un tampon de TE buffer pH 9,0; (\*) A défaut, 'le démasquage de l'antigène peut être effectué avec un tampon citrate pH 6,0.**

Contrôles positifs:

WB : tissu cardiaque humain, tissu cérébral de souris

IP : tissu cérébral de souris,

IHC : tissu cardiaque humain,

## Informations générales

BMPs (bone morphogenetic protein) are involved in endochondral bone formation and embryogenesis. BMPR2 encodes a member of the (BMP) receptor family of transmembrane serine/threonine kinases. It is a widely expressed receptor, with high mRNA expression during development in many tissues. Dimer of BMPR2 receptors (70-80 kD) forms a complex with a dimer of type I BMPR1(50-55 kD) in signal transduction. This antibody recognizes endogenous levels of total BMPR2 protein, including 115 kD precursor, 75 kD mature form and 150 kD dimer.

## Publications notables

Autrice	Pubmed ID	Journal	Application
Sanna Vattulainen-Collanus	30272025	Commun Biol	WB
Yongyi Bai	34546460	Basic Res Cardiol	WB,IF
Ling Guo	31578224	J Cell Biol	

## Stockage

Stockage:

Stocker à -20°C. Stable pendant un an après l'expédition.

Tampon de stockage:

PBS avec azoture de sodium à 0,02 % et glycérol à 50 % pH 7,3

L'aliquotage n'est pas nécessaire pour le stockage à -20C

\*\*\* Les 20ul contiennent 0,1% de BSA.

For technical support and original validation data for this product please contact:

T: 1 (888) 4PTGLAB (1-888-478-4522) (toll free in USA), or 1(312) 455-8498 (outside USA)

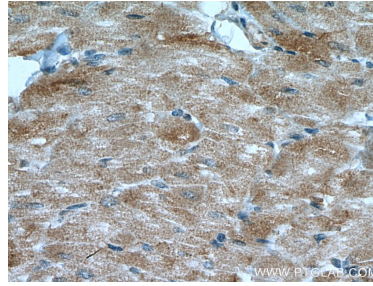
E: proteintech@ptglab.com  
W: ptglab.com

This product is exclusively available under Proteintech Group brand and is not available to purchase from any other manufacturer.

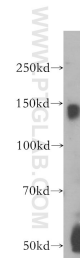
## Données de validation sélectionnées



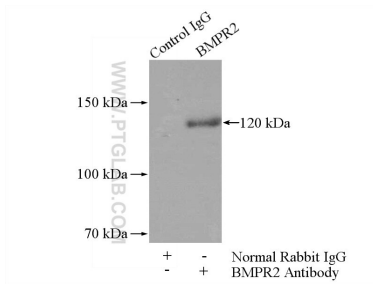
Immunohistochemical analysis of paraffin-embedded human heart tissue slide using 19087-1-AP (BMPR2 antibody) at dilution of 1:200 (under 10x lens). Heat mediated antigen retrieval with Tris-EDTA buffer (pH 9.0).



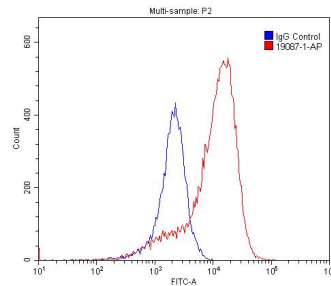
Immunohistochemical analysis of paraffin-embedded human heart tissue slide using 19087-1-AP (BMPR2 antibody) at dilution of 1:200 (under 40x lens). Heat mediated antigen retrieval with Tris-EDTA buffer (pH 9.0).



human heart tissue were subjected to SDS PAGE followed by western blot with 19087-1-AP (BMPR2 antibody) at dilution of 1:400 incubated at room temperature for 1.5 hours.



IP Result of anti-BMPR2 (IP:19087-1-AP, 4ug; Detection:19087-1-AP 1:1500) with mouse brain tissue lysate 4000ug.



1x10<sup>6</sup> PC-3 cells were stained with 0.2ug BMPR2 antibody (19087-1-AP, red) and control antibody (blue). Fixed with 4% PFA blocked with 3% BSA (30 min). Alexa Fluor 488-conjugated AffiniPure Goat Anti-Rabbit IgG(H+L) with dilution 1:1500.