

À des fins de recherche uniquement

Anticorps Polyclonal de lapin anti-CDK6



Numéro de catalogue: 19117-1-AP

Phare

12 Publications

Informations de base

Numéro de catalogue:
19117-1-AP

Taille:
150ul, Concentration: 400 µg/ml by Nanodrop and 267 µg/ml by Bradford method using BSA as the standard;

Hôte:
Lapin

Isotype:
IgG

Immunogen Catalog Number:
AG5600

Numéro d'acquisition GenBank:
BC027989

Identification du gène (NCBI):
1021

Nom complet:
cyclin-dependent kinase 6

MW calculé
326 aa, 36 kDa

MW observés:
36-40 kDa

Méthode de purification:
Purification par affinité contre l'antigène

Dilutions recommandées:
WB 1:1000-1:4000
IP 0.5-4.0 ug for IP and 1:500-1:1000 for WB
IHC 1:50-1:500

Applications

Applications testées:
FC, IHC, IP, WB, ELISA

Demandes citées:
WB

Spécificité de l'espèce:
Humain, rat, souris

Espèces citées:
Humain, souris

Remarque-IHC: il est suggéré de démasquer l'antigène avec un tampon de TE buffer pH 9,0; (*) A défaut, le démasquage de l'antigène peut être effectué avec un tampon citrate pH 6,0.

Contrôles positifs:

WB : cellules HEK-293, cellules HeLa, cellules HepG2, cellules HSC-T6, cellules Jurkat, cellules K-562

IP : cellules Jurkat,

IHC : tissu de cancer du poumon humain, tissu de cancer de l'endomètre humain, tissu de gliome humain

Informations générales

CDK6 (Cyclin-dependent kinase 6) is involved in initiation and maintenance of cell cycle exit during cell differentiation and it prevents cell proliferation and regulates negatively cell differentiation, but is required for the proliferation of specific cell types. The molecular weight of CDK6 is 36-40 kDa (PMID: 23563707, 8114739).

Publications notables

Autrice	Pubmed ID	Journal	Application
Chiao-Yun Lin	34885073	Cancers (Basel)	WB
Zhifeng Lin	25941902	Cancer Biother Radiopharm	WB
Delong Meng	25669971	Oncotarget	WB

Stockage

Stockage:
Stocker à -20°C. Stable pendant un an après l'expédition.

Tampon de stockage:
PBS avec azoture de sodium à 0,02 % et glycérol à 50 % pH 7,3
L'aliquotage n'est pas nécessaire pour le stockage à -20C

*** Les 20ul contiennent 0,1% de BSA.

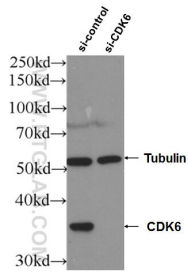
For technical support and original validation data for this product please contact:

T: 1 (888) 4PTGLAB (1-888-478-4522) (toll free in USA), or 1(312) 455-8498 (outside USA)

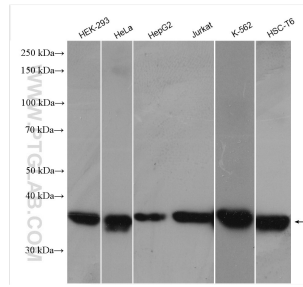
E: proteintech@ptglab.com
W: ptglab.com

This product is exclusively available under Proteintech Group brand and is not available to purchase from any other manufacturer.

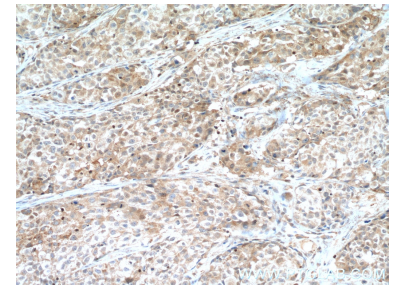
Données de validation sélectionnées



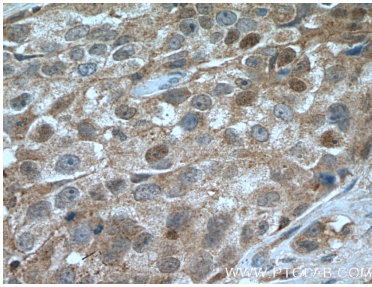
WB result of CDK6 antibody (19117-1-AP; 1:2000; incubated at room temperature for 1.5 hours) with sh-Control and sh-CDK6 transfected HeLa cells.



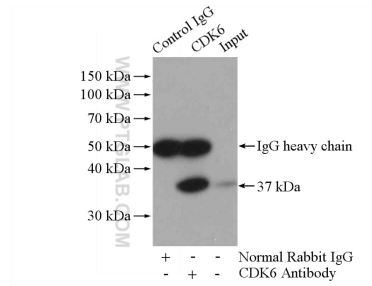
Various lysates were subjected to SDS PAGE followed by western blot with 19117-1-AP (CDK6 antibody) at dilution of 1:2000 incubated at room temperature for 1.5 hours.



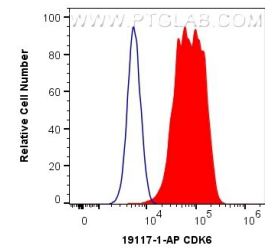
Immunohistochemical analysis of paraffin-embedded human lung cancer tissue slide using 19117-1-AP (CDK6 antibody) at dilution of 1:200 (under 10x lens. Heat mediated antigen retrieval with Tris-EDTA buffer (pH 9.0).



Immunohistochemical analysis of paraffin-embedded human lung cancer tissue slide using 19117-1-AP (CDK6 antibody) at dilution of 1:200 (under 40x lens. Heat mediated antigen retrieval with Tris-EDTA buffer (pH 9.0).



IP Result of anti-CDK6 (IP:19117-1-AP, 4ug; Detection:19117-1-AP 1:700) with Jurkat cells lysate 3200ug.



1×10^6 HeLa cells were intracellularly stained with 0.4 ug Anti-Human CDK6 (19117-1-AP) and CoraLite®488-Conjugated AffiniPure Goat Anti-Rabbit IgG(H+L) at dilution 1:1000 (red), or 0.4 ug Isotype Control. Cells were fixed with 4% PFA and permeabilized with Flow Cytometry Perm Buffer (PF00011-C).