

À des fins de recherche uniquement

Anticorps Polyclonal de lapin anti-DCC-Specific



Numéro de catalogue: 19123-1-AP

2 Publications

Informations de base

Numéro de catalogue:

19123-1-AP

Taille:

150ul, Concentration: 850 µg/ml by Nanodrop and 427 µg/ml by Bradford method using BSA as the standard;

Hôte:

Lapin

Isotype:

IgG

Numéro d'acquisition GenBank:

NM_005215

Identification du gène (NCBI):

1630

Nom complet:

deleted in colorectal carcinoma

MW calculé

1447 aa, 158 kDa

MW observés:

180 kDa

Méthode de purification:

Purification par affinité contre l'antigène

Dilutions recommandées:

WB 1:500-1:1000

Applications

Applications testées:

WB, ELISA

Demandes citées:

IF, WB

Spécificité de l'espèce:

Humain, rat, souris

Espèces citées:

souris

Contrôles positifs:

WB : tissu cérébral de souris,

Informations générales

DCC, also named as IGDC1, belongs to the immunoglobulin superfamily and DCC family. DCC is a receptor for netrin required for axon guidance. DCC mediates axon attraction of neuronal growth cones in the developing nervous system upon ligand binding. Its association with UNC5 proteins may trigger signaling for axon repulsion. It also acts as a dependence receptor required for apoptosis induction when not associated with netrin ligand. DCC gene is a tumor suppressor gene. This antibody raised against a synthesized polypeptide of human DCC protein recognizes endogenous DCC with an apparent molecular weight of 180 kDa. As the predicted molecular mass of DCC is 158 kDa, the slower mobility is likely attributable to post-translational modification, perhaps by glycosylation at potential N-linked glycosylation sites (PMID: 7926722; 8044801).

Publications notables

Autrice	Pubmed ID	Journal	Application
Mian Xiao	34344989	Sci Rep	IF
Dongdong Chai	32271715	Aging (Albany NY)	WB

Stockage

Stockage:

Stocker à -20°C. Stable pendant un an après l'expédition.

Tampon de stockage:

PBS avec azoture de sodium à 0,02 % et glycérol à 50 % pH 7,3

L'aliquotage n'est pas nécessaire pour le stockage à -20C

*** Les 20ul contiennent 0,1% de BSA.

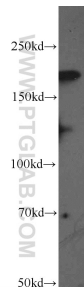
For technical support and original validation data for this product please contact:

T: 1 (888) 4PTGLAB (1-888-478-4522) (toll free in USA), or 1(312) 455-8498 (outside USA)

E: proteintech@ptglab.com
W: ptglab.com

This product is exclusively available under Proteintech Group brand and is not available to purchase from any other manufacturer.

Données de validation sélectionnées



mouse brain tissue were subjected to SDS PAGE followed by western blot with 19123-1-AP (DCC-Specific Antibody) at dilution of 1:600 incubated at room temperature for 1.5 hours.