

À des fins de recherche uniquement

Anticorps Polyclonal de lapin anti-PARK9/ATP13A2



Numéro de catalogue: 19141-1-AP

Informations de base

Numéro de catalogue: 19141-1-AP	Numéro d'acquisition GenBank: BC030267	Méthode de purification: Purification par affinité contre l'antigène
Taille: 150ul , Concentration: 500 µg/ml by Nanodrop;	Identification du gène (NCBI): 23400	Dilutions recommandées: WB 1:200-1:1000 IHC 1:50-1:500
Hôte: Lapin	Nom complet: ATPase type 13A2	
Isotype: IgG	MW calculé: 1158 aa, 126 kDa	
Immunogen Catalog Number: AG11435	MW observés: 125-130 kDa	

Applications

Applications testées: IHC, WB, ELISA	Contrôles positifs: WB : tissu cérébral de souris, IHC : tissu cérébral de souris,
Spécificité de l'espèce: souris	

Remarque-IHC: il est suggéré de démasquer l'antigène avec un tampon de TE buffer pH 9,0; (*) À défaut, 'le démasquage de l'antigène peut être effectué avec un tampon citrate pH 6,0.

Informations générales

ATP13A2 belongs to the P-type superfamily of ATPases that transport inorganic cations and other substrates across cell membranes. It appears to protect cells from manganese and zinc toxicity, possibly by causing cellular efflux and/or lysosomal sequestration; and from iron toxicity, possibly by preserving lysosome integrity against iron-induced lipid peroxidation (21724849)(24334770). However, it potentiates the toxic effects of cadmium and nickel on developing neurites, and of the widely used herbicide paraquat possibly by increasing polyamine uptake. Deficiency is associated with spastic paraplegia and Kufor-Rakeb syndrome, in which there is progressive parkinsonism with dementia.

Stockage

Stockage:
Stocker à -20°C. Stable pendant un an après l'expédition.
Tampon de stockage:
PBS avec azoture de sodium à 0,02 % et glycérol à 50 % pH 7,3
L'aliquotage n'est pas nécessaire pour le stockage à -20C

*** Les 20ul contiennent 0,1% de BSA.

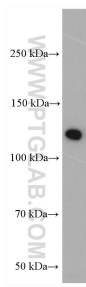
For technical support and original validation data for this product please contact:

T: 1 (888) 4PTGLAB (1-888-478-4522) (toll free in USA), or 1(312) 455-8498 (outside USA)

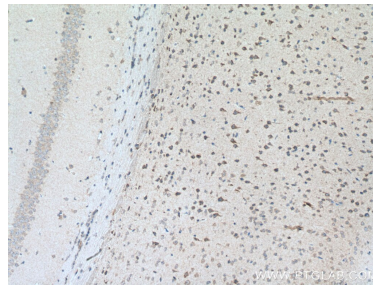
E: proteintech@ptglab.com
W: ptglab.com

This product is exclusively available under Proteintech Group brand and is not available to purchase from any other manufacturer.

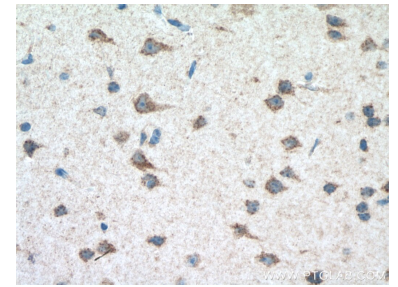
Données de validation sélectionnées



mouse brain tissue were subjected to SDS PAGE followed by western blot with 19141-1-AP (PARK9/ATP13A2 antibody) at dilution of 1:300 incubated at room temperature for 1.5 hours.



Immunohistochemical analysis of paraffin-embedded mouse brain tissue slide using 19141-1-AP (PARK9/ATP13A2 antibody) at dilution of 1:200 (under 10x lens. Heat mediated antigen retrieval with Tris-EDTA buffer (pH 9.0).



Immunohistochemical analysis of paraffin-embedded mouse brain tissue slide using 19141-1-AP (PARK9/ATP13A2 antibody) at dilution of 1:200 (under 40x lens. Heat mediated antigen retrieval with Tris-EDTA buffer (pH 9.0).