

À des fins de recherche uniquement

Anticorps Polyclonal de lapin anti-GDF8/Myostatin



Numéro de catalogue: 19142-1-AP

Phare

27 Publications

Informations de base

Numéro de catalogue:

19142-1-AP

Taille:

150ul, Concentration: 550 µg/ml by Nanodrop and 207 µg/ml by Bradford method using BSA as the standard;

Hôte:

Lapin

Isotype:

IgG

Immunogen Catalog Number:

AG13605

Numéro d'acquisition GenBank:

BC074757

Identification du gène (NCBI):

2660

Nom complet:

myostatin

MW calculé

375 aa, 43 kDa

MW observés:

50 and 35 kDa

Méthode de purification:

Purification par affinité contre l'antigène

Dilutions recommandées:

WB 1:500-1:2000

IHC 1:50-1:500

Applications

Applications testées:

IHC, WB, ELISA

Demandes citées:

IF, IHC, WB

Spécificité de l'espèce:

Humain, souris

Espèces citées:

bovin, Humain, poisson-zèbre, porc, rat, souris

Remarque-IHC: il est suggéré de démasquer l'antigène avec un tampon de TE buffer pH 9,0; (*) A défaut, 'le démasquage de l'antigène peut être effectué avec un tampon citrate pH 6,0.

Contrôles positifs:

WB : tissu placentaire humain, cellules PC-3, tissu cardiaque de souris, tissu hépatique de souris

IHC : tissu cardiaque humain, tissu cérébral de souris

Informations générales

Myostatin, also known as GDF-8, is a member of the TGF-beta superfamily. Myostatin is expressed in the myotome and developing skeletal muscles. Myostatin negatively regulates skeletal muscle growth and development through the regulation of anabolic and catabolic pathways in skeletal muscles. Myostatin immunoreactive bands could be identified at 50, 32-35, and 16 kDa, which correspond to the precursor, glycosylated dimer, and monomer, respectively (PMID: 17711997).

Publications notables

Autrice	Pubmed ID	Journal	Application
Hejie Wang	36178582	In Vitro Cell Dev Biol Anim	WB
Chiara Barisione	34576046	Int J Mol Sci	WB,IHC,IF
Dengqiu Xu	30362548	J Cell Physiol	WB

Stockage

Stockage:

Stocker à -20°C. Stable pendant un an après l'expédition.

Tampon de stockage:

PBS avec azoture de sodium à 0,02 % et glycérol à 50 % pH 7,3

L'aliquotage n'est pas nécessaire pour le stockage à -20C

*** Les 20ul contiennent 0,1% de BSA.

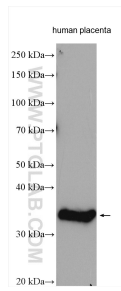
For technical support and original validation data for this product please contact:

T: 1 (888) 4PTGLAB (1-888-478-4522) (toll free in USA), or 1(312) 455-8498 (outside USA)

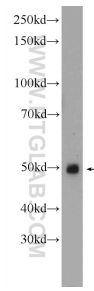
E: proteintech@ptglab.com
W: ptglab.com

This product is exclusively available under Proteintech Group brand and is not available to purchase from any other manufacturer.

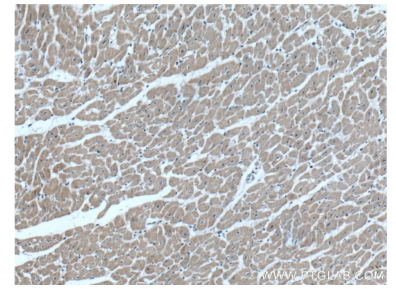
Données de validation sélectionnées



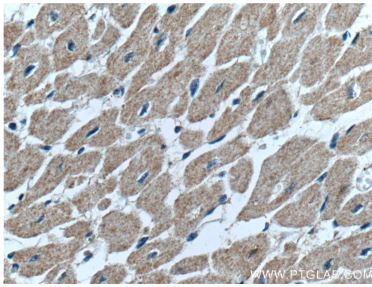
human placenta tissue were subjected to SDS PAGE followed by western blot with 19142-1-AP (GDF8/Myostatin antibody) at dilution of 1:1000 incubated at room temperature for 1.5 hours.



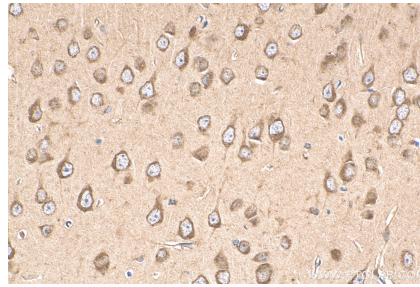
mouse heart tissue were subjected to SDS PAGE followed by western blot with 19142-1-AP (GDF8/Myostatin antibody at dilution of 1:600 incubated at room temperature for 1.5 hours.



Immunohistochemical analysis of paraffin-embedded human heart tissue slide using 19142-1-AP (GDF8/Myostatin antibody at dilution of 1:200 (under 10x lens).



Immunohistochemical analysis of paraffin-embedded human heart tissue slide using 19142-1-AP (GDF8/Myostatin antibody at dilution of 1:200 (under 40x lens).



Immunohistochemical analysis of paraffin-embedded mouse brain tissue slide using 19142-1-AP (GDF8/Myostatin antibody) at dilution of 1:200 (under 40x lens). Heat mediated antigen retrieval with Tris-EDTA buffer (pH 9.0).