

À des fins de recherche uniquement

Anticorps Polyclonal de lapin anti-FANCL



Numéro de catalogue: 19187-1-AP

Informations de base

Numéro de catalogue: 19187-1-AP	Numéro d'acquisition GenBank: BC054517	Méthode de purification: Purification par affinité contre l'antigène
Taille: 150ul , Concentration: 300 µg/ml by Nanodrop and 240 µg/ml by Bradford method using BSA as the standard;	Identification du gène (NCBI): 55120	Dilutions recommandées: WB 1:500-1:1000 IF 1:50-1:500
Hôte: Lapin	Nom complet: Fanconi anemia, complementation group L	
Isotype: IgG	MW calculé: 43 kDa	
Immunogen Catalog Number: AG6192	MW observés: 41-43 kDa	

Applications

Applications testées: IF, WB, ELISA	Contrôles positifs:
Spécificité de l'espèce: Humain, rat, souris	WB : tissu cérébral humain, cellules HEK-293, cellules HeLa
	IF : cellules HeLa,

Informations générales

Fanconi anemia (FA) is a hereditary bone marrow failure syndrome associated with developmental defects and cancer predisposition. The FA nuclear core complex consists of FANCA, B, C, E, F, G, L, and M. FANCL is a RING-type E3 ubiquitin ligase that monoubiquitinates FANCD2 and FANCI, a key functional role facilitated by other members of the nuclear core complex (PMID: 23783032). FANCL plays an important role in the repair of cisplatin-induced DNA damage (PMID: 26385482) and participates directly in support of stem cell function (PMID: 23783032). FANCL can be detected as 40-43 kDa (full-length) and ~28 kDa.

Stockage

Stockage:
Stocker à -20°C. Stable pendant un an après l'expédition.
Tampon de stockage:
PBS avec azoture de sodium à 0,02 % et glycérol à 50 % pH 7,3
L'aliquotage n'est pas nécessaire pour le stockage à -20C

*** Les 20ul contiennent 0,1% de BSA.

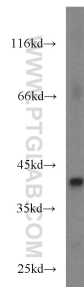
For technical support and original validation data for this product please contact:

T: 1 (888) 4PTGLAB (1-888-478-4522) (toll free in USA), or 1(312) 455-8498 (outside USA)

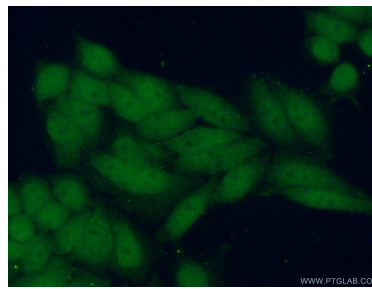
E: proteintech@ptglab.com
W: ptglab.com

This product is exclusively available under Proteintech Group brand and is not available to purchase from any other manufacturer.

Données de validation sélectionnées



human brain tissue were subjected to SDS PAGE followed by western blot with 19187-1-AP (FANCL antibody) at dilution of 1:300 incubated at room temperature for 1.5 hours.



Immunofluorescent analysis of (10% Formaldehyde) fixed HeLa cells using 19187-1-AP (FANCL antibody) at dilution of 1:50 and Alexa Fluor 488-conjugated AffiniPure Goat Anti-Rabbit IgG(H+L).