

À des fins de recherche uniquement

Anticorps Polyclonal de lapin anti-TMEM27



Numéro de catalogue: 19207-1-AP

Informations de base

Numéro de catalogue: 19207-1-AP	Numéro d'acquisition GenBank: BC050606	Méthode de purification: Purification par affinité contre l'antigène
Taille: 150ul , Concentration: 333 µg/ml by Bradford method using BSA as the standard;	Identification du gène (NCBI): 57393	Dilutions recommandées: WB 1:500-1:2000 IHC 1:100-1:400 IF 1:10-1:100
Hôte: Lapin	Nom complet: transmembrane protein 27	
Isotype: IgG	MW calculé 25 kDa	
Immunogen Catalog Number: AG7668	MW observés: 32 kDa	

Applications

Applications testées: IF, IHC, WB, ELISA	Contrôles positifs: WB : tissu pancréatique de souris, tissu rénal de souris IHC : tissu rénal humain, tissu de cancer du foie humain IF : cellules HepG2,
Spécificité de l'espèce: Humain, souris	
Remarque-IHC: il est suggéré de démasquer l'antigène avec un tampon de TE buffer pH 9,0; (*) À défaut, le démasquage de l'antigène peut être effectué avec un tampon citrate pH 6,0.	

Informations générales

TMEM27 (also termed collectrin), a 46 kDa type I transmembrane protein, is a homolog of the noncatalytic domain of angiotensin-converting enzyme-related carboxypeptidase (Ace2). Its expression has only been reported in the brush border membrane of the proximal tubules and collecting ducts of the kidney and in the pancreatic b cell (PMID: 11278314, 16330324). Overexpression of TMEM27 in b cells leads to increased proliferation in vitro and increased pancreatic b cell mass in vivo, and also has been reported to augment glucosestimulated ins secretion (GSIS) (PMID: 16330324, 16330323). The abundance of TMEM27 protein in b cells is furthermore regulated by ectodomain cleavage, which leads to two cleavage products, a 25 kDa N-terminal part that is released into the extracellular space (the shed fragment), and a 22 kDa C-terminal fragment (CTF) remaining in the membrane that is rapidly degraded (PMID: 16330324). TMEM27 is an N-glycosylated protein and can form dimers with MW of 64-75 kDa (patent US 20100119489 A1). TMEM27 can be used as a beta cell mass biomarker (PMID: 20386877, 21907142).

Stockage

Stockage:
Stocker à -20°C. Stable pendant un an après l'expédition.
Tampon de stockage:
PBS avec azoture de sodium à 0,02 % et glycérol à 50 % pH 7,3
L'aliquoteage n'est pas nécessaire pour le stockage à -20C

*** Les 20ul contiennent 0,1% de BSA.

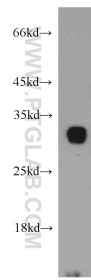
For technical support and original validation data for this product please contact:

T: 1 (888) 4PTGLAB (1-888-478-4522) (toll free in USA), or 1(312) 455-8498 (outside USA)

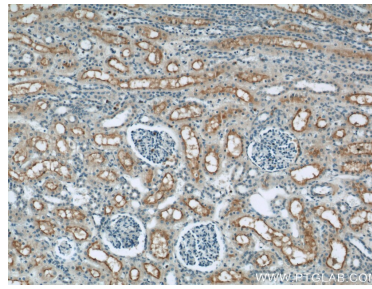
E: proteintech@ptglab.com
W: ptglab.com

This product is exclusively available under Proteintech Group brand and is not available to purchase from any other manufacturer.

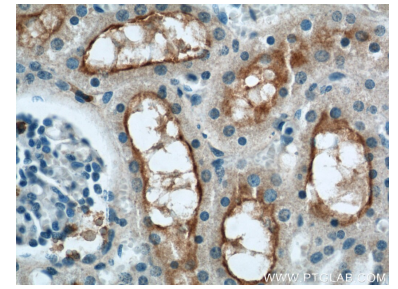
Données de validation sélectionnées



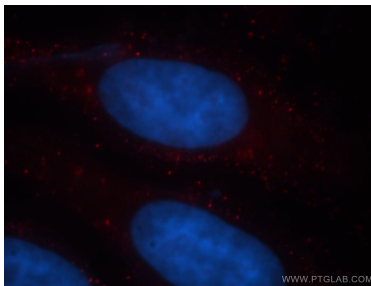
mouse pancreas tissue were subjected to SDS PAGE followed by western blot with 19207-1-AP (TMEM27 antibody) at dilution of 1:500 incubated at room temperature for 1.5 hours.



Immunohistochemical analysis of paraffin-embedded human kidney using 19207-1-AP (TMEM27 antibody) at dilution of 1:50 (under 10x lens).



Immunohistochemical analysis of paraffin-embedded human kidney using 19207-1-AP (TMEM27 antibody) at dilution of 1:50 (under 40x lens).



Immunofluorescent analysis of HepG2 cells, using TMEM27 antibody 19207-1-AP at 1:25 dilution and Rhodamine-labeled goat anti-rabbit IgG (red). Blue pseudocolor = DAPI (fluorescent DNA dye).