

À des fins de recherche uniquement

# Anticorps Polyclonal de lapin anti-CD39/ENTPD1



Numéro de catalogue: 19229-1-AP

5 Publications

## Informations de base

Numéro de catalogue:

19229-1-AP

Taille:

150ul , Concentration: 240 µg/ml by Nanodrop and 200 µg/ml by Bradford method using BSA as the standard;

Hôte:

Lapin

Isotype:

IgG

Immunogen Catalog Number:

AG6165

Numéro d'acquisition GenBank:

BC047664

Identification du gène (NCBI):

953

Nom complet:

ectonucleoside triphosphate diphosphohydrolase 1

MW calculé

58 kDa

MW observés:

75-95 kDa

Méthode de purification:

Purification par affinité contre l'antigène

Dilutions recommandées:

WB 1:500-1:2000

IP 0.5-4.0 ug for IP and 1:500-1:1000 for WB

IHC 1:20-1:200

IF 1:50-1:500

## Applications

Applications testées:

FC, IF, IHC, IP, WB, ELISA

Demandes citées:

FC, IHC, WB

Spécificité de l'espèce:

Humain, rat, souris

Espèces citées:

Humain, rat, souris

**Remarque-IHC: il est suggéré de démasquer l'antigène avec un tampon de TE buffer pH 9.0; (\*) A défaut, 'le démasquage de l'antigène peut être 'effectué avec un tampon citrate pH 6,0.**

Contrôles positifs:

WB : cellules Jurkat, cellules HL-60, tissu cérébral de souris, tissu hépatique de souris, tissu hépatique humain

IP : tissu hépatique de souris,

IHC : tissu placentaire humain, tissu d'amygdalite humain, tissu hépatique humain

IF : tissu placentaire humain,

## Informations générales

ENTPD1(Ectonucleoside triphosphate diphosphohydrolase 1) is also named as CD39, NTPDase 1, Ecto-ATPDase 1 and belongs to the GDA1/CD39 NTPase family. In the nervous system, it can hydrolyze ATP and other nucleotides to regulate purinergic neurotransmission. It is a noncovalent tetrameric protein and that detergent inhibition of enzymatic activity is caused by dissociation of ectoapyrase tetramers into monomers (PMID: 9733785 ). And it is a 70- to 100-kDa protein that is heavily N-glycosylated (PMID: 7930580). It has 3 isoforms produced by alternative splicing. CD39 preferentially occurred as a dimer that could be dissociated into monomeric forms. (PMID: 12694193). The soluble isoform of CD39(38-478 amino acid) locates to the extracellular part and 19229-1-AP recognizes both the 3 isoforms and soluble form of CD39 (38-478aa) molecule.

## Publications notables

Autrice	Pubmed ID	Journal	Application
Wenjia Liu	30210899	Bone Res	WB
Yunshuo Zhao	34648290	J Chem Inf Model	FC
Hao Cui	36436019	Cancer Immunol Immunother	WB,IHC

## Stockage

Stockage:

Stocker à -20°C. Stable pendant un an après l'expédition.

Tampon de stockage:

PBS avec azoture de sodium à 0,02 % et glycérol à 50 % pH 7,3

L'aliquotage n'est pas nécessaire pour le stockage à -20C

\*\*\* Les 20ul contiennent 0,1% de BSA.

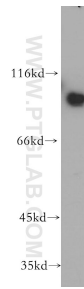
For technical support and original validation data for this product please contact:

T: 1 (888) 4PTGLAB (1-888-478-4522) (toll free in USA), or 1(312) 455-8498 (outside USA)

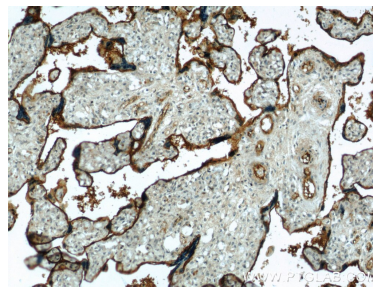
E: proteintech@ptglab.com  
W: ptglab.com

This product is exclusively available under Proteintech Group brand and is not available to purchase from any other manufacturer.

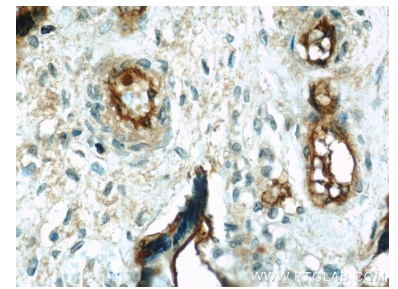
## Données de validation sélectionnées



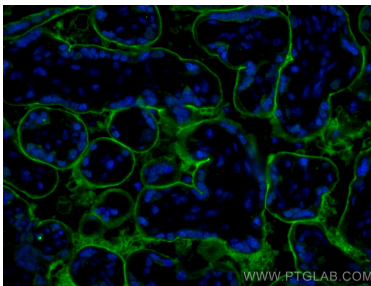
Jurkat cells were subjected to SDS PAGE followed by western blot with 19229-1-AP (CD39 antibody) at dilution of 1:500 incubated at room temperature for 1.5 hours.



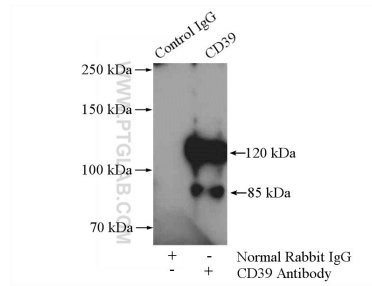
Immunohistochemical analysis of paraffin-embedded human placenta using 19229-1-AP (CD39 antibody) at dilution of 1:50 (under 10x lens).



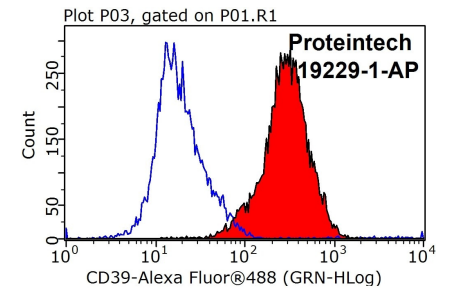
Immunohistochemical analysis of paraffin-embedded human placenta using 19229-1-AP (CD39 antibody) at dilution of 1:50 (under 40x lens).



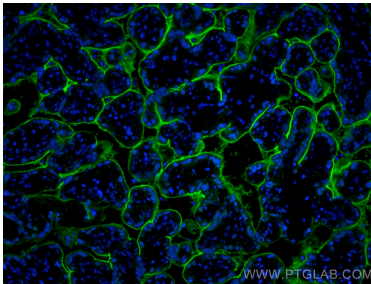
Immunofluorescent analysis of (4% PFA) fixed human placenta tissue using CD39/ENTPD1 antibody (19229-1-AP) at dilution of 1:200 and CoraLite®488-Conjugated AffiniPure Goat Anti-Rabbit IgG(H+L).



IP Result of anti-CD39 (IP:19229-1-AP, 4ug; Detection:19229-1-AP 1:800) with mouse liver tissue lysate 4000ug.



1X10<sup>6</sup> Jurkat cells were stained with 0.5ug CD39 antibody (19229-1-AP, red) and control antibody (blue). Fixed with 90% MeOH blocked with 3% BSA (30 min). Alexa Fluor 488-conjugated AffiniPure Goat Anti-Rabbit IgG(H+L) with dilution 1:1000.



Immunofluorescent analysis of (4% PFA) fixed human placenta tissue using CD39/ENTPD1 antibody (19229-1-AP) at dilution of 1:200 and CoraLite®488-Conjugated AffiniPure Goat Anti-Rabbit IgG(H+L).