

À des fins de recherche uniquement

Anticorps Polyclonal de lapin anti-CHCHD2



Numéro de catalogue: 19424-1-AP

Phare

29 Publications

Informations de base

Numéro de catalogue:

19424-1-AP

Taille:

150ul, Concentration: 550 µg/ml by Nanodrop;

Hôte:

Lapin

Isotype:

IgG

Immunogen Catalog Number:

AG13752

Numéro d'acquisition GenBank:

BC003079

Identification du gène (NCBI):

51142

Nom complet:

coiled-coil-helix-coiled-coil-helix domain containing 2

MW calculé

151 aa, 16 kDa

MW observés:

16-18 kDa

Méthode de purification:

Purification par affinité contre l'antigène

Dilutions recommandées:

WB 1:500-1:2000

IP 0.5-4.0 µg for IP and 1:500-1:2000 for WB

IHC 1:50-1:500

IF 1:200-1:800

Applications

Applications testées:

IF, IHC, IP, WB, ELISA

Demandes citées:

CoIP, IF, IHC, WB

Spécificité de l'espèce:

Humain, souris

Espèces citées:

Drosophile, Humain, souris

Contrôles positifs:

WB : cellules HT-1080, cellules HEK-293, cellules HepG2, tissu de glande surrénale humain

IP : cellules HepG2,

IHC : tissu de cancer du poumon humain, tissu cérébral de souris

IF : cellules HepG2,

Remarque-IHC: il est suggéré de démasquer l'antigène avec un tampon de TE buffer pH 9,0; (*) À défaut, le démasquage de l'antigène peut être effectué avec un tampon citrate pH 6,0.

Informations générales

CHCHD2 is a widely expressed 16.7-kDa mitochondrion-localized protein. CHCHD2 contains a C-terminal CHCH (coiled-coil helix coiled-coil helix) domain. The function of the CHCH domain is not well understood, and the few characterized proteins that harbor this domain have diverse functions. Mutations in CHCHD2 gene have been reported in autosomal dominant Parkinson's disease (ADPD).

Publications notables

Autrice	Pubmed ID	Journal	Application
Alec S T Smith	34660586	Front Cell Dev Biol	IHC
Maxime Feyeux	22678061	Hum Mol Genet	WB
Da-Yuan Chen	33140044	bioRxiv	WB

Stockage

Stockage:

Stocker à -20°C. Stable pendant un an après l'expédition.

Tampon de stockage:

PBS avec azoture de sodium à 0,02 % et glycérol à 50 % pH 7,3

L'aliquotage n'est pas nécessaire pour le stockage à -20C

*** Les 20ul contiennent 0,1% de BSA.

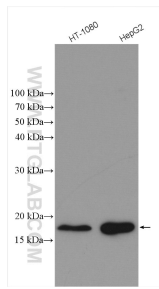
For technical support and original validation data for this product please contact:

T: 1 (888) 4PTGLAB (1-888-478-4522) (toll free in USA), or 1(312) 455-8498 (outside USA)

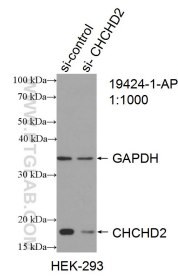
E: proteintech@ptglab.com
W: ptglab.com

This product is exclusively available under Proteintech Group brand and is not available to purchase from any other manufacturer.

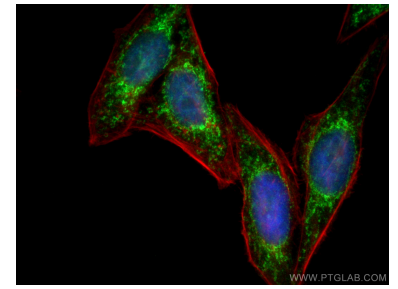
Données de validation sélectionnées



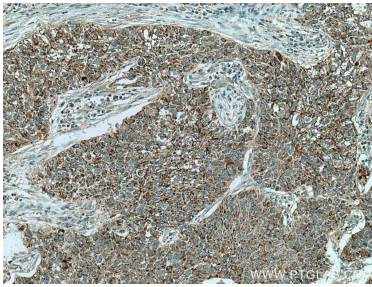
Various lysates were subjected to SDS PAGE followed by western blot with 19424-1-AP (CHCHD2 antibody) at dilution of 1:1000 incubated at room temperature for 1.5 hours.



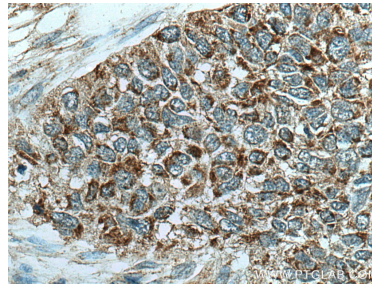
WB result of CHCHD2 antibody (19424-1-AP; 1:1000; incubated at room temperature for 1.5 hours) with sh-Control and sh-CHCHD2 transfected HEK-293 cells.



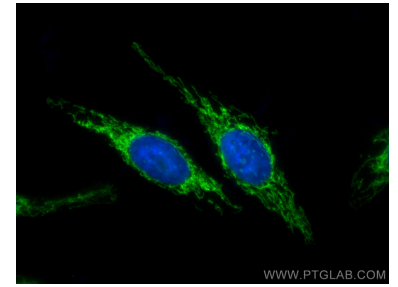
Immunofluorescent analysis of (4% PFA) fixed HepG2 cells using CHCHD2 antibody (19424-1-AP) at dilution of 1:200 and CoraLite@488-Conjugated AffiniPure Goat Anti-Rabbit IgG(H+L), CL594-Phalloidine (red).



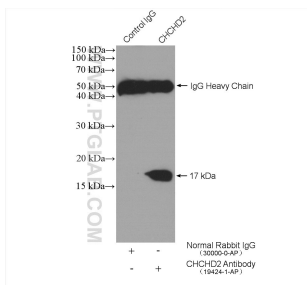
Immunohistochemical analysis of paraffin-embedded human lung cancer tissue slide using 19424-1-AP (CHCHD2 antibody) at dilution of 1:200 (under 10x lens). Heat mediated antigen retrieval with Tris-EDTA buffer (pH 9.0).



Immunohistochemical analysis of paraffin-embedded human lung cancer tissue slide using 19424-1-AP (CHCHD2 antibody) at dilution of 1:200 (under 40x lens). Heat mediated antigen retrieval with Tris-EDTA buffer (pH 9.0).



Immunofluorescent analysis of (4% PFA) fixed HepG2 cells using CHCHD2 antibody (19424-1-AP) at dilution of 1:400 and CoraLite@488-Conjugated AffiniPure Goat Anti-Rabbit IgG(H+L).



IP result of anti-CHCHD2 (IP:19424-1-AP, 4ug; Detection:19424-1-AP 1:1000) with HepG2 cells lysate 2520 ug.