

À des fins de recherche uniquement

# Anticorps Polyclonal de lapin anti-SEZ6L2



Numéro de catalogue: 19428-1-AP

## Informations de base

<b>Numéro de catalogue:</b> 19428-1-AP	<b>Numéro d'acquisition GenBank:</b> BC000567	<b>Méthode de purification:</b> Purification par affinité contre l'antigène
<b>Taille:</b> 150ul , Concentration: 600 µg/ml by Nanodrop;	<b>Identification du gène (NCBI):</b> 26470	<b>Dilutions recommandées:</b> WB 1:1000-1:4000
<b>Hôte:</b> Lapin	<b>Nom complet:</b> seizure related 6 homolog (mouse)-like 2	
<b>Isotype:</b> IgG	<b>MW calculé:</b> 910 aa, 98 kDa	
<b>Immunogen Catalog Number:</b> AG13760	<b>MW observés:</b> 150 kDa	

## Applications

<b>Applications testées:</b> WB, ELISA	<b>Contrôles positifs:</b> WB : tissu cérébral de souris, tissu cérébral de rat
<b>Spécificité de l'espèce:</b> Humain, rat, souris	

## Informations générales

Seizure 6-like protein 2 (SEZ6L2) is a type 1 transmembrane protein predominantly expressed in the brain. It belongs to the seizure-related gene 6 (SEZ6) family, which contains SEZ6, SEZ6L and SEZ6L2. SEZ6 family members have been shown to influence synapse numbers and dendritic morphology and are linked to various neurological and psychiatric disorders (PMID: 33936031). SEZ6L2 is a part of the AMPA receptor and acts as a scaffolding protein to link GluR1 to adducin (PMID: 29032200). Overexpression of SEZ6L2 has been reported in a variety of cancers, including lung cancer, hepatocellular carcinoma, thyroid carcinoma, cholangiocarcinoma (PMID: 16863507; 35117286; 35284305; 32148567). SEZ6L2 can be glycosylated and the apparent molecular weight can be raised to 150-170 kDa (PMID: 26698217; 24272587).

## Stockage

**Stockage:**  
Stocker à -20°C. Stable pendant un an après l'expédition.  
**Tampon de stockage:**  
PBS avec azoture de sodium à 0,02 % et glycérol à 50 % pH 7,3  
L'aliquotage n'est pas nécessaire pour le stockage à -20C

\*\*\* Les 20ul contiennent 0,1% de BSA.

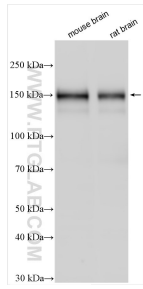
For technical support and original validation data for this product please contact:

T: 1 (888) 4PTGLAB (1-888-478-4522) (toll free in USA), or 1(312) 455-8498 (outside USA)

E: [proteintech@ptglab.com](mailto:proteintech@ptglab.com)  
W: [ptglab.com](http://ptglab.com)

This product is exclusively available under Proteintech Group brand and is not available to purchase from any other manufacturer.

## Données de validation sélectionnées



Various lysates were subjected to SDS PAGE followed by western blot with 19428-1-AP (SEZ6L2 antibody) at dilution of 1:2000 incubated at room temperature for 1.5 hours.