

À des fins de recherche uniquement

Anticorps Polyclonal de lapin anti-Nestin



Numéro de catalogue: 19483-1-AP

70 Publications

Informations de base

Numéro de catalogue:

19483-1-AP

Taille:

150ul, Concentration: 600 µg/ml by Nanodrop;

Hôte:

Lapin

Isotype:

IgG

Numéro d'acquisition GenBank:

NM_006617

Identification du gène (NCBI):

10763

Nom complet:

nestin

MW calculé

177 kDa

MW observés:

170-180 kDa

Méthode de purification:

Purification par affinité contre l'antigène

Dilutions recommandées:

WB 1:500-1:1000

IHC 1:200-1:800

IF 1:50-1:500

Applications

Applications testées:

IF, IHC, WB, ELISA

Demandes citées:

FC, IF, IHC, WB

Spécificité de l'espèce:

Humain, rat, souris

Espèces citées:

Humain, poisson-zèbre, rat, souris

Remarque-IHC: il est suggéré de démasquer l'antigène avec un tampon de TE buffer pH 9,0; (*) À défaut, le démasquage de l'antigène peut être effectué avec un tampon citrate pH 6,0.

Contrôles positifs:

WB : tissu cérébral de souris, tissu cérébral de rat

IHC : tissu rénal humain, tissu cérébral de souris, tissu de gliome humain

IF : tissu cérébral de rat, cellules SH-SY5Y, cellules U-251, tissu cérébral de souris

Informations générales

Nestin, also named as NES and Nbla00170, is a class VI intermediate filament protein expressed in stem cells of the central nervous system (CNS) but not in mature CNS cells. Its expression is used extensively as a marker for neural lineage cells derived from human embryonic stem (hES) and induced pluripotent stem (iPS) cells. Nestin is also expressed in non-neural stem cell populations such as pancreatic islet progenitors and hematopoietic progenitors. Nestin can be detected as 220-240 kDa and 240-280 kDa. Studies point toward nestin heavy posttranslational modifications as possibly serving particular functions in podocytes and in a few other particular cell types (PMID: 17210924).

Publications notables

Autrice	Pubmed ID	Journal	Application
Chenlong Li	31558707	Cell Death Dis	WB
Lili Ma	36132985	J Immunol Res	IF
Jiansheng Chen	31511040	J Exp Clin Cancer Res	WB

Stockage

Stockage:

Stocker à -20°C. Stable pendant un an après l'expédition.

Tampon de stockage:

PBS avec azoture de sodium à 0,02 % et glycérol à 50 % pH 7,3

L'aliquotage n'est pas nécessaire pour le stockage à -20C

*** Les 20ul contiennent 0,1% de BSA.

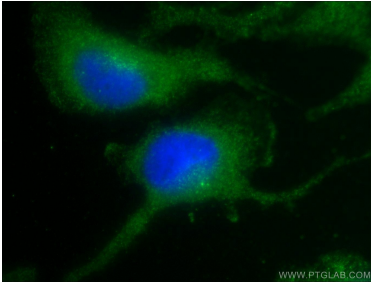
For technical support and original validation data for this product please contact:

T: 1 (888) 4PTGLAB (1-888-478-4522) (toll free in USA), or 1(312) 455-8498 (outside USA)

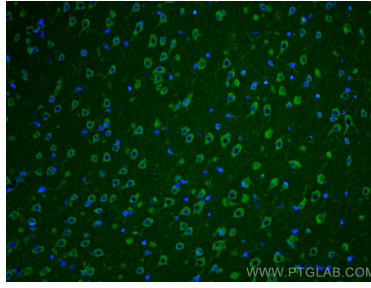
E: proteintech@ptglab.com
W: ptglab.com

This product is exclusively available under Proteintech Group brand and is not available to purchase from any other manufacturer.

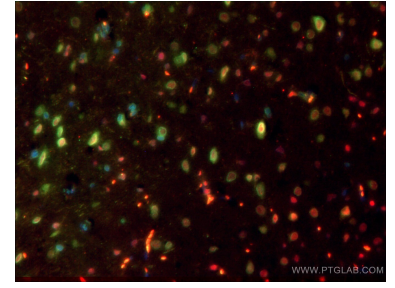
Données de validation sélectionnées



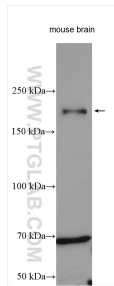
Immunofluorescent analysis of U-251 cells using 19483-1-AP (Nestin antibody) at dilution of 1:25 and Alexa Fluor 488-conjugated AffiniPure Goat Anti-Rabbit IgG(H+L).



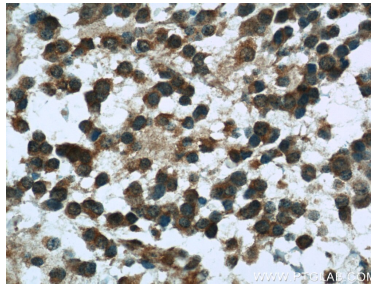
Immunofluorescent analysis of (4% PFA) fixed rat brain tissue using Nestin antibody (19483-1-AP) at dilution of 1:200 and CoraLite®488-Conjugated AffiniPure Goat Anti-Rabbit IgG(H+L).



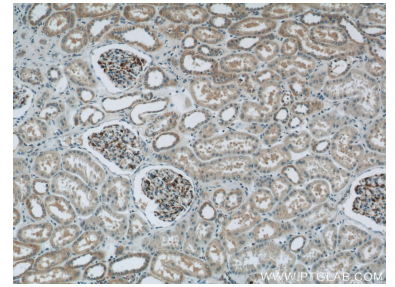
Immunofluorescent analysis of (4% PFA) fixed rat brain tissue using 19483-1-AP (Nestin antibody) at dilution of 1:100 and CoraLite488-Conjugated AffiniPure Goat Anti-Rabbit IgG(H+L). The section was co-stained with sox2 (66411-1-Ig, red).



Mouse brain lysates were subjected to SDS PAGE followed by western blot with 19483-1-AP (Nestin antibody) at dilution of 1:500 incubated at room temperature for 1.5 hours.



Immunohistochemical analysis of paraffin-embedded human gliomas tissue slide using 19483-1-AP (Nestin Antibody) at dilution of 1:100 (under 40x lens).



Immunohistochemical analysis of paraffin-embedded human kidney tissue slide using 19483-1-AP (Nestin Antibody) at dilution of 1:400 (under 10x lens).