

À des fins de recherche uniquement

Anticorps Polyclonal de lapin anti-MAST3



Numéro de catalogue: 19507-1-AP

Informations de base

Numéro de catalogue:
19507-1-AP

Taille:
150ul, Concentration: 550 µg/ml by
Nanodrop and 333 µg/ml by Bradford
method using BSA as the standard;

Hôte:
Lapin

Isotype:
IgG

Numéro d'acquisition GenBank:
NM_015016

Identification du gène (NCBI):
23031

Nom complet:
microtubule associated
serine/threonine kinase 3

MW calculé
143 kDa

MW observés:
144 kDa

Méthode de purification:
Purification par affinité contre
l'antigène

Dilutions recommandées:
WB 1:500-1:3000
IP 0.5-4.0 ug for IP and 1:500-1:1000
for WB
IHC 1:20-1:200
IF 1:10-1:100

Applications

Applications testées:
IF, IHC, IP, WB, ELISA

Spécificité de l'espèce:
Humain, rat, souris

**Remarque-IHC: il est suggéré de démasquer
l'antigène avec un tampon de TE buffer pH
9.0; (*) À défaut, 'le démasquage de
l'antigène peut être effectué avec un
tampon citrate pH 6,0.**

Contrôles positifs:

WB : cellules Jurkat, tissu cérébral de rat, tissu cérébral
de souris, tissu cérébral humain, tissu pulmonaire de
souris

IP : cellules Jurkat,

IHC : tissu rénal humain,

IF : cellules HepG2,

Informations générales

MAST3, also named as KIAA0561, belongs to the protein kinase superfamily and AGC Ser/Thr protein kinase family. MAST3 catalyze the reaction: ATP + a protein = ADP + a phosphoprotein.

Stockage

Stockage:

Stocker à -20°C. Stable pendant un an après l'expédition.

Tampon de stockage:

PBS avec azoture de sodium à 0,02 % et glycérol à 50 % pH 7,3

L'aliquotage n'est pas nécessaire pour le stockage à -20C

*** Les 20ul contiennent 0,1% de BSA.

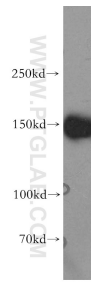
For technical support and original validation data for this product please contact:

T: 1 (888) 4PTGLAB (1-888-478-4522) (toll free
in USA), or 1(312) 455-8498 (outside USA)

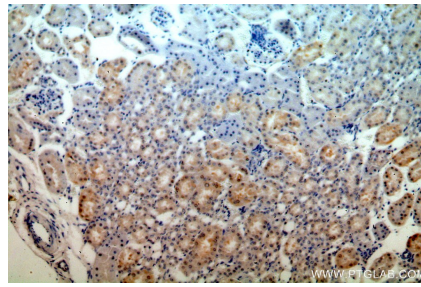
E: proteintech@ptglab.com
W: ptglab.com

This product is exclusively available under Proteintech Group brand and is not available to purchase from any other manufacturer.

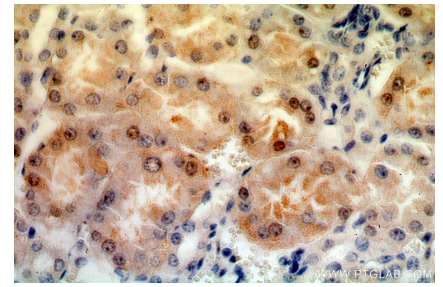
Données de validation sélectionnées



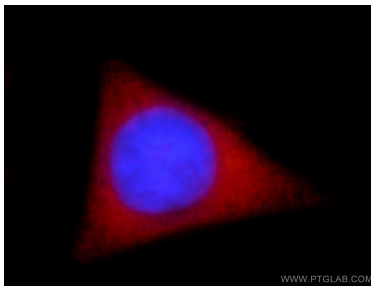
Jurkat cells were subjected to SDS PAGE followed by western blot with 19507-1-AP (MAST3 antibody) at dilution of 1:500 incubated at room temperature for 1.5 hours.



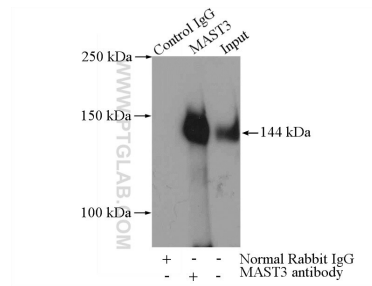
Immunohistochemical analysis of paraffin-embedded human kidney using 19507-1-AP (MAST3 antibody) at dilution of 1:100 (under 10x lens).



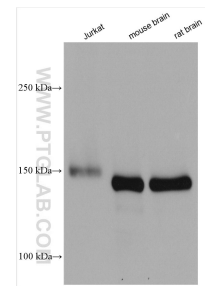
Immunohistochemical analysis of paraffin-embedded human kidney using 19507-1-AP (MAST3 antibody) at dilution of 1:100 (under 40x lens).



Immunofluorescent analysis of HepG2 cells, using MAST3 antibody 19507-1-AP at 1:25 dilution and Rhodamine-labeled goat anti-rabbit IgG (red). Blue pseudocolor = DAPI (fluorescent DNA dye).



IP Result of anti-MAST3 (IP:19507-1-AP, 4ug; Detection:19507-1-AP 1:500) with Jurkat cells lysate 4000ug.



Various lysates were subjected to SDS PAGE followed by western blot with 19507-1-AP (MAST3 antibody) at dilution of 1:3000 incubated at room temperature for 1.5 hours.