

À des fins de recherche uniquement

# Anticorps Polyclonal de lapin anti-PRSS27



Numéro de catalogue: 19515-1-AP

## Informations de base

Numéro de catalogue:  
19515-1-AP

Taille:  
150ul, Concentration: 350 µg/ml by  
Nanodrop and 267 µg/ml by Bradford  
method using BSA as the standard;

Hôte:  
Lapin

Isotype:  
IgG

Numéro d'acquisition GenBank:  
NM\_031948

Identification du gène (NCBI):  
83886

Nom complet:  
protease, serine 27

MW calculé  
32 kDa

MW observés:  
28 kDa

Méthode de purification:  
Purification par affinité contre  
l'antigène

Dilutions recommandées:  
WB 1:200-1:1000  
IP 0.5-4.0 ug for IP and 1:200-1:1000  
for WB  
IHC 1:50-1:500

## Applications

Applications testées:  
IHC, IP, WB, ELISA

Spécificité de l'espèce:  
Humain, souris

**Remarque-IHC: il est suggéré de démasquer l'antigène avec un tampon de TE buffer pH 9.0; (\*) À défaut, le démasquage de l'antigène peut être effectué avec un tampon citrate pH 6.0.**

Contrôles positifs:

WB : tissu pancréatique de souris,

IP : cellules SW-1990,

IHC : tissu pancréatique humain, tissu de cancer de l'œsophage humain, tissu pancréatique de souris

## Informations générales

PRSS27, also named as CAPH2, MPN, belongs to the peptidase S1 family. The trypsin-like serine protease marapsin (Prss27) is a member of the large protease gene cluster at human chromosome 16p13.3. The Prss27 gene is expressed by a variety of human, mouse, and opossum tissues. In humans and mice, it is especially abundant in stratified squamous epithelia of cornea, larynx, esophagus, and cervix and is induced in wounded and psoriatic skin (PMID: 23447538). Prss27 expression was restricted to tissues containing stratified squamous epithelia and was absent or only weakly expressed in all other tissues, including the pancreas.

## Stockage

Stockage:

Stocker à -20°C. Stable pendant un an après l'expédition.

Tampon de stockage:

PBS avec azoture de sodium à 0,02 % et glycérol à 50 % pH 7,3

L'aliquotage n'est pas nécessaire pour le stockage à -20C

\*\*\* Les 20ul contiennent 0,1% de BSA.

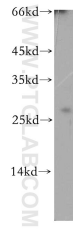
For technical support and original validation data for this product please contact:

T: 1 (888) 4PTGLAB (1-888-478-4522) (toll free  
in USA), or 1(312) 455-8498 (outside USA)

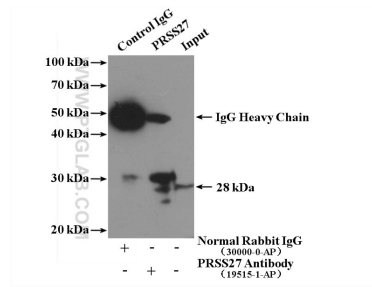
E: proteintech@ptglab.com  
W: ptglab.com

This product is exclusively available under Proteintech Group brand and is not available to purchase from any other manufacturer.

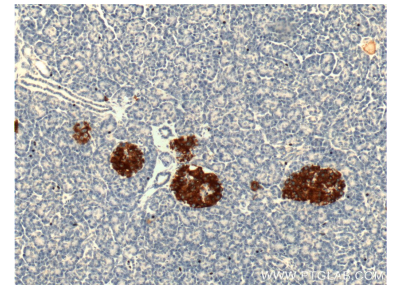
## Données de validation sélectionnées



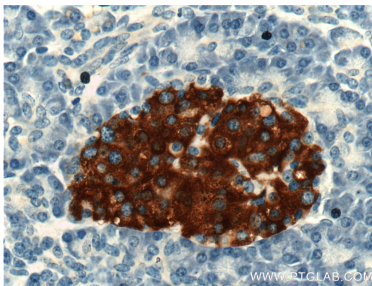
mouse pancreas tissue were subjected to SDS PAGE followed by western blot with 19515-1-AP (PRSS27 antibody) at dilution of 1:300 incubated at room temperature for 1.5 hours.



IP Result of anti-PRSS27 (IP:19515-1-AP, 4ug; Detection:19515-1-AP 1:300) with SW 1990 cells lysate 2960ug.



Immunohistochemical analysis of paraffin-embedded human pancreas tissue slide using 19515-1-AP (PRSS27 Antibody) at dilution of 1:200 (under 10x lens).



Immunohistochemical analysis of paraffin-embedded human pancreas tissue slide using 19515-1-AP (PRSS27 Antibody) at dilution of 1:200 (under 40x lens).