

À des fins de recherche uniquement

Anticorps Polyclonal de lapin anti-CDK1-Specific



Numéro de catalogue: 19532-1-AP

Phare

145 Publications

Informations de base

Numéro de catalogue:

19532-1-AP

Taille:

150ul, Concentration: 550 µg/ml by Nanodrop;

Hôte:

Lapin

Isotype:

IgG

Numéro d'acquisition GenBank:

NM_001786

Identification du gène (NCBI):

983

Nom complet:

cell division cycle 2, G1 to S and G2 to M

MW calculé

34 kDa

MW observés:

34 kDa

Méthode de purification:

Purification par affinité contre l'antigène

Dilutions recommandées:

WB 1:2000-1:10000

IHC 1:100-1:400

IF 1:200-1:800

Applications

Applications testées:

FC, IF, IHC, WB, ELISA

Demandes citées:

IF, IHC, WB

Spécificité de l'espèce:

Humain, rat, souris

Espèces citées:

Humain, porc, rat, souris

Contrôles positifs:

WB : cellules A431, cellules C2C12, cellules C6, cellules COS-7, cellules HEK-293, cellules HeLa, cellules HepG2, cellules Jurkat, cellules MCF-7, cellules Neuro-2a, cellules NIH/3T3

IHC : tissu de cancer du col de l'utérus humain,

IF : cellules HeLa,

Remarque-IHC: il est suggéré de démasquer l'antigène avec un tampon de TE buffer pH 9,0; (*) À défaut, le démasquage de l'antigène peut être effectué avec un tampon citrate pH 6,0.

Informations générales

CDK1, also named as CDC2, belongs to the protein kinase superfamily, CMGC Ser/Thr protein kinase family and CDC2/CDKX subfamily. CDK1 plays a key role in the control of the eukaryotic cell cycle. It is required in higher cells for entry into S-phase and mitosis. CDK1 is a catalytic subunit of the highly conserved protein kinase complex known as M-phase promoting factor (MPF), which is essential for G1/S and G2/M phase transitions of eukaryotic cell cycle. It is a component of the kinase complex that phosphorylates the repetitive C-terminus of RNA polymerase II. Mitotic cyclins stably associate with CDK1 and function as regulatory subunits. CDK1 has 2 isoforms produced by alternative splicing with the molecular mass of 34 kDa and 27 kDa.

Publications notables

Autrice	Pubmed ID	Journal	Application
Xiaoman Chen	30207732	Mol Pharm	WB
Hui-Ting Liu	34667869	Laryngoscope Investig Otolaryngol	WB
Hongxia Li	34558311	Epigenomics	WB

Stockage

Stockage:

Stocker à -20°C. Stable pendant un an après l'expédition.

Tampon de stockage:

PBS avec azoture de sodium à 0,02 % et glycérol à 50 % pH 7,3

L'aliquotage n'est pas nécessaire pour le stockage à -20C

*** Les 20ul contiennent 0,1% de BSA.

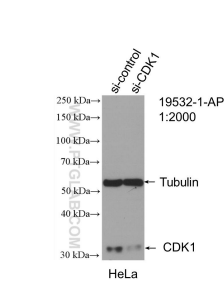
For technical support and original validation data for this product please contact:

T: 1 (888) 4PTGLAB (1-888-478-4522) (toll free in USA), or 1(312) 455-8498 (outside USA)

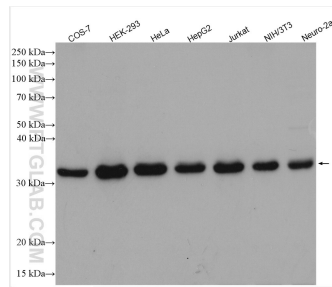
E: proteintech@ptglab.com
W: ptglab.com

This product is exclusively available under Proteintech Group brand and is not available to purchase from any other manufacturer.

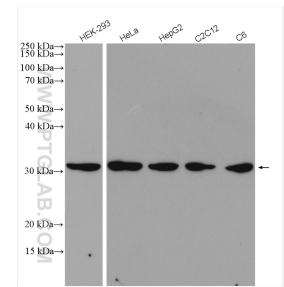
Données de validation sélectionnées



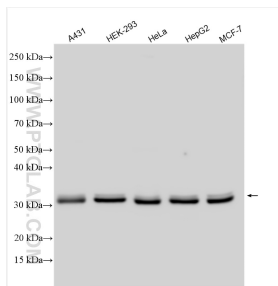
WB result of CDK1-Specific antibody (19532-1-AP; 1:2000; incubated at room temperature for 1.5 hours) with sh-Control and sh-CDK1-Specific transfected HeLa cells.



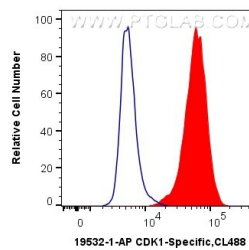
Various lysates were subjected to SDS PAGE followed by western blot with 19532-1-AP (CDK1-Specific antibody) at dilution of 1:3000 incubated at room temperature for 1.5 hours.



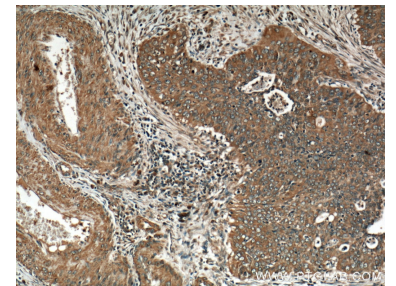
Various lysates were subjected to SDS PAGE followed by western blot with 19532-1-AP (CDK1-Specific antibody) at dilution of 1:1000 incubated at room temperature for 1.5 hours.



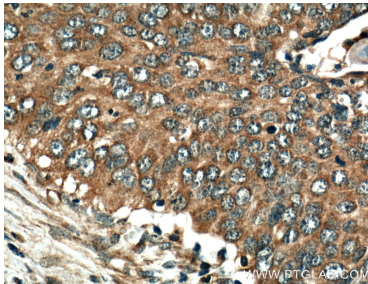
Various lysates were subjected to SDS PAGE followed by western blot with 19532-1-AP (CDK1-Specific antibody) at dilution of 1:5000 incubated at room temperature for 1.5 hours.



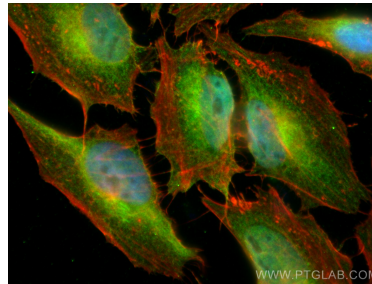
1X10⁶ HeLa cells were intracellularly stained with 0.4 ug Anti-Human CDK1-Specific (19532-1-AP) and CoraLite[®]488-Conjugated AffiniPure Goat Anti-Rabbit IgG(H+L) at dilution 1:1000 (red), or 0.4 ug Control Antibody. Cells were fixed with 4% PFA and permeabilized with Flow Cytometry Perm Buffer (PF00011-C).



Immunohistochemical analysis of paraffin-embedded human cervical cancer tissue slide using 19532-1-AP (CDK1-Specific antibody) at dilution of 1:200 (under 10x lens).



Immunohistochemical analysis of paraffin-embedded human cervical cancer tissue slide using 19532-1-AP (CDK1-Specific antibody) at dilution of 1:200 (under 40x lens).



Immunofluorescent analysis of (4% PFA) fixed HeLa cells using CDK1-Specific antibody (19532-1-AP) at dilution of 1:400 and CoraLite[®]488-Conjugated AffiniPure Goat Anti-Rabbit IgG(H+L), CL594-Phalloidin (red).