

À des fins de recherche uniquement

# Anticorps Polyclonal de lapin anti-Phospho-FANCD2 (Ser330)



Numéro de catalogue: 19543-1-AP

## Informations de base

<b>Numéro de catalogue:</b> 19543-1-AP	<b>Numéro d'acquisition GenBank:</b> NML_033084	<b>Méthode de purification:</b> Purification par affinité contre l'antigène
<b>Taille:</b> 100ul, Concentration: 762 µg/ml by Nanodrop and 762 µg/ml by Bradford method using BSA as the standard;	<b>Identification du gène (NCBI):</b> 2177	<b>Dilutions recommandées:</b> WB 1:500-1:1000 IHC 1:20-1:200
<b>Hôte:</b> Lapin	<b>Nom complet:</b> Fanconi anemia, complementation group D2	
<b>Isotype:</b> IgG	<b>MW calculé:</b> 166 kDa	
	<b>MW observés:</b> 150-155 kDa	

## Applications

### Applications testées:

IHC, WB, ELISA

### Spécificité de l'espèce:

Humain

**Remarque-IHC: il est suggéré de démasquer l'antigène avec un tampon de TE buffer pH 9,0; (\*) À défaut, 'le démasquage de l'antigène peut être effectué avec un tampon citrate pH 6,0.**

### Contrôles positifs:

WB : cellules HL-60,

IHC : tissu testiculaire humain,

## Informations générales

FANCD2, also named as FACD and FACD2, is required for maintenance of chromosomal stability. FANCD2 promotes accurate and efficient pairing of homologs during meiosis. FANCD2 is involved in the repair of DNA double-strand breaks, both by homologous recombination and single-strand annealing. It may participate in S phase and G2 phase checkpoint activation upon DNA damage. It promotes BRCA2/FANCD1 loading onto damaged chromatin. FANCD2 may also be involved in B-cell immunoglobulin isotype switching. Defects in FANCD2 are a cause of Fanconi anemia (FA) which is a genetically heterogeneous, autosomal recessive disorder characterized by progressive pancytopenia, a diverse assortment of congenital malformations, and a predisposition to the development of malignancies. The antibody is to phospho-Ser(330) of FANCD2.

## Stockage

### Stockage:

Stocker à -20°C. Stable pendant un an après l'expédition.

### Tampon de stockage:

PBS avec azotate de sodium à 0,02 % et glycérol à 50 % pH 7,3

L'aliquotage n'est pas nécessaire pour le stockage à -20C

**\*\*\* Les 20ul contiennent 0,1% de BSA.**

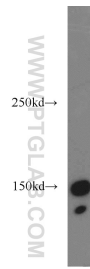
For technical support and original validation data for this product please contact:

T: 1 (888) 4PTGLAB (1-888-478-4522) (toll free in USA), or 1(312) 455-8498 (outside USA)

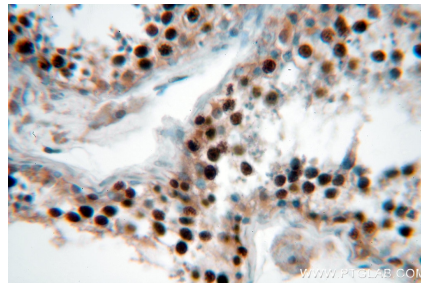
E: [proteintech@ptglab.com](mailto:proteintech@ptglab.com)  
W: [ptglab.com](http://ptglab.com)

**This product is exclusively available under Proteintech Group brand and is not available to purchase from any other manufacturer.**

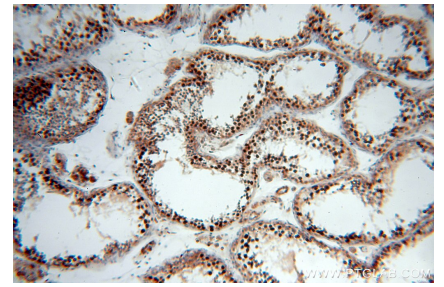
## Données de validation sélectionnées



HL-60 cells were subjected to SDS PAGE followed by western blot with 19543-1-AP (FANCD2-phospho(S330) antibody) at dilution of 1:200 incubated at room temperature for 1.5 hours.



Immunohistochemical analysis of paraffin-embedded human testis using 19543-1-AP (FANCD2-phospho(S330) antibody) at dilution of 1:50 (under 40x lens).



Immunohistochemical analysis of paraffin-embedded human testis using 19543-1-AP (FANCD2-phospho(S330) antibody) at dilution of 1:50 (under 10x lens).