

À des fins de recherche uniquement

Anticorps Polyclonal de lapin anti-Myoferlin



Numéro de catalogue: 19548-1-AP

1 Publications

Informations de base

Numéro de catalogue:
19548-1-AP

Taille:
150ul , Concentration: 450 µg/ml by Nanodrop and 260 µg/ml by Bradford method using BSA as the standard;

Hôte:
Lapin

Isotype:
IgG

Numéro d'acquisition GenBank:
NM_133337

Identification du gène (NCBI):
26509

Nom complet:
myoferlin

MW calculé
235 kDa

MW observés:
235-250 kDa

Méthode de purification:
Purification par affinité contre l'antigène

Dilutions recommandées:
WB 1:500-1:1000
IHC 1:50-1:500
IF 1:10-1:100

Applications

Applications testées:
FC, IF, IHC, WB, ELISA

Demandes citées:
WB

Spécificité de l'espèce:
Humain

Espèces citées:
Humain

Remarque-IHC: il est suggéré de démasquer l'antigène avec un tampon de TE buffer pH 9,0; (*) À défaut, le démasquage de l'antigène peut être effectué avec un tampon citrate pH 6,0.

Contrôles positifs:

WB : cellules HeLa, cellules A549, tissu placentaire humain

IHC : tissu placentaire humain,

IF : cellules HeLa,

Informations générales

MYOF, also named as FER1L3 and KIAA1207, belongs to the ferlin family. MYOF is a calcium/phospholipid-binding protein that plays a role in the plasmalemma repair mechanism of endothelial cells that permits rapid resealing of membranes disrupted by mechanical stress. It is involved in endocytic recycling. MYOF is implicated in VEGF signal transduction by regulating the levels of the receptor KDR. The antibody can recognize all the 8 isoforms of MYOF.

Publications notables

Autrice	Pubmed ID	Journal	Application
Yanqing Zhou	27432471	J Proteomics	WB

Stockage

Stockage:

Stocker à -20°C. Stable pendant un an après l'expédition.

Tampon de stockage:

PBS avec azoture de sodium à 0,02 % et glycérol à 50 % pH 7,3

L'aliquotage n'est pas nécessaire pour le stockage à -20C

*** Les 20ul contiennent 0,1% de BSA.

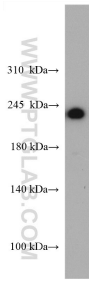
For technical support and original validation data for this product please contact:

T: 1 (888) 4PTGLAB (1-888-478-4522) (toll free in USA), or 1(312) 455-8498 (outside USA)

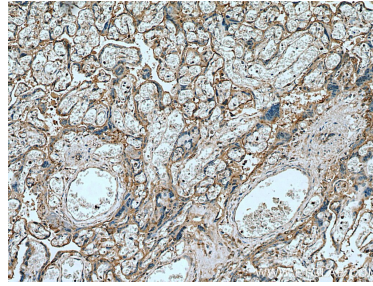
E: proteintech@ptglab.com
W: ptglab.com

This product is exclusively available under Proteintech Group brand and is not available to purchase from any other manufacturer.

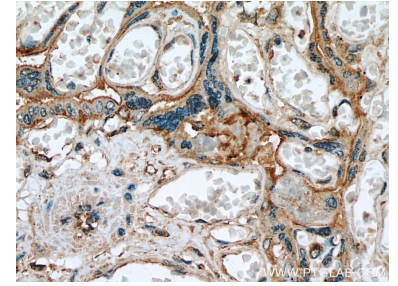
Données de validation sélectionnées



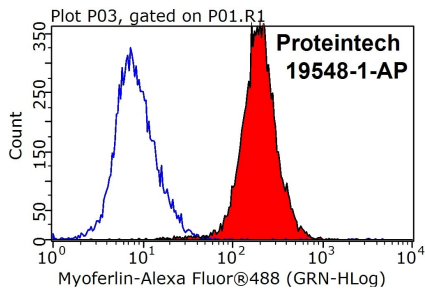
HeLa cells were subjected to SDS PAGE followed by western blot with 19548-1-AP (Myoferlin antibody) at dilution of 1:600 incubated at room temperature for 1.5 hours.



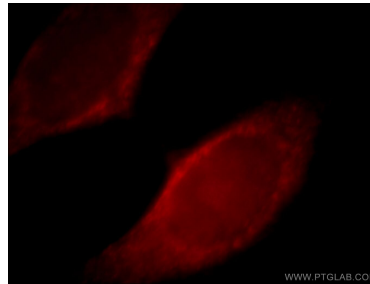
Immunohistochemical analysis of paraffin-embedded human placenta tissue slide using 19548-1-AP (Myoferlin antibody) at dilution of 1:200 (under 10x lens). Heat mediated antigen retrieval with Tris-EDTA buffer (pH 9.0).



Immunohistochemical analysis of paraffin-embedded human placenta tissue slide using 19548-1-AP (Myoferlin antibody) at dilution of 1:200 (under 40x lens). Heat mediated antigen retrieval with Tris-EDTA buffer (pH 9.0).



1X10⁶ HeLa cells were stained with 0.2ug Myoferlin antibody (19548-1-AP, red) and control antibody (blue). Fixed with 90% MeOH blocked with 3% BSA (30 min). Alexa Fluor 488-conjugated AffiniPure Goat Anti-Rabbit IgG(H+L) with dilution 1:1000.



Immunofluorescent analysis of HeLa cells, using MYOF antibody 19548-1-AP at 1:25 dilution and Rhodamine-labeled goat anti-rabbit IgG (red).