

À des fins de recherche uniquement

Anticorps Polyclonal de lapin anti-PROX1



Numéro de catalogue: 19554-1-AP

Informations de base

Numéro de catalogue: 19554-1-AP	Numéro d'acquisition GenBank: NM_002763	Méthode de purification: Purification par affinité contre l'antigène
Taille: 150ul , Concentration: 153 µg/ml by Bradford method using BSA as the standard;	Identification du gène (NCBI): 5629	Dilutions recommandées: WB 1:500-1:1000
Hôte: Lapin	Nom complet: prospero homeobox 1	
Isotype: IgG	MW calculé: 83 kDa	
	MW observés: 83 kDa	

Applications

Applications testées: WB, ELISA	Contrôles positifs: WB : tissu cérébral de souris,
Spécificité de l'espèce: Humain, rat, souris	

Informations générales

PROX1, Prospero homeobox protein 1, belongs to the Prospero homeobox family and contain a Prospero-type homeobox DNA-binding domain. PROX1 plays a fundamental role in early development of CNS and regulates the expression of gene and development of postmitotic, undifferentiated neurons. Also, PROX1 is a required regulator of the development of the Lymphatic system. This antibody is raised against part of C-terminal chain of human PROX1. The calculated molecular weight of PROX1 is 83 kDa, but with post-translational modifications, PROX1 is about 90 kDa.

Stockage

Stockage:
Stocker à -20°C. Stable pendant un an après l'expédition.
Tampon de stockage:
PBS avec azoture de sodium à 0,02 % et glycérol à 50 % pH 7,3
L'aliquotage n'est pas nécessaire pour le stockage à -20C

***** Les 20ul contiennent 0,1% de BSA**

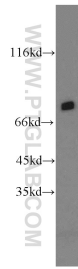
For technical support and original validation data for this product please contact:

T: 1 (888) 4PTGLAB (1-888-478-4522) (toll free in USA), or 1(312) 455-8498 (outside USA)

E: proteintech@ptglab.com
W: ptglab.com

This product is exclusively available under Proteintech Group brand and is not available to purchase from any other manufacturer.

Données de validation sélectionnées



mouse brain tissue were subjected to SDS PAGE followed by western blot with 19554-1-AP (PROX1 antibody) at dilution of 1:500 incubated at room temperature for 1.5 hours.