

À des fins de recherche uniquement

# Anticorps Polyclonal de lapin anti-Histone H1.2



Numéro de catalogue: 19649-1-AP

Phare

23 Publications

## Informations de base

Numéro de catalogue:  
19649-1-AP

Taille:  
150ul, Concentration: 350 µg/ml by Nanodrop and 193 µg/ml by Bradford method using BSA as the standard;

Hôte:  
Lapin

Isotype:  
IgG

Immunogen Catalog Number:  
AG7503

Numéro d'acquisition GenBank:  
BC002649

Identification du gène (NCBI):  
3006

Nom complet:  
histone cluster 1, H1c

MW calculé  
21 kDa

MW observés:  
32-33 kDa

Méthode de purification:  
Purification par affinité contre l'antigène

Dilutions recommandées:  
WB 1:500-1:3000  
IP 0.5-4.0 ug for IP and 1:500-1:1000 for WB  
IHC 1:20-1:200  
IF 1:50-1:500

## Applications

Applications testées:  
IF, IHC, IP, WB, ELISA

Demandes citées:  
IF, IP, WB

Spécificité de l'espèce:  
Humain, rat, souris

Espèces citées:  
Humain, rat, souris

**Remarque-IHC: il est suggéré de démasquer l'antigène avec un tampon de TE buffer pH 9,0; (\*) A défaut, le démasquage de l'antigène peut être effectué avec un tampon citrate pH 6,0.**

Contrôles positifs:

WB : cellules L02, cellules A375, cellules Jurkat, cellules MCF-7, tissu de thymus de souris, tissu testiculaire humain

IP : cellules HeLa,

IHC : tissu de tumeur ovarienne humain,

IF : cellules HeLa,

## Informations générales

Histone H1 regulates chromatin competency through its high affinity binding to linker DNA as a structural component. It acts also as a regulator of individual gene transcription through chromatin remodeling, nucleosome spacing and DNA methylation. The calculated molecular weight of Histone H1.2 is 21 kDa, but modified Histone H1.2 is about 32 kDa. (PMID: 18258596)

## Publications notables

Autrice	Pubmed ID	Journal	Application
Jun Tian	34745423	Oxid Med Cell Longev	WB
Wen-Tong Liu	30340642	J Neuroinflammation	WB
Masanori Itakura	35624109	Nat Commun	WB

## Stockage

Stockage:

Stocker à -20°C. Stable pendant un an après l'expédition.

Tampon de stockage:

PBS avec azoture de sodium à 0,02 % et glycérol à 50 % pH 7,3

L'aliquotage n'est pas nécessaire pour le stockage à -20C

\*\*\* Les 20ul contiennent 0,1% de BSA.

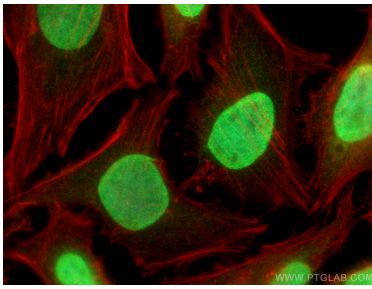
For technical support and original validation data for this product please contact:

T: 1 (888) 4PTGLAB (1-888-478-4522) (toll free in USA), or 1(312) 455-8498 (outside USA)

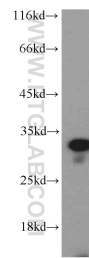
E: proteintech@ptglab.com  
W: ptglab.com

This product is exclusively available under Proteintech Group brand and is not available to purchase from any other manufacturer.

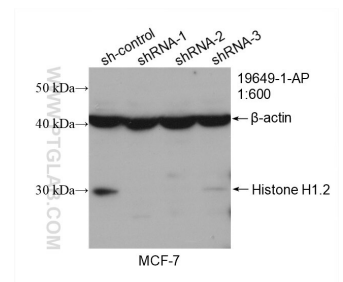
## Données de validation sélectionnées



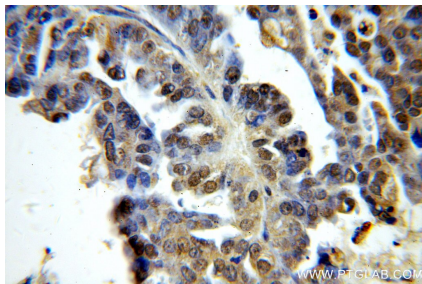
Immunofluorescent analysis of (4% PFA) fixed HeLa cells using Histone H1.2 antibody (19649-1-AP) at dilution of 1:200 and CoraLite®488-Conjugated AffiniPure Goat Anti-Rabbit IgG(H+L), CL594-Phalloidin (red).



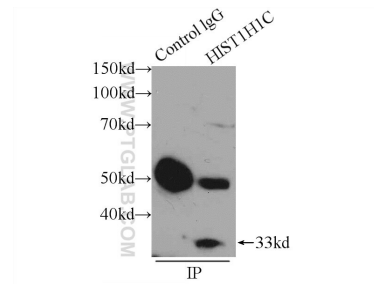
L02 cells were subjected to SDS PAGE followed by western blot with 19649-1-AP (HIST1H1C antibody) at dilution of 1:500 incubated at room temperature for 1.5 hours.



WB result of Histone H1.2 antibody (19649-1-AP; 1:600; incubated at room temperature for 1.5 hours) with sh-Control and sh-Histone H1.2 transfected MCF-7 cells.



Immunohistochemical analysis of paraffin-embedded human ovary tumor using 19649-1-AP (HIST1H1C antibody) at dilution of 1:100 (under 40x lens).



IP Result of anti-Histone H1.2 (IP:19649-1-AP, 3ug; Detection:19649-1-AP 1:500) with HeLa cells lysate 1600ug.