

À des fins de recherche uniquement

# Anticorps Polyclonal de lapin anti-MYH10-Specific



Numéro de catalogue: 19673-1-AP

8 Publications

## Informations de base

Numéro de catalogue:

19673-1-AP

Taille:

150ul, Concentration: 500 µg/ml by Nanodrop;

Hôte:

Lapin

Isotype:

IgG

Numéro d'acquisition GenBank:

NM\_005964

Identification du gène (NCBI):

4628

Nom complet:

myosin, heavy chain 10, non-muscle

MW calculé

231 kDa

MW observés:

229 kDa

Méthode de purification:

Purification par affinité contre l'antigène

Dilutions recommandées:

WB 1:500-1:8000

IP 0.5-4.0 µg for IP and 1:500-1:2000 for WB

IHC 1:50-1:500

IF 1:10-1:100

## Applications

Applications testées:

FC, IF, IHC, IP, WB, ELISA

Demandes citées:

CoIP, ELISA, IF, IHC, WB

Spécificité de l'espèce:

Humain, rat, souris

Espèces citées:

Humain, rat, souris

Contrôles positifs:

WB : cellules HeLa, tissu cérébral de rat, tissu cérébral de souris

IP : tissu cérébral de souris,

IHC : tissu de cervelet humain, tissu cérébral humain

IF : cellules HepG2,

**Remarque-IHC: il est suggéré de démasquer l'antigène avec un tampon de TE buffer pH 9,0; (\*) A défaut, le démasquage de l'antigène peut être effectué avec un tampon citrate pH 6,0.**

## Informations générales

MYH10 is cellular myosin that appears to play a role in cytokinesis, cell shape, and specialized functions such as secretion and capping. The antibody is specific to the C-term of MYH10.

## Publications notables

Autrice	Pubmed ID	Journal	Application
Pengzhen Cheng	35310379	Bioact Mater	WB, CoIP
Yushi Katsuyama	36243587	J Dermatol Sci	WB
Hongyuan Xu	36437609	J Neurochem	WB

## Stockage

Stockage:

Stocker à -20°C. Stable pendant un an après l'expédition.

Tampon de stockage:

PBS avec azoture de sodium à 0,02 % et glycérol à 50 % pH 7,3

L'aliquotage n'est pas nécessaire pour le stockage à -20C

**\*\*\* Les 20ul contiennent 0,1% de BSA.**

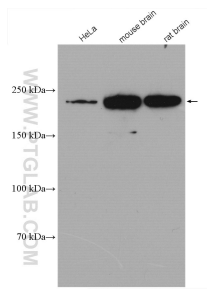
For technical support and original validation data for this product please contact:

T: 1 (888) 4PTGLAB (1-888-478-4522) (toll free in USA), or 1(312) 455-8498 (outside USA)

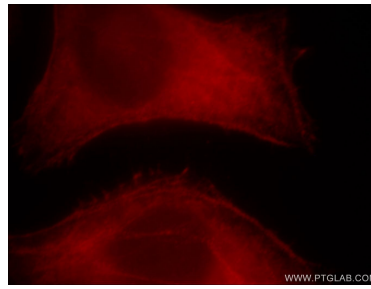
E: proteintech@ptglab.com  
W: ptglab.com

This product is exclusively available under Proteintech Group brand and is not available to purchase from any other manufacturer.

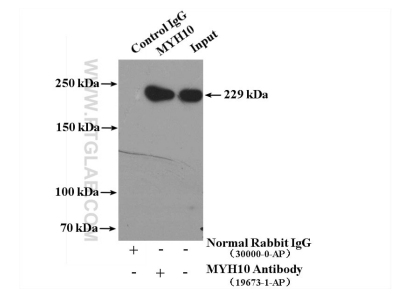
## Données de validation sélectionnées



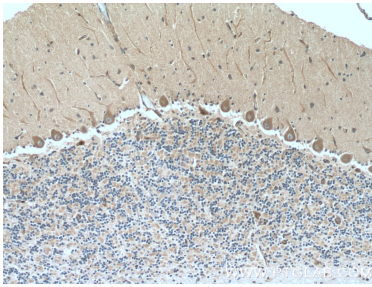
Various lysates were subjected to SDS PAGE followed by western blot with 19673-1-AP (MYH10-Specific antibody) at dilution of 1:1500 incubated at room temperature for 1.5 hours.



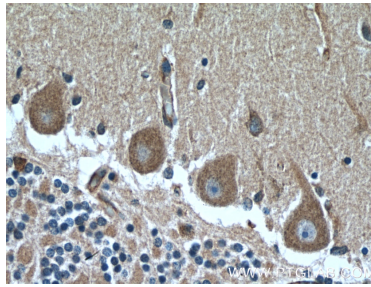
Immunofluorescent analysis of HepG2 cells, using MYH10 antibody 19673-1-AP at 1:25 dilution and Rhodamine-labeled goat anti-rabbit IgG (red).



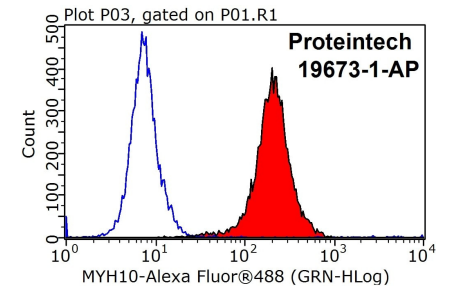
IP Result of anti-MYH10-Specific (IP:19673-1-AP, 4ug; Detection:19673-1-AP 1:1000) with mouse brain tissue lysate 4000ug.



Immunohistochemical analysis of paraffin-embedded human cerebellum tissue slide using 19673-1-AP (MYH10-Specific Antibody) at dilution of 1:200 (under 10x lens).



Immunohistochemical analysis of paraffin-embedded human cerebellum tissue slide using 19673-1-AP (MYH10-Specific Antibody) at dilution of 1:200 (under 40x lens).



1X10<sup>6</sup> HepG2 cells were stained with 0.2ug MYH10-Specific antibody (19673-1-AP, red) and control antibody (blue). Fixed with 90% MeOH blocked with 3% BSA (30 min). Alexa Fluor 488-conjugated AffiniPure Goat Anti-Rabbit IgG(H+L) with dilution 1:1000.