

À des fins de recherche uniquement

# Anticorps Polyclonal de lapin anti-RRM1-Specific



Numéro de catalogue: 19686-1-AP

## Informations de base

Numéro de catalogue:  
19686-1-AP

Taille:  
150ul, Concentration: 260 µg/ml by  
Nanodrop and 247 µg/ml by Bradford  
method using BSA as the standard;

Hôte:  
Lapin

Isotype:  
IgG

Numéro d'acquisition GenBank:  
NM\_001033

Identification du gène (NCBI):  
6240

Nom complet:  
ribonucleotide reductase M1

MW calculé  
90 kDa

MW observés:  
90 kDa

Méthode de purification:  
Purification par affinité contre  
l'antigène

Dilutions recommandées:  
WB 1:200-1:1000  
IF 1:10-1:100

## Applications

Applications testées:  
IF, WB, ELISA

Spécificité de l'espèce:  
Humain, rat, souris

Contrôles positifs:

WB : cellules A549, cellules HEK-293, cellules HeLa

IF : cellules HepG2,

## Informations générales

RRM1, also named as RR1, belongs to the ribonucleoside diphosphate reductase large chain family. RRM1 provides the precursors necessary for DNA synthesis. RRM1 catalyzes the biosynthesis of deoxyribonucleotides from the corresponding ribonucleotides. RRM1 is a key enzyme in DNA synthesis: low level expression of RRM1 is associated with poor survival. RRM1 is a prognostic marker of NSCLC. The antibody is specific to RRM1.

## Stockage

Stockage:

Stocker à -20°C. Stable pendant un an après l'expédition.

Tampon de stockage:

PBS avec azoture de sodium à 0,02 % et glycérol à 50 % pH 7,3

L'aliquotage n'est pas nécessaire pour le stockage à -20C

\*\*\* Les 20ul contiennent 0,1% de BSA.

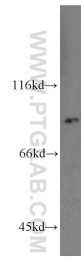
For technical support and original validation data for this product please contact:

T: 1 (888) 4PTGLAB (1-888-478-4522) (toll free  
in USA), or 1(312) 455-8498 (outside USA)

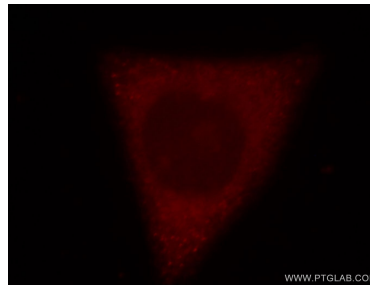
E: [proteintech@ptglab.com](mailto:proteintech@ptglab.com)  
W: [ptglab.com](http://ptglab.com)

This product is exclusively available under Proteintech Group brand and is not available to purchase from any other manufacturer.

## Données de validation sélectionnées



A549 cells were subjected to SDS PAGE followed by western blot with 19686-1-AP (RRM1-Specific antibody) at dilution of 1:100 incubated at room temperature for 1.5 hours.



Immunofluorescent analysis of HepG2 cells, using RRM1 antibody 19686-1-AP at 1:25 dilution and Rhodamine-labeled goat anti-rabbit IgG (red).