

À des fins de recherche uniquement

# Anticorps Polyclonal de lapin anti-Kv1.4-Specific



Numéro de catalogue: 19697-1-AP

3 Publications

## Informations de base

Numéro de catalogue:  
19697-1-AP

Taille:  
150ul, Concentration: 260 µg/ml by Nanodrop and 233 µg/ml by Bradford method using BSA as the standard;

Hôte:  
Lapin

Isotype:  
IgG

Numéro d'acquisition GenBank:  
NM\_002233

Identification du gène (NCBI):  
3739

Nom complet:  
potassium voltage-gated channel, shaker-related subfamily, member 4

MW calculé

73 kDa

MW observés:

73 kDa

Méthode de purification:  
Purification par affinité contre l'antigène

Dilutions recommandées:  
WB 1:500-1:1000

## Applications

Applications testées:  
WB, ELISA

Demandes citées:  
WB

Spécificité de l'espèce:  
Humain, rat, souris

Espèces citées:  
rat

Contrôles positifs:

WB : tissu hépatique de souris,

## Informations générales

KCNA4, also named as KCNA4L, HBK4, HUKII, HK1 and HPCN2, belongs to the potassium channel family and A (Shaker) subfamily. KCNA4 mediates the voltage-dependent potassium ion permeability of excitable membranes. Assuming opened or closed conformations in response to the voltage difference across the membrane, the protein forms a potassium-selective channel through which potassium ions may pass in accordance with their electrochemical gradient. The antibody is specific to KCNA4.

## Publications notables

Autrice	Pubmed ID	Journal	Application
Xue Liu	27322747	Cell Physiol Biochem	WB
Yi Guan	30506890	J Cell Mol Med	WB
Xueting Gao	34409458	J Cell Sci	WB

## Stockage

Stockage:

Stocker à -20°C. Stable pendant un an après l'expédition.

Tampon de stockage:

PBS avec azoture de sodium à 0,02 % et glycérol à 50 % pH 7,3

L'aliquotage n'est pas nécessaire pour le stockage à -20C

\*\*\* Les 20ul contiennent 0,1% de BSA.

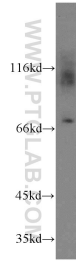
For technical support and original validation data for this product please contact:

T: 1 (888) 4PTGLAB (1-888-478-4522) (toll free in USA), or 1(312) 455-8498 (outside USA)

E: proteintech@ptglab.com  
W: ptglab.com

This product is exclusively available under Proteintech Group brand and is not available to purchase from any other manufacturer.

## Données de validation sélectionnées



mouse liver tissue were subjected to SDS PAGE followed by western blot with 19697-1-AP (Kv1.4-Specific antibody) at dilution of 1:500 incubated at room temperature for 1.5 hours.