

À des fins de recherche uniquement

Anticorps Polyclonal de lapin anti-LRP2-Specific



Numéro de catalogue: 19700-1-AP

Phare

12 Publications

Informations de base

Numéro de catalogue:
19700-1-AP

Taille:
150ul, Concentration: 900 µg/ml by
Nanodrop;

Hôte:
Lapin

Isotype:
IgG

Numéro d'acquisition GenBank:
NM_004525

Identification du gène (NCBI):
4036

Nom complet:
low density lipoprotein-related
protein 2

MW calculé
522 kDa

MW observés:
280 kDa

Méthode de purification:
Purification par affinité contre
l'antigène

Dilutions recommandées:
WB 1:500-1:3000
IHC 1:4000-1:16000

Applications

Applications testées:
FC, IHC, WB, ELISA

Demandes citées:
IF, IHC, WB

Spécificité de l'espèce:
Humain

Espèces citées:
Humain, rat, souris

Contrôles positifs:

WB : cellules HeLa, cellules HEK-293, tissu cérébral
humain, tissu placentaire humain

IHC : tissu rénal humain,

**Remarque-IHC: il est suggéré de démasquer
l'antigène avec un tampon de TE buffer pH
9,0; (*) À défaut, le démasquage de
l'antigène peut être effectué avec un
tampon citrate pH 6,0.**

Informations générales

LRP2, also named as gp330 and Megalin, belongs to the LDLR family. It acts together with cubilin to mediate HDL endocytosis. LRP2 may participate in regulation of parathyroid-hormone and para-thyroid-hormone-related protein release. Defects in LRP2 are the cause of Donnai-Barrow syndrome (DBS). This antibody is specific to LRP2 and detects endogenous LRP2 with an apparent molecular weight 280 kDa, which is smaller than the predicted molecular weight (522 kDa) and probably represent a proteolytic fragment of the large glycoprotein (PMID: 16638803; 8483924).

Publications notables

Autrice	Pubmed ID	Journal	Application
Yushi Uchida	34541900	Am J Physiol Renal Physiol	WB
Hitomi Otomo	33069809	Metabolism	IHC,IF
Junqiu He	32464235	Int J Pharm	IHC

Stockage

Stockage:

Stocker à -20°C. Stable pendant un an après l'expédition.

Tampon de stockage:

PBS avec azoture de sodium à 0,02 % et glycérol à 50 % pH 7,3

L'aliquotage n'est pas nécessaire pour le stockage à -20C

*** Les 20ul contiennent 0,1% de BSA.

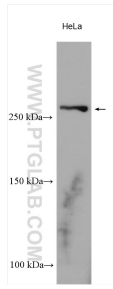
For technical support and original validation data for this product please contact:

T: 1 (888) 4PTGLAB (1-888-478-4522) (toll free
in USA), or 1(312) 455-8498 (outside USA)

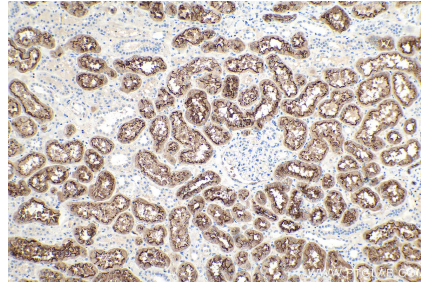
E: proteintech@ptglab.com
W: ptglab.com

This product is exclusively available under Proteintech Group brand and is not available to purchase from any other manufacturer.

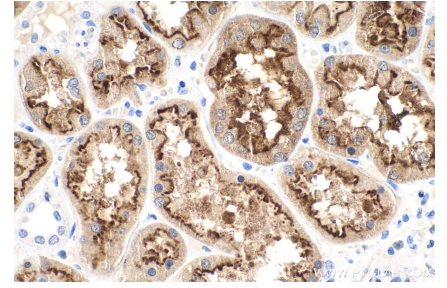
Données de validation sélectionnées



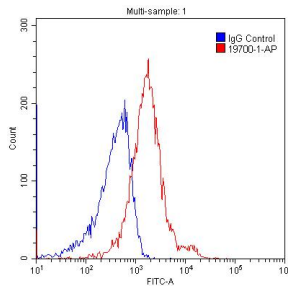
HeLa cells were subjected to SDS PAGE followed by western blot with 19700-1-AP (LRP2-Specific antibody) at dilution of 1:1500 incubated at room temperature for 1.5 hours.



Immunohistochemical analysis of paraffin-embedded human kidney tissue slide using 19700-1-AP (LRP2-Specific antibody) at dilution of 1:8000 (under 10x lens). Heat mediated antigen retrieval with Tris-EDTA buffer (pH 9.0).



Immunohistochemical analysis of paraffin-embedded human kidney tissue slide using 19700-1-AP (LRP2-Specific antibody) at dilution of 1:8000 (under 40x lens). Heat mediated antigen retrieval with Tris-EDTA buffer (pH 9.0).



1×10^6 HEK-293 cells were stained with 0.2ug LRP2-Specific antibody (19700-1-AP, red) and control antibody (blue). Fixed with 4% PFA blocked with 3% BSA (30 min). Alexa Fluor 488-conjugated AffiniPure Goat Anti-Rabbit IgG(H+L) with dilution 1:1500.