

À des fins de recherche uniquement

# Anticorps Polyclonal de lapin anti-TMF1-Specific



Numéro de catalogue: 19728-1-AP

2 Publications

## Informations de base

Numéro de catalogue:

19728-1-AP

Taille:

150ul, Concentration: 600 µg/ml by Nanodrop and 350 µg/ml by Bradford method using BSA as the standard;

Hôte:

Lapin

Isotype:

IgG

Numéro d'acquisition GenBank:

NM\_007114

Identification du gène (NCBI):

7110

Nom complet:

TATA element modulatory factor 1

MW calculé

123 kDa

MW observés:

150-160 kDa

Méthode de purification:

Purification par affinité contre l'antigène

Dilutions recommandées:

WB 1:500-1:2000

IP 0.5-4.0 ug for IP and 1:200-1:1000 for WB

IHC 1:50-1:500

IF 1:50-1:500

## Applications

Applications testées:

IF, IHC, IP, WB, ELISA

Demandes citées:

IF, WB

Spécificité de l'espèce:

Humain

Espèces citées:

Humain

Contrôles positifs:

WB : cellules BxPC-3, cellules HeLa, cellules HepG2, cellules LO2

IP : cellules HepG2,

IHC : tissu de cancer du col de l'utérus humain, tissu testiculaire humain

IF : cellules HepG2,

**Remarque-IHC: il est suggéré de démasquer l'antigène avec un tampon de TE buffer pH 9,0; (\*) À défaut, 'le démasquage de l'antigène peut être 'effectué avec un tampon citrate pH 6,0.**

## Informations générales

TMF1, also named as ARA160, is a potential coactivator of the androgen receptor. TMF1 mediates STAT3 degradation. TMF1 plays critical roles in two RAB6-dependent retrograde transport processes: one from endosomes to the Golgi and the other from the Golgi to the ER. TMF1 binds the HIV-1 TATA element and inhibits transcriptional activation by the TATA-binding protein (TBP). The antibody is specific to TMF1. TMF1 can be detected as 150-160 kDa after posttranslational modification.

## Publications notables

Autrice	Pubmed ID	Journal	Application
Jordy J Hsiao	27365400	J Biol Chem	WB
Julian Nüchel	34245671	Mol Cell	WB,IF

## Stockage

Stockage:

Stocker à -20°C. Stable pendant un an après l'expédition.

Tampon de stockage:

PBS avec azoture de sodium à 0,02 % et glycérol à 50 % pH 7,3

L'aliquotage n'est pas nécessaire pour le stockage à -20C

\*\*\* Les 20ul contiennent 0,1% de BSA.

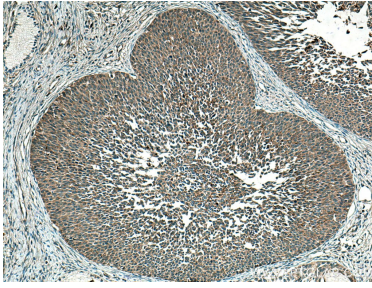
For technical support and original validation data for this product please contact:

T: 1 (888) 4PTGLAB (1-888-478-4522) (toll free in USA), or 1(312) 455-8498 (outside USA)

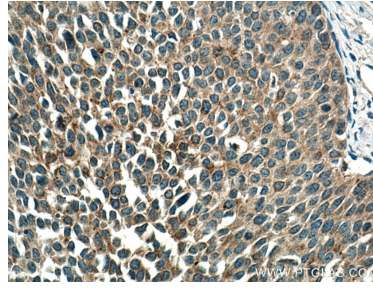
E: [proteintech@ptglab.com](mailto:proteintech@ptglab.com)  
W: [ptglab.com](http://ptglab.com)

This product is exclusively available under Proteintech Group brand and is not available to purchase from any other manufacturer.

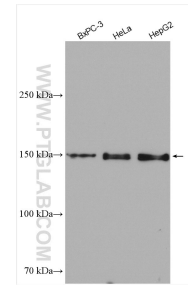
## Données de validation sélectionnées



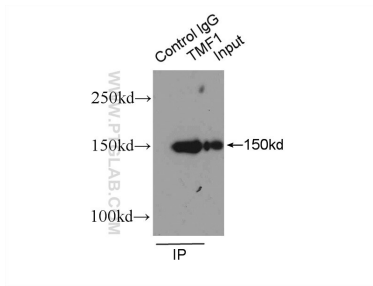
Immunohistochemical analysis of paraffin-embedded human cervical cancer tissue slide using 19728-1-AP (TMF 1-Specific antibody) at dilution of 1:200 (under 10x lens). Heat mediated antigen retrieval with Tris-EDTA buffer (pH 9.0).



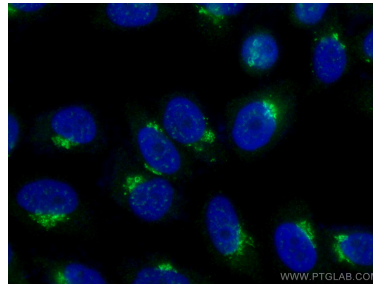
Immunohistochemical analysis of paraffin-embedded human cervical cancer tissue slide using 19728-1-AP (TMF 1-Specific antibody) at dilution of 1:200 (under 40x lens). Heat mediated antigen retrieval with Tris-EDTA buffer (pH 9.0).



Various lysates were subjected to SDS PAGE followed by western blot with 19728-1-AP (TMF 1-Specific antibody) at dilution of 1:1000 incubated at room temperature for 1.5 hours.



IP Result of anti-TMF 1-Specific (IP:19728-1-AP, 4ug; Detection:19728-1-AP 1:300) with HepG2 cells lysate 3600ug.



Immunofluorescent analysis of (-20°C Ethanol) fixed HepG2 cells using 19728-1-AP (TMF 1-Specific antibody) at dilution of 1:100 and CoraLite488-Conjugated AffiniPure Goat Anti-Rabbit IgG(H+L).