

À des fins de recherche uniquement

Anticorps Polyclonal de lapin anti-SLK



Numéro de catalogue: 19743-1-AP

Informations de base

Numéro de catalogue: 19743-1-AP	Numéro d'acquisition GenBank: NM_014720	Méthode de purification: Purification par affinité contre l'antigène
Taille: 150ul , Concentration: 1200 µg/ml by Nanodrop;	Identification du gène (NCBI): 9748	Dilutions recommandées: WB 1:500-1:3000 IF 1:50-1:500
Hôte: Lapin	Nom complet: STE20-like kinase (yeast)	
Isotype: IgG	MW calculé: 143 kDa	
	MW observés: 143-160 kDa, 210-220 kDa	

Applications

Applications testées: IF, WB, ELISA	Contrôles positifs:
Spécificité de l'espèce: Humain, souris	WB : cellules HEK-293, cellules HeLa, cellules MCF-7, cellules THP-1, tissu cérébral humain, tissu hépatique de souris
	IF : cellules HepG2,

Informations générales

SLK, also named as KIAA0204 and STK2, belongs to the protein kinase superfamily, STE Ser/Thr protein kinase family and STE20 subfamily. SLK plays an important role in cell proliferation and cytoskeletal remodeling. In fibroblasts, SLK has been shown to respond to FAK/Src signaling and regulate focal adhesion turnover through Paxillin phosphorylation. Full-length SLK (~220 kDa) has also been shown to be essential for embryonic development. In myoblasts, the overexpression of a dominant negative SLK is sufficient to block myoblast fusion. (PMID: 28153048, PMID: 25882817, PMID: 23815977)

Stockage

Stockage:
Stocker à -20°C. Stable pendant un an après l'expédition.
Tampon de stockage:
PBS avec azoture de sodium à 0,02 % et glycérol à 50 % pH 7,3
L'aliquotage n'est pas nécessaire pour le stockage à -20C

*** Les 20ul contiennent 0,1% de BSA.

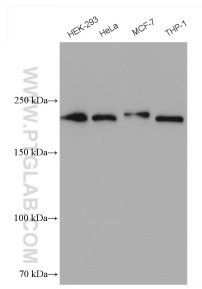
For technical support and original validation data for this product please contact:

T: 1 (888) 4PTGLAB (1-888-478-4522) (toll free in USA), or 1(312) 455-8498 (outside USA)

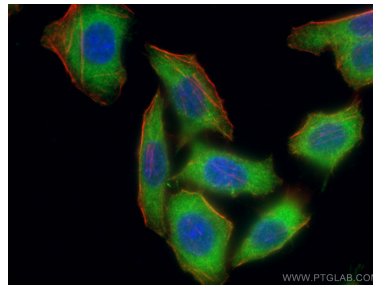
E: proteintech@ptglab.com
W: ptglab.com

This product is exclusively available under Proteintech Group brand and is not available to purchase from any other manufacturer.

Données de validation sélectionnées



Various lysates were subjected to SDS PAGE followed by western blot with 19743-1-AP (SLK antibody) at dilution of 1:1500 incubated at room temperature for 1.5 hours.



Immunofluorescent analysis of (-20°C Ethanol) fixed HepG2 cells using 19743-1-AP (SLK antibody), at dilution of 1:200 and CoraLite® 488-Conjugated AffiniPure Goat Anti-Rabbit IgG(H+L).