

À des fins de recherche uniquement

Anticorps Polyclonal de lapin anti-GPR50



Numéro de catalogue: 19762-1-AP

Phare

5 Publications

Informations de base

Numéro de catalogue:

19762-1-AP

Numéro d'acquisition GenBank:

NM_004224

Méthode de purification:

Purification par affinité contre l'antigène

Taille:

150ul, Concentration: 1000 µg/ml by Nanodrop and 333 µg/ml by Bradford method using BSA as the standard;

Identification du gène (NCBI):

9248

Dilutions recommandées:

IHC 1:20-1:200

IF 1:50-1:500

Nom complet:

G protein-coupled receptor 50

Hôte:

Lapin

MW calculé

67 kDa

Isotype:

IgG

Applications

Applications testées:

FC, IF, IHC, ELISA

Contrôles positifs:

IHC : tissu cérébral de souris,

IF : tissu cérébral de souris, cellules SH-SY5Y

Demandes citées:

IF, IP, WB

Spécificité de l'espèce:

Humain, souris

Espèces citées:

Humain, souris

Remarque-IHC: il est suggéré de démasquer l'antigène avec un tampon de TE buffer pH 9.0; (*) À défaut, 'le démasquage de l'antigène peut être effectué avec un tampon citrate pH 6,0.

Informations générales

GPR50, also known as Melatonin-related receptor or H9, is a member of the G-protein coupled receptor 1 family. It is closely related to the G protein-coupled melatonin receptor family and has been demonstrated as the mammalian ortholog of Mel1c receptor (PMID: 8647286; 18400093). GPR50 does not bind melatonin. It is able to heterodimerize with both the MT1 (Mel1a) and MT2 (Mel1b) melatonin receptor subtypes. While GPR50 has no effect on MT2 function, GPR50 prevented MT1 from both binding melatonin and coupling to G proteins. GPR50 is involved in neuroendocrine function and plays a role in the regulation of energy metabolism (PMID: 8647286; 17957037).

Publications notables

Autrice	Pubmed ID	Journal	Application
Danli Lu	36181629	Transl Stroke Res	WB,IP
Boris Simonetti	31576058	Nat Cell Biol	WB
Zhenyu Yao	36333974	FEBS Open Bio	WB

Stockage

Stockage:

Stocker à -20°C. Stable pendant un an après l'expédition.

Tampon de stockage:

PBS avec azoture de sodium à 0,02 % et glycérol à 50 % pH 7,3

L'aliquotage n'est pas nécessaire pour le stockage à -20C

*** Les 20ul contiennent 0,1% de BSA.

For technical support and original validation data for this product please contact:

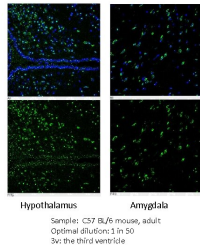
T: 1 (888) 4PTGLAB (1-888-478-4522) (toll free in USA), or 1(312) 455-8498 (outside USA)

E: proteintech@ptglab.com
W: ptglab.com

This product is exclusively available under Proteintech Group brand and is not available to purchase from any other manufacturer.

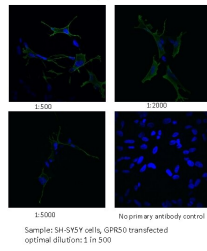
Données de validation sélectionnées

Immunohistochemistry

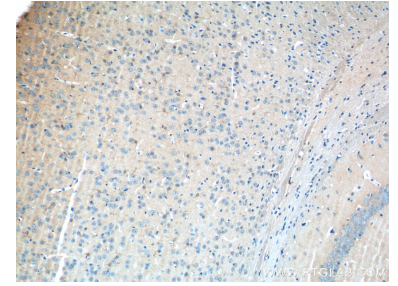


IF result of anti-GPR50 (19762-1-AP, 1:50) with mouse brain tissue slide by Dr. Qian Li, University of Edinburgh.

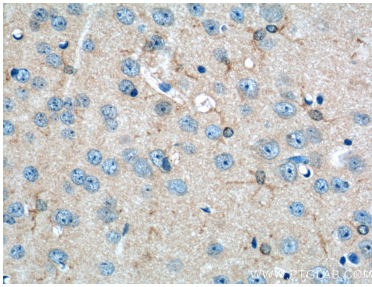
Immunocytochemistry



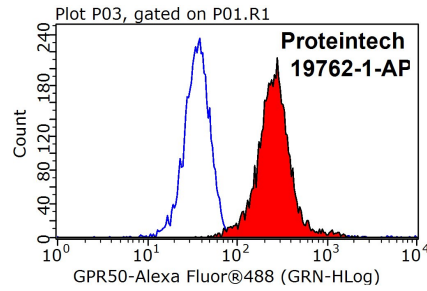
IF result of anti-GPR50 (19762-1-AP, 1:500) with SH-SY5Y cells transfected with GPR50 by Dr. Qian Li, University of Edinburgh.



Immunohistochemical analysis of paraffin-embedded mouse brain tissue slide using 19762-1-AP (GPR50 Antibody) at dilution of 1:50 (under 10x lens).



Immunohistochemical analysis of paraffin-embedded mouse brain tissue slide using 19762-1-AP (GPR50 Antibody) at dilution of 1:50 (under 40x lens).



1x10⁶ K-562 cells were stained with 0.2ug GPR50 antibody (19762-1-AP, red) and control antibody (blue). Fixed with 90% MeOH blocked with 3% BSA (30 min). Alexa Fluor 488-conjugated AffiniPure Goat Anti-Rabbit IgG(H+L) with dilution 1:1000.