

À des fins de recherche uniquement

# Anticorps Polyclonal de lapin anti-ADRA1A-Specific



Numéro de catalogue: 19777-1-AP

Phare

4 Publications

## Informations de base

Numéro de catalogue:  
19777-1-AP

Taille:  
150ul, Concentration: 260 µg/ml by Nanodrop and 207 µg/ml by Bradford method using BSA as the standard;

Hôte:  
Lapin

Isotype:  
IgG

Numéro d'acquisition GenBank:  
NM\_000680

Identification du gène (NCBI):  
148

Nom complet:  
adrenergic, alpha-1A-, receptor

MW calculé  
51 kDa

MW observés:  
52 kDa

Méthode de purification:  
Purification par affinité contre l'antigène

Dilutions recommandées:  
WB 1:500-1:2000

## Applications

Applications testées:  
FC, WB, ELISA

Demandes citées:  
IF, IHC, WB

Spécificité de l'espèce:  
Humain, rat, souris

Espèces citées:  
Humain, rat, souris

Contrôles positifs:

WB : tissu cardiaque de souris, cellules HeLa, tissu cérébral de souris

## Informations générales

ADRA1A, also named as ADRA1C, belongs to the G-protein coupled receptor 1 family. ADRA1A mediates its action by association with G proteins that activate a phosphatidylinositol-calcium second messenger system. Its effect is mediated by G(q) and G(11) proteins. The antibody is specific to ADRA1A.

## Publications notables

Autrice	Pubmed ID	Journal	Application
Miles Frost	32971843	Pharmaceuticals (Basel)	IHC, IF
Jun-Jie Wang	26545627	Vascul Pharmacol	WB
Miaomiao Zhu	35252820	iScience	WB

## Stockage

Stockage:

Stocker à -20°C. Stable pendant un an après l'expédition.

Tampon de stockage:

PBS avec azoture de sodium à 0,02 % et glycérol à 50 % pH 7,3

L'aliquotage n'est pas nécessaire pour le stockage à -20C

\*\*\* Les 20ul contiennent 0,1% de BSA.

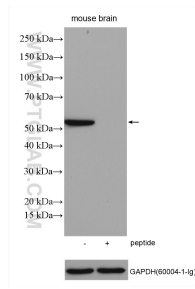
For technical support and original validation data for this product please contact:

T: 1 (888) 4PTGLAB (1-888-478-4522) (toll free in USA), or 1(312) 455-8498 (outside USA)

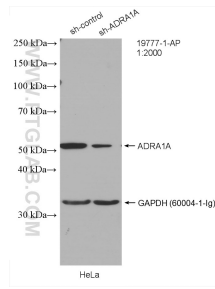
E: [proteintech@ptglab.com](mailto:proteintech@ptglab.com)  
W: [ptglab.com](http://ptglab.com)

This product is exclusively available under Proteintech Group brand and is not available to purchase from any other manufacturer.

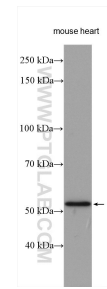
## Données de validation sélectionnées



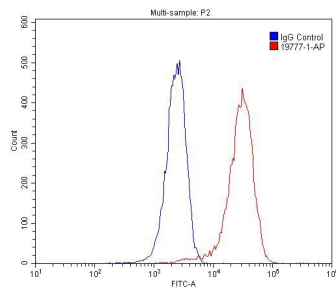
mouse brain tissue lysates were subjected to SDS PAGE followed by western blot with 19777-1-AP (ADRA1A-Specific antibody) at dilution of 1:1000 incubated at room temperature for 1.5 hours without or with blocking peptide (1.4 ug peptide was used to block the binding of 1.0 ug antibody).



WB result of ADRA1A-Specific antibody (19777-1-AP; 1:2000; incubated at room temperature for 1.5 hours) with sh-Control and sh-ADRA1A-Specific transfected HeLa cells.



mouse heart tissue were subjected to SDS PAGE followed by western blot with 19777-1-AP (ADRA1A-Specific antibody) at dilution of 1:1000 incubated at room temperature for 1.5 hours.



1X10<sup>6</sup> HepG2 cells were stained with 0.2ug ADRA1A-Specific antibody (19777-1-AP, red) and control antibody (blue). Fixed with 4% PFA blocked with 3% BSA (30 min). Alexa Fluor 488-conjugated AffiniPure Goat Anti-Rabbit IgG(H+L) with dilution 1:1500.