

À des fins de recherche uniquement

# Anticorps Polyclonal de lapin anti-AMPD1-Specific



Numéro de catalogue: 19780-1-AP

Phare

3 Publications

## Informations de base

Numéro de catalogue:  
19780-1-AP

Taille:  
150ul, Concentration: 350 µg/ml by Nanodrop and 207 µg/ml by Bradford method using BSA as the standard;

Hôte:  
Lapin

Isotype:  
IgG

Numéro d'acquisition GenBank:  
NM\_000036

Identification du gène (NCBI):  
270

Nom complet:  
adenosine monophosphate deaminase 1 (isoform M)

MW calculé

87 kDa

MW observés:

75-83 kDa

Méthode de purification:  
Purification par affinité contre l'antigène

Dilutions recommandées:  
WB 1:500-1:3000  
IP 0.5-4.0 ug for IP and 1:200-1:1000 for WB  
IHC 1:50-1:500

## Applications

Applications testées:  
IHC, IP, WB, ELISA

Demandes citées:  
IHC, WB

Spécificité de l'espèce:  
Humain, rat, souris

Espèces citées:  
Humain, souris

**Remarque-IHC: il est suggéré de démasquer l'antigène avec un tampon de TE buffer pH 9,0; (\*) À défaut, le démasquage de l'antigène peut être effectué avec un tampon citrate pH 6,0.**

Contrôles positifs:

WB : tissu de muscle squelettique de souris,

IP : tissu de muscle squelettique de souris,

IHC : tissu de muscle squelettique de souris,

## Informations générales

AMPD1, also named as MAD and MADA, belongs to the adenosine and AMP deaminases family. AMP deaminase plays a critical role in energy metabolism. It catalyzes the reaction: AMP + H<sub>2</sub>O = IMP + NH<sub>3</sub>. Defects in AMPD1 are the cause of adenosine monophosphate deaminase deficiency muscle type (AMPDDM) which is a metabolic disorder resulting in exercise-related myopathy. The antibody is specific to AMPD1.

## Publications notables

Autrice	Pubmed ID	Journal	Application
Long Wang	34900696	Front Oncol	IHC
Zhenkang Chen	36598990	Sci Adv	WB
Ana Andres-Hernando	36994079	iScience	WB

## Stockage

Stockage:

Stocker à -20°C. Stable pendant un an après l'expédition.

Tampon de stockage:

PBS avec azoture de sodium à 0,02 % et glycérol à 50 % pH 7,3

L'aliquotage n'est pas nécessaire pour le stockage à -20C

\*\*\* Les 20ul contiennent 0,1% de BSA.

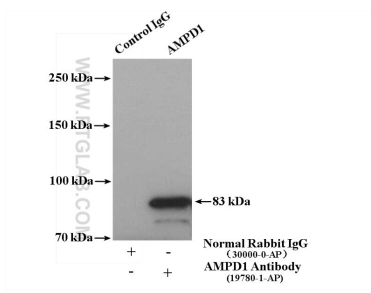
For technical support and original validation data for this product please contact:

T: 1 (888) 4PTGLAB (1-888-478-4522) (toll free in USA), or 1(312) 455-8498 (outside USA)

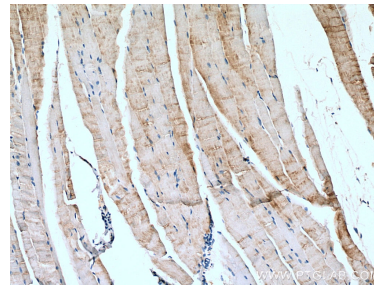
E: proteintech@ptglab.com  
W: ptglab.com

This product is exclusively available under Proteintech Group brand and is not available to purchase from any other manufacturer.

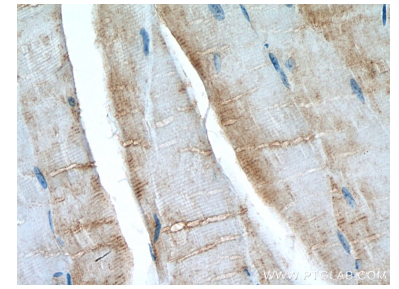
## Données de validation sélectionnées



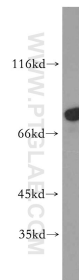
mouse skeletal muscle tissue were subjected to SDS PAGE followed by western blot with 19780-1-AP (AMPD1-Specific antibody) at dilution of 1:300.



Immunohistochemical analysis of paraffin-embedded mouse skeletal muscle tissue slide using 19780-1-AP (AMPD1-Specific antibody) at dilution of 1:200 (under 10x lens). Heat mediated antigen retrieval with Tris-EDTA buffer (pH 9.0).



Immunohistochemical analysis of paraffin-embedded mouse skeletal muscle tissue slide using 19780-1-AP (AMPD1-Specific antibody) at dilution of 1:200 (under 40x lens). Heat mediated antigen retrieval with Tris-EDTA buffer (pH 9.0).



mouse skeletal muscle tissue were subjected to SDS PAGE followed by western blot with 19780-1-AP (AMPD1-Specific antibody) at dilution of 1:300 incubated at room temperature for 1.5 hours.