

À des fins de recherche uniquement

# Anticorps Polyclonal de lapin anti-Collagen Type VII



Numéro de catalogue: 19799-1-AP

## Informations de base

<b>Numéro de catalogue:</b> 19799-1-AP	<b>Numéro d'acquisition GenBank:</b> NM_000094	<b>Méthode de purification:</b> Purification par affinité contre l'antigène
<b>Taille:</b> 150ul , Concentration: 400 µg/ml by Nanodrop and 300 µg/ml by Bradford method using BSA as the standard;	<b>Identification du gène (NCBI):</b> 1294	<b>Dilutions recommandées:</b> WB 1:500-1:1000
<b>Hôte:</b> Lapin	<b>Nom complet:</b> collagen, type VII, alpha 1	
<b>Isotype:</b> IgG	<b>MW calculé:</b> 295 kDa	
	<b>MW observés:</b> 290 kDa	

## Applications

<b>Applications testées:</b> WB, ELISA	<b>Contrôles positifs:</b> WB : cellules HeLa,
<b>Spécificité de l'espèce:</b> Humain	

## Informations générales

COL7A1, also named as LC collagen, is a stratified squamous epithelial basement membrane protein that forms anchoring fibrils which may contribute to epithelial basement membrane organization and adherence by interacting with extracellular matrix (ECM) proteins such as type IV collagen. Defects in COL7A1 are the cause of epidermolysis bullosa dystrophica (DEB). Defects in COL7A1 are the cause of epidermolysis bullosa dystrophica Pasini type (P-DEB) which also known as albopapuloid dominant dystrophic epidermolysis bullosa. Defects in COL7A1 are the cause of epidermolysis bullosa dystrophica Hallopeau-Siemens type (HS-DEB). Defects in COL7A1 are the cause of transient bullous dermolysis of the newborn (TBDN). Defects in COL7A1 are the cause of epidermolysis bullosa dystrophica pretibial type (PR-DEB). Defects in COL7A1 are the cause of epidermolysis bullosa dystrophica Bart type (B-DEB). Defects in COL7A1 are the cause of epidermolysis bullosa pruriginosa (EBP). Defects in COL7A1 are the cause of isolated toenail dystrophy without skin fragility. Defects in COL7A1 are the cause of epidermolysis bullosa dystrophica with subcorneal cleavage (EBDSC) which also known as epidermolysis bullosa simplex superficialis (EBSS). This antibody is specific to COL7A1.

## Stockage

**Stockage:**  
Stocker à -20°C. Stable pendant un an après l'expédition.  
**Tampon de stockage:**  
PBS avec azoture de sodium à 0,02 % et glycérol à 50 % pH 7,3  
L'aliquotage n'est pas nécessaire pour le stockage à -20C

\*\*\* Les 20ul contiennent 0,1% de BSA.

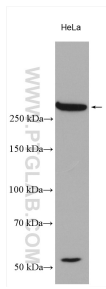
For technical support and original validation data for this product please contact:

T: 1 (888) 4PTGLAB (1-888-478-4522) (toll free in USA), or 1(312) 455-8498 (outside USA)

E: [proteintech@ptglab.com](mailto:proteintech@ptglab.com)  
W: [ptglab.com](http://ptglab.com)

This product is exclusively available under Proteintech Group brand and is not available to purchase from any other manufacturer.

## Données de validation sélectionnées



HeLa cells were subjected to SDS PAGE followed by western blot with 19799-1-AP (Collagen Type VII antibody) at dilution of 1:600 incubated at room temperature for 1.5 hours.