

À des fins de recherche uniquement

Anticorps Polyclonal de lapin anti-RtcB-Specific



Numéro de catalogue: 19809-1-AP

Phare

5 Publications

Informations de base

Numéro de catalogue: 19809-1-AP	Numéro d'acquisition GenBank: BC000151	Méthode de purification: Purification par affinité contre l'antigène
Taille: 150ul, Concentration: 800 µg/ml by Nanodrop;	Identification du gène (NCBI): 51493	Dilutions recommandées: WB 1:1000-1:6000
Hôte: Lapin	Nom complet: chromosome 22 open reading frame 28	IP 0.5-4.0 ug for IP and 1:1000-1:8000 for WB
Isotype: IgG	MW calculé 55 kDa	IF 1:10-1:100
Immunogen Catalog Number: AG13836	MW observés: 55 kDa	

Applications

Applications testées:

IF, IP, WB, ELISA

Demandes citées:

IP, WB

Spécificité de l'espèce:

Humain, souris

Espèces citées:

Humain, porc

Contrôles positifs:

WB : cellules HeLa, cellules Jurkat, tissu cérébral de souris

IP : cellules HeLa,

IF : cellules HeLa,

Informations générales

RTCB (also known as HSPC117, C22orf28, FAAP and D10Wsu52e) is an essential subunit of a tRNA ligase complex that is involved in RNA repair and stress-induced splicing. As a multifunctional protein, RTCB is also a cell adhesion protein and is important in embryo and placenta development. Recently RTCB has been identified as UPR RNA ligase catalyzing unconventional XBP1 mRNA splicing. This antibody specifically recognizes endogenous RTCB protein. (25087875)

Publications notables

Autrice	Pubmed ID	Journal	Application
Yichen Xu	34559986	Cell	WB
Irem Unlu	30355738	J Biol Chem	WB
Carmen Aguilar	34099666	Nat Commun	WB

Stockage

Stockage:

Stocker à -20°C. Stable pendant un an après l'expédition.

Tampon de stockage:

PBS avec azoture de sodium à 0,02 % et glycérol à 50 % pH 7,3

L'aliquotage n'est pas nécessaire pour le stockage à -20C

*** Les 20ul contiennent 0,1% de BSA.

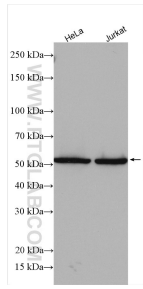
For technical support and original validation data for this product please contact:

T: 1 (888) 4PTGLAB (1-888-478-4522) (toll free in USA), or 1(312) 455-8498 (outside USA)

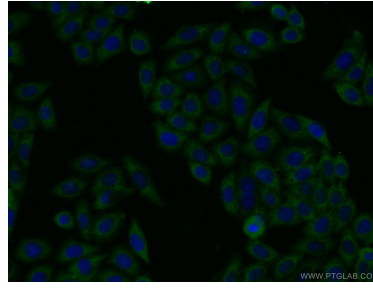
E: proteintech@ptglab.com
W: ptglab.com

This product is exclusively available under Proteintech Group brand and is not available to purchase from any other manufacturer.

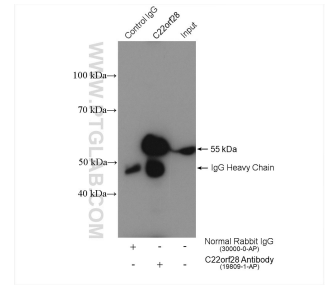
Données de validation sélectionnées



Various lysates were subjected to SDS PAGE followed by western blot with 19809-1-AP (RtcB-Specific antibody) at dilution of 1:3000 incubated at room temperature for 1.5 hours.



Immunofluorescent analysis of HeLa cells using 19809-1-AP (RtcB-Specific antibody) at dilution of 1:25 and Alexa Fluor 488-conjugated AffiniPure Goat Anti-Rabbit IgG(H+L).



IP result of anti-RtcB-Specific(IP:19809-1-AP, 4ug; Detection:19809-1-AP 1:4000) with HeLa cells lysate 1800 ug.