

À des fins de recherche uniquement

Anticorps Polyclonal de lapin anti-ATG16L1



Numéro de catalogue: 19812-1-AP

15 Publications

Informations de base

Numéro de catalogue:

19812-1-AP

Taille:

150ul, Concentration: 350 µg/ml by Nanodrop and 233 µg/ml by Bradford method using BSA as the standard;

Hôte:

Lapin

Isotype:

IgG

Immunogen Catalog Number:

AG13844

Numéro d'acquisition GenBank:

BC000061

Identification du gène (NCBI):

55054

Nom complet:

ATG16 autophagy related 16-like 1 (S. cerevisiae)

MW calculé

607 aa, 68 kDa

MW observés:

63-71 kDa

Méthode de purification:

Purification par affinité contre l'antigène

Dilutions recommandées:

WB 1:200-1:1000

IP 0.5-4.0 ug for IP and 1:200-1:1000 for WB

Applications

Applications testées:

IP, WB, ELISA

Demandes citées:

CoIP, IF, IHC, WB

Spécificité de l'espèce:

Humain, souris

Espèces citées:

Humain, porc, rat, souris

Contrôles positifs:

WB : tissu splénique de souris, cellules HEK-293T, cellules Jurkat, cellules MCF-7

IP : cellules MCF-7,

Informations générales

Human ATG16L1 is a 607 amino acid protein (~68 kDa) comprising three major domains: the N-terminal ATG5 binding domain (ATG5-BD), the central coiled-coil domain (CCD) and a predicted C-terminal WD40-domain. ATG16L1 α and β (Atg16L1 α , 63 kDa; and Atg16L1 β , 71 kDa) are the major isoforms expressed in intestinal epithelium and macrophages, and all isoforms encode exon 9, which contains Thr 300. Atg16L1 mediates the cellular degradative process of autophagy and is considered a critical regulator of inflammation based on its genetic association with inflammatory bowel disease. ATG16L1 has been implicated in Crohn's disease. (PMID: 24553140, PMID: 22740627, PMID: 28685931)

Publications notables

Autrice	Pubmed ID	Journal	Application
Yunjing Zou	36362066	Int J Mol Sci	WB
Shuang-Zhou Peng	34645818	Nat Commun	IF
Yaling Li	33210714	Acta Biochim Biophys Sin (Shanghai)	WB

Stockage

Stockage:

Stocker à -20°C. Stable pendant un an après l'expédition.

Tampon de stockage:

PBS avec azoture de sodium à 0,02 % et glycérol à 50 % pH 7,3

L'aliquotage n'est pas nécessaire pour le stockage à -20C

*** Les 20ul contiennent 0,1% de BSA.

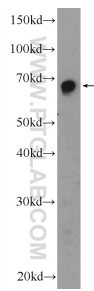
For technical support and original validation data for this product please contact:

T: 1 (888) 4PTGLAB (1-888-478-4522) (toll free in USA), or 1(312) 455-8498 (outside USA)

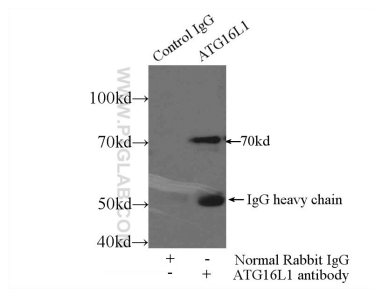
E: proteintech@ptglab.com
W: ptglab.com

This product is exclusively available under Proteintech Group brand and is not available to purchase from any other manufacturer.

Données de validation sélectionnées



mouse spleen tissue were subjected to SDS PAGE followed by western blot with 19812-1-AP (ATG16L1 Antibody) at dilution of 1:300 incubated at room temperature for 1.5 hours.



IP Result of anti-ATG16L1 (IP:19812-1-AP, 4ug; Detection:19812-1-AP 1:300) with MCF-7 cells lysate 2000ug.