

À des fins de recherche uniquement

Anticorps Polyclonal de lapin anti-C14orf166



Numéro de catalogue: 19848-1-AP

Phare

6 Publications

Informations de base

Numéro de catalogue:

19848-1-AP

Taille:

150ul, Concentration: 400 µg/ml by Nanodrop and 207 µg/ml by Bradford method using BSA as the standard;

Hôte:

Lapin

Isotype:

IgG

Immunogen Catalog Number:

AG13900

Numéro d'acquisition GenBank:

BC001722

Identification du gène (NCBI):

51637

Nom complet:

chromosome 14 open reading frame

166

MW calculé

244 aa, 28 kDa

MW observés:

28 kDa

Méthode de purification:

Purification par affinité contre l'antigène

Dilutions recommandées:

WB 1:1000-1:6000

IP 0.5-4.0 ug for IP and 1:500-1:1000 for WB

IHC 1:50-1:500

IF 1:50-1:500

Applications

Applications testées:

IF, IHC, IP, WB, ELISA

Demandes citées:

IHC, WB

Spécificité de l'espèce:

Humain, rat, souris

Espèces citées:

Humain, souris

Remarque-IHC: il est suggéré de démasquer l'antigène avec un tampon de TE buffer pH 9,0; (*) A défaut, 'le démasquage de l'antigène peut être effectué avec un tampon citrate pH 6,0.

Contrôles positifs:

WB : cellules A549, cellules Jurkat, tissu pancréatique de souris, tissu pulmonaire de souris

IP : cellules Jurkat,

IHC : tissu de cancer du sein humain, tissu de cancer de la prostate humain

IF : cellules Jurkat,

Informations générales

Human CLE/C14orf166 protein is a positive modulator of cellular RNA polymerase. CLE is also shown to interact with the influenza virus polymerase complex and colocalizes with viral ribonucleoproteins, and is required for viral replication. Similarly, CLE is identified as a novel host interacting partners of the mature hepatitis C virus core protein. CLE levels were significantly higher in the serum of patients with PaCa compared with the control group was strongly expressed in tumor cells, suggesting that C14orf166 may be a potential biomarker of pancreatic adenocarcinoma.

Publications notables

Autrice	Pubmed ID	Journal	Application
Lin Yang	25964093	Tumour Biol	WB, IHC
Weijing Zhang	26219895	Tumour Biol	WB, IHC
Teruhiko Suzuki	33503245	Nucleic Acids Res	WB

Stockage

Stockage:

Stocker à -20°C. Stable pendant un an après l'expédition.

Tampon de stockage:

PBS avec azoture de sodium à 0,02 % et glycérol à 50 % pH 7,3

L'aliquotage n'est pas nécessaire pour le stockage à -20C

*** Les 20ul contiennent 0,1% de BSA.

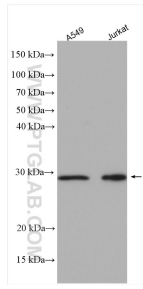
For technical support and original validation data for this product please contact:

T: 1 (888) 4PTGLAB (1-888-478-4522) (toll free in USA), or 1(312) 455-8498 (outside USA)

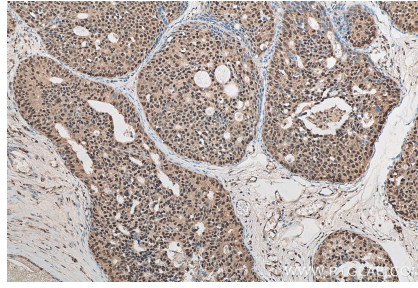
E: proteintech@ptglab.com
W: ptglab.com

This product is exclusively available under Proteintech Group brand and is not available to purchase from any other manufacturer.

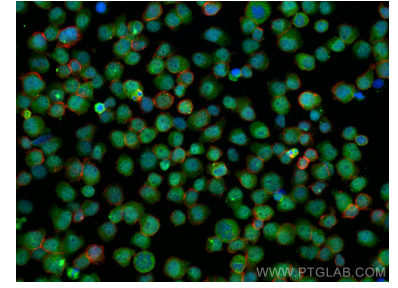
Données de validation sélectionnées



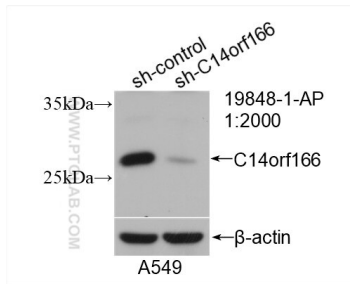
Various lysates were subjected to SDS PAGE followed by western blot with 19848-1-AP (C14orf166 antibody) at dilution of 1:3000 incubated at room temperature for 1.5 hours.



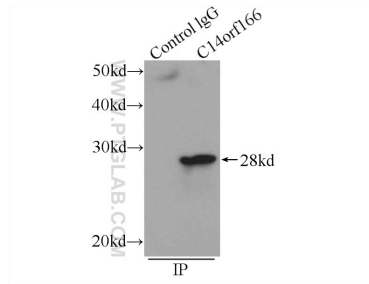
Immunohistochemical analysis of paraffin-embedded human breast cancer tissue slide using 19848-1-AP (C14orf166 antibody) at dilution of 1:200 (under 10x lens). Heat mediated antigen retrieval with Tris-EDTA buffer (pH 9.0).



Immunofluorescent analysis of (4% PFA) fixed Jurkat cells using C14orf166 antibody (19848-1-AP) at dilution of 1:200 and Coralite@488-Conjugated AffiniPure Goat Anti-Rabbit IgG(H+L), CL594-Phalloidin (red).



WB result of C14orf166 antibody (19848-1-AP; 1:2000; incubated at room temperature for 1.5 hours) with sh-Control and sh-C14orf166 transfected A549 cells.



IP Result of anti-C14orf166 (IP:19848-1-AP, 3ug; Detection:19848-1-AP 1:700) with Jurkat cells lysate 1080ug.