

À des fins de recherche uniquement

Anticorps Polyclonal de lapin anti-Alpha galactosidase A



Numéro de catalogue: 19877-1-AP

1 Publications

Informations de base

Numéro de catalogue:
19877-1-AP

Taille:
150ul, Concentration: 500 µg/ml by Nanodrop and 287 µg/ml by Bradford method using BSA as the standard;

Hôte:
Lapin

Isotype:
IgG

Immunogen Catalog Number:
AG7505

Numéro d'acquisition GenBank:
BC002689

Identification du gène (NCBI):
2717

Nom complet:
galactosidase, alpha

MW calculé
49 kDa

MW observés:
49 kDa

Méthode de purification:
Purification par affinité contre l'antigène

Dilutions recommandées:
WB 1:500-1:3000
IF 1:10-1:100

Applications

Applications testées:
IF, WB, ELISA

Demandes citées:
WB

Spécificité de l'espèce:
Humain, rat, souris

Espèces citées:
Humain

Contrôles positifs:

WB : cellules HEK-293,

IF : cellules HepG2,

Informations générales

GLA, also named as Melibiase, Agalsidas and Alpha-galactosidase A, Belongs to the glycosyl hydrolase 27 family. It hydrolysis of terminal, non-reducing alpha-D-galactose residues in alpha-D-galactosides, including galactose oligosaccharides, galactomannans and galactolipids. Fabry disease is an X-linked lysosomal storage disorder resulting from the deficient activity of GLA. Enzyme replacement therapy (ERT) with GLA is currently the most effective therapeutic strategy for patients with Fabry disease, a lysosomal storage disease.

Publications notables

Autrice	Pubmed ID	Journal	Application
Xin Zhao	32398959	Int J Biol Sci	WB

Stockage

Stockage:
Stocker à -20°C. Stable pendant un an après l'expédition.

Tampon de stockage:
PBS avec azoture de sodium à 0,02 % et glycérol à 50 % pH 7,3
L'aliquotage n'est pas nécessaire pour le stockage à -20C

*** Les 20ul contiennent 0,1% de BSA.

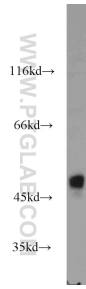
For technical support and original validation data for this product please contact:

T: 1 (888) 4PTGLAB (1-888-478-4522) (toll free in USA), or 1(312) 455-8498 (outside USA)

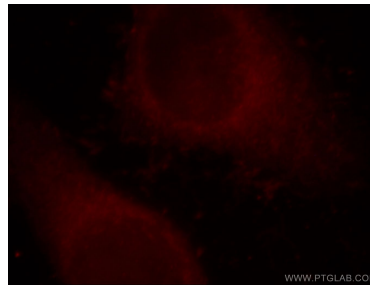
E: proteintech@ptglab.com
W: ptglab.com

This product is exclusively available under Proteintech Group brand and is not available to purchase from any other manufacturer.

Données de validation sélectionnées



HEK-293 cells were subjected to SDS PAGE followed by western blot with 19877-1-AP (Alpha galactosidase A antibody) at dilution of 1:1500 incubated at room temperature for 1.5 hours.



Immunofluorescent analysis of HepG2 cells, using GLA antibody 19877-1-AP at 1:25 dilution and Rhodamine-labeled goat anti-rabbit IgG (red).