

À des fins de recherche uniquement

# Anticorps Polyclonal de lapin anti-TMEM38B



Numéro de catalogue: 19919-1-AP **Phare**

## Informations de base

<b>Numéro de catalogue:</b> 19919-1-AP	<b>Numéro d'acquisition GenBank:</b> BC000049	<b>Méthode de purification:</b> Purification par affinité contre l'antigène
<b>Taille:</b> 150ul , Concentration: 1000 µg/ml by Nanodrop and 380 µg/ml by Bradford method using BSA as the standard;	<b>Identification du gène (NCBI):</b> 55151	<b>Dilutions recommandées:</b> WB 1:500-1:1000 IHC 1:50-1:500 IF 1:10-1:100
<b>Hôte:</b> Lapin	<b>Nom complet:</b> transmembrane protein 38B	
<b>Isotype:</b> IgG	<b>MW calculé:</b> 291 aa, 33 kDa	
<b>Immunogen Catalog Number:</b> AG13835	<b>MW observés:</b> 28 kDa	

## Applications

<b>Applications testées:</b> IF, IHC, WB, ELISA	<b>Contrôles positifs:</b> WB : cellules HeLa, cellules MCF-7 IHC : tissu testiculaire de souris, tissu rénal humain IF : cellules HeLa,
<b>Spécificité de l'espèce:</b> Humain, souris	
<b>Remarque-IHC:</b> <i>il est suggéré de démasquer l'antigène avec un tampon de TE buffer pH 9,0; (*) À défaut, 'le démasquage de l'antigène peut être 'effectué avec un tampon citrate pH 6,0.</i>	

## Informations générales

TMEM38B, also named as Trimeric intracellular cation channel type B, is a 291 amino acid protein, which belongs to the TMEM38 family. TMEM38B localizes in the endoplasmic reticulum and may act as a potassium counter-ion channel that functions in synchronization with calcium release from intracellular stores. TMEM38B has an association with Osteogenesis imperfecta 14.

## Stockage

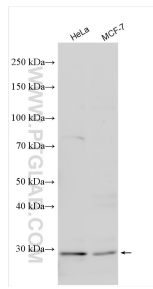
**Stockage:**  
Stocker à -20°C. Stable pendant un an après l'expédition.  
**Tampon de stockage:**  
PBS avec azoture de sodium à 0,02 % et glycérol à 50 % pH 7,3  
L'aliquotage n'est pas nécessaire pour le stockage à -20C

\*\*\* Les 20ul contiennent 0,1% de BSA.

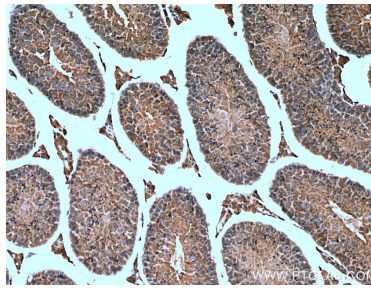
For technical support and original validation data for this product please contact:  
T: 1 (888) 4PTGLAB (1-888-478-4522) (toll free in USA), or 1(312) 455-8498 (outside USA) E: proteintech@ptglab.com W: ptglab.com

This product is exclusively available under Proteintech Group brand and is not available to purchase from any other manufacturer.

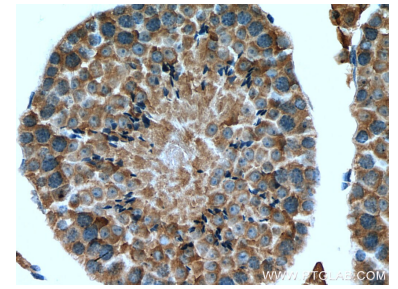
## Données de validation sélectionnées



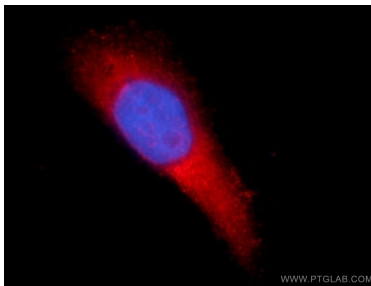
Various lysates were subjected to SDS PAGE followed by western blot with 19919-1-AP (TMEM38B antibody) at dilution of 1:600 incubated at room temperature for 1.5 hours.



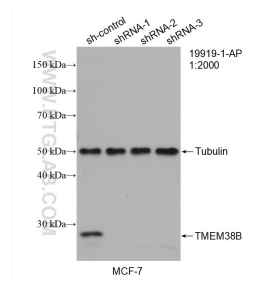
Immunohistochemical analysis of paraffin-embedded mouse testis tissue slide using 19919-1-AP (TMEM38B antibody) at dilution of 1:100 (under 10x lens). Heat mediated antigen retrieval with Tris-EDTA buffer (pH 9.0).



Immunohistochemical analysis of paraffin-embedded mouse testis tissue slide using 19919-1-AP (TMEM38B antibody) at dilution of 1:100 (under 40x lens). Heat mediated antigen retrieval with Tris-EDTA buffer (pH 9.0).



Immunofluorescent analysis of HeLa cells using 19919-1-AP (TMEM38B antibody) at dilution of 1:25 and Alexa Fluor 594-conjugated AffiniPure Goat Anti-Rabbit IgG(H+L).



WB result of TMEM38B antibody (19919-1-AP; 1:2000); incubated at room temperature for 1.5 hours) with sh-Control and sh-TMEM38B transfected MCF-7 cells.