

À des fins de recherche uniquement

Anticorps Polyclonal de lapin anti-TMEM175



Numéro de catalogue: 19925-1-AP

Phare

11 Publications

Informations de base

Numéro de catalogue: 19925-1-AP	Numéro d'acquisition GenBank: BC005158	Méthode de purification: Purification par affinité contre l'antigène
Taille: 150ul , Concentration: 600 µg/ml by Nanodrop;	Identification du gène (NCBI): 84286	Dilutions recommandées: WB 1:500-1:3000 IHC 1:50-1:500
Hôte: Lapin	Nom complet: transmembrane protein 175	
Isotype: IgG	MW calculé: 504 aa, 56 kDa	
Immunogen Catalog Number: AG13890	MW observés: 41-45 kDa, 54-60 kDa	

Applications

Applications testées:

IHC, WB, ELISA

Demandes citées:

CoIP, IF, IP, WB

Spécificité de l'espèce:

Humain, rat, souris

Espèces citées:

Humain, rat, singe, souris

Contrôles positifs:

WB : cellules HeLa, cellules HEK-293, cellules HepG2, cellules SH-SY5Y

IHC : tissu cérébral de souris,

Remarque-IHC: il est suggéré de démasquer l'antigène avec un tampon de TE buffer pH 9,0; (*) À défaut, le démasquage de l'antigène peut être effectué avec un tampon citrate pH 6,0.

Informations générales

TMEM175 has two repeats of 6-transmembrane-spanning segments and has no GYG K⁺ channel sequence signature-containing, pore-forming P loop. Lysosomes lacking TMEM175 exhibit no K⁺ conductance, have a markedly depolarized $\Delta\Psi$ and little sensitivity to changes in [K⁺], and have compromised luminal pH stability and abnormal fusion with autophagosomes during autophagy. TMEM175 comprises a K⁺ channel that underlies the molecular mechanism of lysosomal K⁺ permeability. It has two isoforms with MW 41-45 kDa and 54-60 kDa. For optimal WB detection with this antibody, we recommend avoiding boiling the sample after lysis.

Publications notables

Autrice	Pubmed ID	Journal	Application
Lynne Krohn	31658403	Ann Neurol	WB
Sarah Jinn	31261387	Hum Mol Genet	WB
Jinhong Wie	33505021	Nature	WB

Stockage

Stockage:

Stocker à -20°C. Stable pendant un an après l'expédition.

Tampon de stockage:

PBS avec azoture de sodium à 0,02 % et glycérol à 50 % pH 7,3

L'aliquotage n'est pas nécessaire pour le stockage à -20C

*** Les 20ul contiennent 0,1% de BSA.

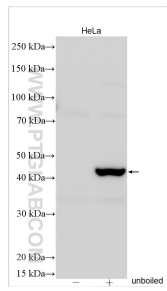
For technical support and original validation data for this product please contact:

T: 1 (888) 4PTGLAB (1-888-478-4522) (toll free in USA), or 1(312) 455-8498 (outside USA)

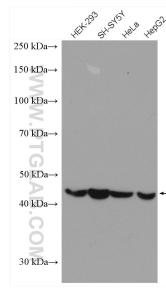
E: proteintech@ptglab.com
W: ptglab.com

This product is exclusively available under Proteintech Group brand and is not available to purchase from any other manufacturer.

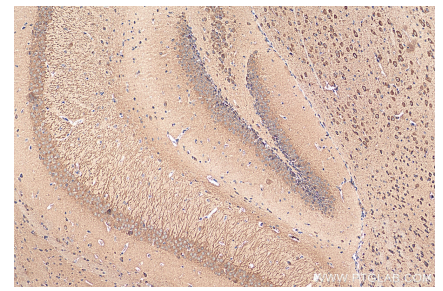
Données de validation sélectionnées



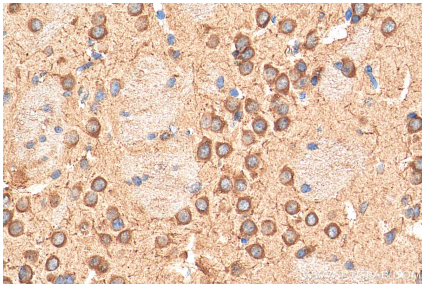
Boiled and unboiled HeLa cell lysates were subjected to SDS PAGE followed by western blot with 19925-1-AP (TMEM175 antibody) at dilution of 1:1500 incubated at room temperature for 1.5 hours.



Various lysates were subjected to SDS PAGE followed by western blot with 19925-1-AP (TMEM175 antibody) at dilution of 1:1500 incubated at room temperature for 1.5 hours.



Immunohistochemical analysis of paraffin-embedded mouse brain tissue slide using 19925-1-AP (TMEM175 antibody) at dilution of 1:200 (under 10x lens). Heat mediated antigen retrieval with Tris-EDTA buffer (pH 9.0).



Immunohistochemical analysis of paraffin-embedded mouse brain tissue slide using 19925-1-AP (TMEM175 antibody) at dilution of 1:200 (under 40x lens). Heat mediated antigen retrieval with Tris-EDTA buffer (pH 9.0).