

À des fins de recherche uniquement

# Anticorps Polyclonal de lapin anti-mGluR1



Numéro de catalogue: 19955-1-AP

3 Publications

## Informations de base

<b>Numéro de catalogue:</b> 19955-1-AP	<b>Numéro d'acquisition GenBank:</b> NM_000838	<b>Méthode de purification:</b> Purification par affinité contre l'antigène
<b>Taille:</b> 150ul, Concentration: 260 µg/ml by Nanodrop and 167 µg/ml by Bradford method using BSA as the standard;	<b>Identification du gène (NCBI):</b> 2911	<b>Dilutions recommandées:</b> IHC 1:50-1:500 IF 1:50-1:500
<b>Hôte:</b> Lapin	<b>Nom complet:</b> glutamate receptor, metabotropic 1	
<b>Isotype:</b> IgG	<b>MW calculé:</b> 132 kDa	

## Applications

<b>Applications testées:</b> FC, IF, IHC, ELISA	<b>Contrôles positifs:</b> IHC : tissu cérébral de souris, IF : tissu cérébral de souris,
<b>Spécificité de l'espèce:</b> Humain, souris	
<b>Espèces citées:</b> Humain	

**Remarque-IHC: il est suggéré de démasquer l'antigène avec un tampon de TE buffer pH 9.0; (\*) À défaut, le démasquage de l'antigène peut être effectué avec un tampon citrate pH 6,0.**

## Informations générales

GRM1, also named as GPRC1A and MGLUR1, belongs to the G-protein coupled receptor 3 family. GRM1 is a receptor for glutamate. The activity of GRM1 is mediated by a G-protein that activates a phosphatidylinositol-calcium second messenger system. It may participate in the central action of glutamate in the CNS, such as long-term potentiation in the hippocampus and long-term depression in the cerebellum. The antibody can recognize isoform1 and isoform2 of GRM1.

## Publications notables

Autrice	Pubmed ID	Journal	Application
Jee Hyun Yi	32766549	Brain Commun	WB
Stacey S Willard	23983606	Int J Biol Sci	WB
Koochekpour Shahriar S	23072969	Clin Cancer Res	WB

## Stockage

**Stockage:**  
Stocker à -20°C. Stable pendant un an après l'expédition.  
**Tampon de stockage:**  
PBS avec azoture de sodium à 0,02 % et glycérol à 50 % pH 7,3  
L'aliquotage n'est pas nécessaire pour le stockage à -20C

\*\*\* Les 20ul contiennent 0,1% de BSA.

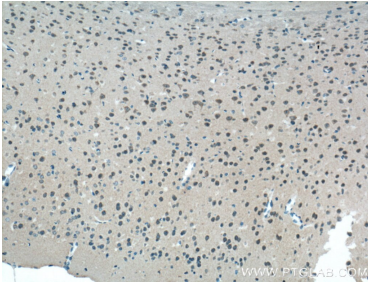
For technical support and original validation data for this product please contact:

T: 1 (888) 4PTGLAB (1-888-478-4522) (toll free in USA), or 1(312) 455-8498 (outside USA)

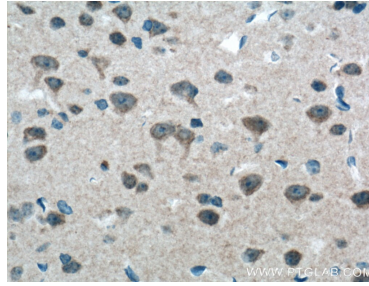
E: proteintech@ptglab.com  
W: ptglab.com

This product is exclusively available under Proteintech Group brand and is not available to purchase from any other manufacturer.

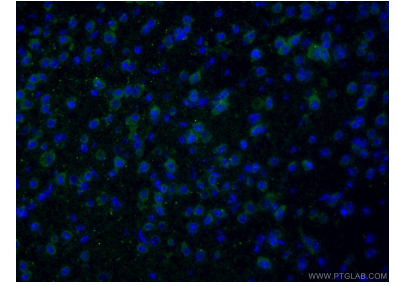
## Données de validation sélectionnées



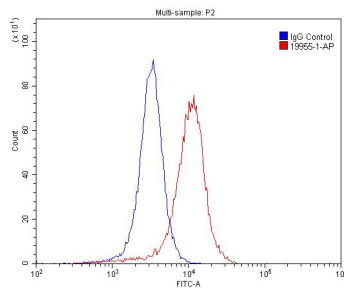
Immunohistochemical analysis of paraffin-embedded mouse brain tissue slide using 19955-1-AP (mGluR1 antibody at dilution of 1:200) (under 10x lens). Heat mediated antigen retrieval with Tris-EDTA buffer (pH 9.0).



Immunohistochemical analysis of paraffin-embedded mouse brain tissue slide using 19955-1-AP (mGluR1 antibody at dilution of 1:200) (under 40x lens). Heat mediated antigen retrieval with Tris-EDTA buffer (pH 9.0).



Immunofluorescent analysis of (4% PFA) fixed mouse brain tissue using 19955-1-AP (mGluR1 antibody) at dilution of 1:50 and Alexa Fluor 488-conjugated AffiniPure Goat Anti-Rabbit IgG(H+L).



1X10<sup>6</sup> SH-SY5Y cells were stained with 0.2ug mGluR1 antibody (19955-1-AP, red) and control antibody (blue). Fixed with 4% PFA blocked with 3% BSA (30 min). Alexa Fluor 488-conjugated AffiniPure Goat Anti-Rabbit IgG(H+L) with dilution 1:1500.