

À des fins de recherche uniquement

Anticorps Polyclonal de lapin anti-ITPR1-specific



Numéro de catalogue: 19962-1-AP

20 Publications

Informations de base

Numéro de catalogue:

19962-1-AP

Taille:

150ul, Concentration: 600 µg/ml by Nanodrop;

Hôte:

Lapin

Isotype:

IgG

Numéro d'acquisition GenBank:

NM_001099952

Identification du gène (NCBI):

3708

Nom complet:

inositol 1,4,5-triphosphate receptor, type 1

MW calculé

314 kDa

MW observés:

290-300 kDa

Méthode de purification:

Purification par affinité contre l'antigène

Dilutions recommandées:

WB 1:200-1:1000

IP 0.5-4.0 ug for IP and 1:150-1:600 for WB

IHC 1:50-1:500

Applications

Applications testées:

FC, IHC, IP, WB, ELISA

Demandes citées:

IHC, IP, WB

Spécificité de l'espèce:

Humain, rat, souris

Espèces citées:

Humain, poulet, rat, souris

Contrôles positifs:

WB : tissu cérébral de souris, tissu hépatique de souris

IP : tissu cérébral de souris,

IHC : tissu cérébral humain, tissu cérébral de souris, tissu testiculaire humain

Remarque-IHC: il est suggéré de démasquer l'antigène avec un tampon de TE buffer pH 9,0; (*) À défaut, le démasquage de l'antigène peut être effectué avec un tampon citrate pH 6,0.

Informations générales

ITPR1, also named as INSP3R1 and IP3R, belongs to the InsP3 receptor family. It is a receptor for inositol 1,4,5-trisphosphate which is a second messenger that mediates the release of intracellular calcium. Defects in ITPR1 are the cause of spinocerebellar ataxia type 15 (SCA15). The antibody has no cross reaction with ITPR2 and ITPR3.

Publications notables

Autrice	Pubmed ID	Journal	Application
Yuxiang Wang	35881904	J Cardiovasc Pharmacol	WB, IP
Xiaolong Wang	29800586	Toxicology	WB
Ming Yang	31060900	EBioMedicine	WB

Stockage

Stockage:

Stocker à -20°C. Stable pendant un an après l'expédition.

Tampon de stockage:

PBS avec azoture de sodium à 0,02 % et glycérol à 50 % pH 7,3

L'aliquotage n'est pas nécessaire pour le stockage à -20C

*** Les 20ul contiennent 0,1% de BSA.

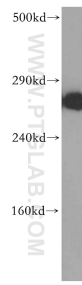
For technical support and original validation data for this product please contact:

T: 1 (888) 4PTGLAB (1-888-478-4522) (toll free in USA), or 1(312) 455-8498 (outside USA)

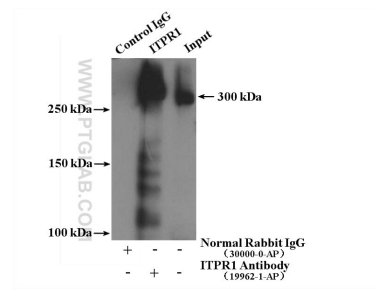
E: proteintech@ptglab.com
W: ptglab.com

This product is exclusively available under Proteintech Group brand and is not available to purchase from any other manufacturer.

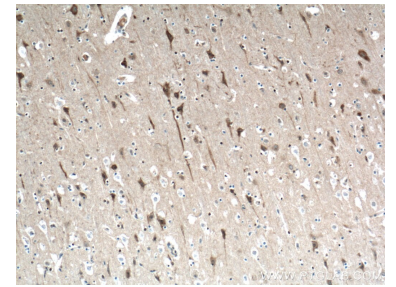
Données de validation sélectionnées



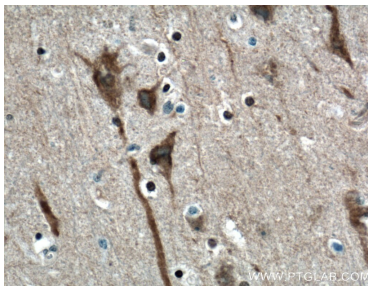
mouse brain tissue were subjected to SDS PAGE followed by western blot with 19962-1-AP (ITPR1-specific antibody) at dilution of 1:300 incubated at room temperature for 1.5 hours.



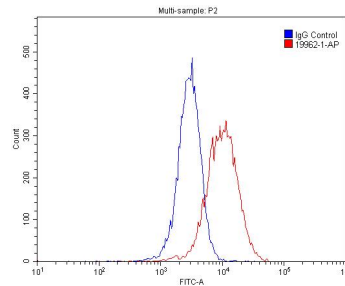
IP result of anti-ITPR1-specific (IP:19962-1-AP, 4ug; Detection:19962-1-AP 1:300) with mouse brain tissue lysate 3160 ug.



Immunohistochemical analysis of paraffin-embedded human brain tissue slide using 19962-1-AP (ITPR1-specific antibody) at dilution of 1:200 (under 10x lens. Heat mediated antigen retrieval with Tris-EDTA buffer (pH 9.0).



Immunohistochemical analysis of paraffin-embedded human brain tissue slide using 19962-1-AP (ITPR1-specific antibody) at dilution of 1:200 (under 40x lens. Heat mediated antigen retrieval with Tris-EDTA buffer (pH 9.0).



1X10⁶ HepG2 cells were stained with 0.2 ug ITPR1-specific antibody (19962-1-AP, red) and control antibody (blue). Cells were fixed with 4% PFA and permeabilized with 0.1% Triton X-100. Alexa Fluor 488-conjugated AffiniPure Goat Anti-Rabbit IgG(H+L) with dilution 1:1500.