

À des fins de recherche uniquement

Anticorps Polyclonal de lapin anti-LHCGR



Numéro de catalogue: 19968-1-AP

Phare

19 Publications

Informations de base

Numéro de catalogue:
19968-1-AP

Taille:
150ul, Concentration: 900 µg/ml by
Nanodrop and 433 µg/ml by Bradford
method using BSA as the standard;

Hôte:
Lapin

Isotype:
IgG

Numéro d'acquisition GenBank:
NM_000233

Identification du gène (NCBI):
3973

Nom complet:
LHCGR

MW calculé
79 kDa

MW observés:
90-100 kDa

Méthode de purification:
Purification par affinité contre
l'antigène

Dilutions recommandées:
WB 1:500-1:3000
IP 0.5-4.0 ug for IP and 1:150-1:600 for
WB
IF 1:50-1:500

Applications

Applications testées:
FC, IF, IP, WB, ELISA

Demandes citées:
IHC, WB

Spécificité de l'espèce:
Humain, rat, souris

Espèces citées:
Humain, rat, souris

Contrôles positifs:

WB : tissu testiculaire de souris non bouilli, tissu
ovarien de souris

IP : tissu testiculaire de souris,

IF : tissu ovarien de souris,

Informations générales

Lutropin-choriogonadotropic hormone receptor (LHCGR, also known as LHR or LSHR) belongs to the rhodopsin-like family of G protein-coupled receptors (GPCRs) and plays a crucial role in the regulation of gonadal functions by stimulating steroidogenesis in response to luteinizing hormone (LH) or hCG (PMID: 15866423). Mutations in LHCGR gene result in familial male-limited precocious puberty, Leydig cell hypoplasia, and empty follicle syndrome (PMID: 30711030). LHCGR protein consists of 699 amino acids with a calculated molecular weight of 79 kDa. Due to massive glycosylation, the molecular mass of the mature LHCGR is higher (85-100 kDa) than the predicted molecular protein mass of 79 kDa (PMID: 23686864; 15866423; 29075189; 15969756).

Publications notables

Autrice	Pubmed ID	Journal	Application
Yu-Meng Wang	34697294	Cell Death Dis	WB
Huilan Wang	36202220	Gen Comp Endocrinol	WB
Yu Su	34039393	Nutr Metab (Lond)	WB, IHC

Stockage

Stockage:

Stocker à -20°C. Stable pendant un an après l'expédition.

Tampon de stockage:

PBS avec azoture de sodium à 0,02 % et glycérol à 50 % pH 7,3

L'aliquotage n'est pas nécessaire pour le stockage à -20C

*** Les 20ul contiennent 0,1% de BSA.

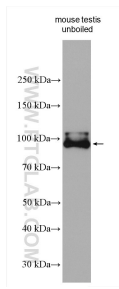
For technical support and original validation data for this product please contact:

T: 1 (888) 4PTGLAB (1-888-478-4522) (toll free
in USA), or 1(312) 455-8498 (outside USA)

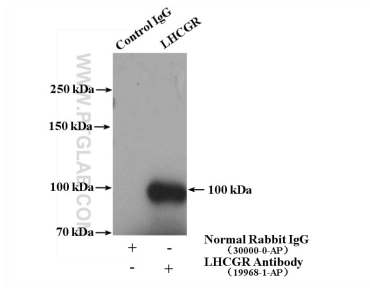
E: proteintech@ptglab.com
W: ptglab.com

This product is exclusively available under Proteintech Group brand and is not available to purchase from any other manufacturer.

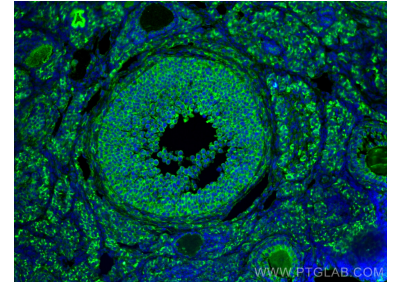
Données de validation sélectionnées



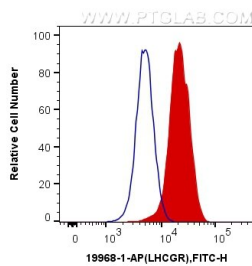
Unboiled mouse testis tissue was subjected to SDS PAGE followed by western blot with 19968-1-AP (LHCGR antibody) at dilution of 1:1500 incubated at room temperature for 1.5 hours.



IP Result of anti-LHCGR (IP:19968-1-AP, 4ug; Detection:19968-1-AP 1:300) with mouse testis tissue lysate 4000ug.



Immunofluorescent analysis of (4% PFA) fixed mouse ovary tissue using LHCGR antibody (19968-1-AP) at dilution of 1:200 and CoraLite@488-Conjugated AffiniPure Goat Anti-Rabbit IgG(H+L).



1X10⁶ Jurkat cells were intracellularly stained with 0.4 ug Anti-Human LHCGR (19968-1-AP) and CoraLite@488-Conjugated AffiniPure Goat Anti-Rabbit IgG(H+L) at dilution 1:1000 (red), or 0.4 ug x. Cells were fixed with 4% PFA and permeabilized with Flow Cytometry Perm Buffer (PF00011-C).