

À des fins de recherche uniquement

Anticorps Polyclonal de lapin anti-MAP3K1



Numéro de catalogue: 19970-1-AP

Phare

9 Publications

Informations de base

Numéro de catalogue:

19970-1-AP

Taille:

150ul, Concentration: 300 µg/ml by Nanodrop;

Hôte:

Lapin

Isotype:

IgG

Numéro d'acquisition GenBank:

NM_005921

Identification du gène (NCBI):

4214

Nom complet:

mitogen-activated protein kinase kinase kinase 1

MW calculé

164 kDa

MW observés:

164 kDa

Méthode de purification:

Purification par affinité contre l'antigène

Dilutions recommandées:

WB 1:1000-1:4000

IP 0.5-4.0 µg for IP and 1:500-1:2000 for WB

IHC 1:50-1:500

IF 1:20-1:200

Applications

Applications testées:

IF, IHC, IP, WB, ELISA

Demandes citées:

IF, WB

Spécificité de l'espèce:

Humain, rat, souris

Espèces citées:

Humain, souris

Contrôles positifs:

WB : tissu embryonnaire de souris, cellules A431, cellules A549, cellules NIH/3T3, tissu splénique de rat, tissu splénique de souris

IP : cellules NIH/3T3,

IHC : tissu splénique humain,

IF : cellules HeLa,

Remarque-IHC: il est suggéré de démasquer l'antigène avec un tampon de TE buffer pH 9,0; (*) À défaut, le démasquage de l'antigène peut être effectué avec un tampon citrate pH 6,0.

Informations générales

MAP3K1, also named as MAPKKK1, MEKK and MEKK1, belongs to the protein kinase superfamily, STE Ser/Thr protein kinase family and MAP kinase kinase kinase subfamily. MAP3K1 is a component of a protein kinase signal transduction cascade. MAP3K1 activates the ERK and JNK kinase pathways by phosphorylation of MAP2K1 and MAP2K4. It activates CHUK and IKKB, the central protein kinases of the NF-kappa-B pathway. It catalyzes the reaction: ATP + a protein = ADP + a phosphoprotein. The antibody recognizes the N-term of MAP3K1.

Publications notables

Autrice	Pubmed ID	Journal	Application
Jingsheng Yuan	36244648	Cell Mol Gastroenterol Hepatol	WB
Zepeng Xu	34655847	Int Immunopharmacol	WB
Rui Tang	31853225	Int J Biol Sci	WB

Stockage

Stockage:

Stocker à -20°C. Stable pendant un an après l'expédition.

Tampon de stockage:

PBS avec azoture de sodium à 0,02 % et glycérol à 50 % pH 7,3

L'aliquotage n'est pas nécessaire pour le stockage à -20C

***** Les 20ul contiennent 0,1% de BSA.**

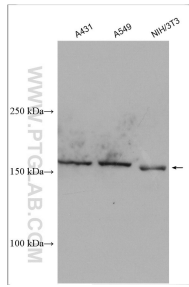
For technical support and original validation data for this product please contact:

T: 1 (888) 4PTGLAB (1-888-478-4522) (toll free in USA), or 1(312) 455-8498 (outside USA)

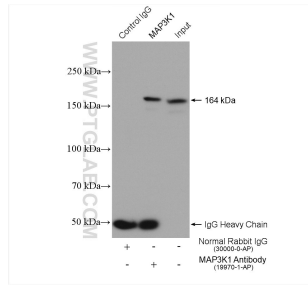
E: proteintech@ptglab.com
W: ptglab.com

This product is exclusively available under Proteintech Group brand and is not available to purchase from any other manufacturer.

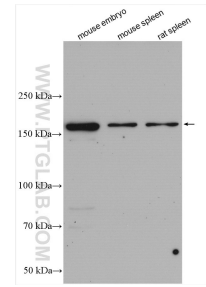
Données de validation sélectionnées



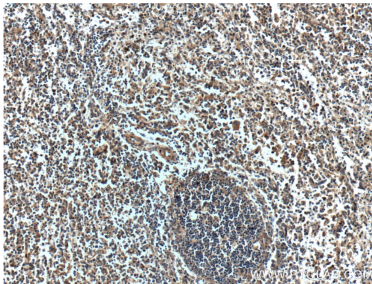
Various lysates were subjected to SDS PAGE followed by western blot with 19970-1-AP (MAP3K1 antibody) at dilution of 1:500 incubated at room temperature for 1.5 hours.



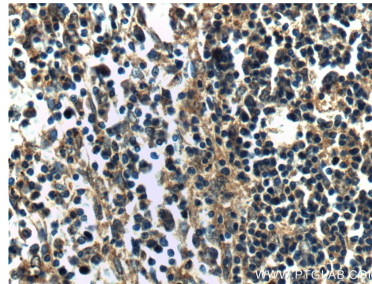
IP result of anti-MAP3K1(IP:19970-1-AP, 4ug; Detection:19970-1-AP 1:1000) with NIH/3T3 cells lysate 1120 ug.



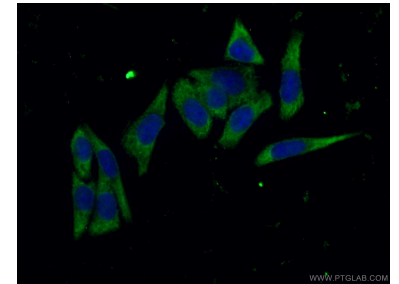
Various lysates were subjected to SDS PAGE followed by western blot with 19970-1-AP (MAP3K1 antibody) at dilution of 1:2000 incubated at room temperature for 1.5 hours.



Immunohistochemical analysis of paraffin-embedded human spleen tissue slide using 19970-1-AP (MAP3K1 Antibody) at dilution of 1:200 (under 10x lens).



Immunohistochemical analysis of paraffin-embedded human spleen tissue slide using 19970-1-AP (MAP3K1 Antibody) at dilution of 1:200 (under 40x lens).



Immunofluorescent analysis of (-20°C Ethanol) fixed HeLa cells using 19970-1-AP (MAP3K1 antibody) at dilution of 1:50 and Alexa Fluor 488-conjugated AffiniPure Goat Anti-Rabbit IgG(H+L).