

À des fins de recherche uniquement

Anticorps Polyclonal de lapin anti-MYBPC3



Numéro de catalogue: 19977-1-AP

2 Publications

Informations de base

Numéro de catalogue: 19977-1-AP	Numéro d'acquisition GenBank: NM_000256	Méthode de purification: Purification par affinité contre l'antigène
Taille: 150ul , Concentration: 1000 µg/ml by Nanodrop;	Identification du gène (NCBI): 4607	Dilutions recommandées: WB 1:500-1:3000 IHC 1:50-1:500 IF 1:50-1:500
Hôte: Lapin	Nom complet: myosin binding protein C, cardiac	
Isotype: IgG	MW calculé: 141 kDa	
	MW observés: 141-150 kDa	

Applications

Applications testées:

IF, IHC, WB, ELISA

Demandes citées:

IHC, WB

Spécificité de l'espèce:

Humain, rat, souris

Espèces citées:

Humain, souris

Remarque-IHC: il est suggéré de démasquer l'antigène avec un tampon de TE buffer pH 9,0; (*) À défaut, le démasquage de l'antigène peut être effectué avec un tampon citrate pH 6,0.

Contrôles positifs:

WB : tissu cardiaque de souris, tissu cardiaque de rat, tissu cardiaque humain

IHC : tissu cardiaque de souris,

IF : tissu cardiaque de souris,

Informations générales

MYBPC3 belongs to the immunoglobulin superfamily and MyBP family. MYBPC3 located in the crossbridge region of vertebrate striated muscle a bands. In vitro it binds MHC, F-actin and native thin filaments, and modifies the activity of actin-activated myosin ATPase. It may modulate muscle contraction or may play a more structural role. Defects in MYBPC3 are the cause of cardiomyopathy familial hypertrophic type 4 (CMH4). The antibody detects the full length form and the degradation bands around 28-54 kDa in SDS-PAGE.(PMID: 22076249)

Publications notables

Autrice	Pubmed ID	Journal	Application
Jie-Yuan Jin	35310975	Front Cardiovasc Med	IHC
Julia Straubinger	28138039	FASEB J	WB

Stockage

Stockage:

Stocker à -20°C. Stable pendant un an après l'expédition.

Tampon de stockage:

PBS avec azoture de sodium à 0,02 % et glycérol à 50 % pH 7,3

L'aliquotage n'est pas nécessaire pour le stockage à -20C

*** Les 20ul contiennent 0,1% de BSA.

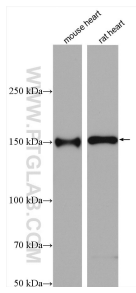
For technical support and original validation data for this product please contact:

T: 1 (888) 4PTGLAB (1-888-478-4522) (toll free in USA), or 1(312) 455-8498 (outside USA)

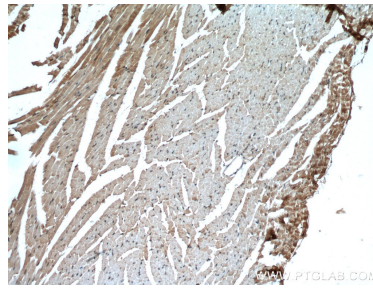
E: proteintech@ptglab.com
W: ptglab.com

This product is exclusively available under Proteintech Group brand and is not available to purchase from any other manufacturer.

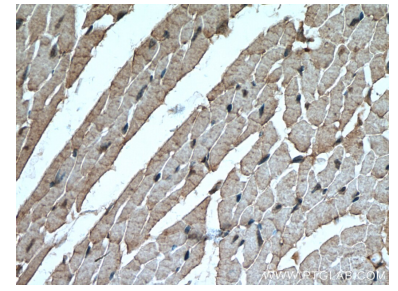
Données de validation sélectionnées



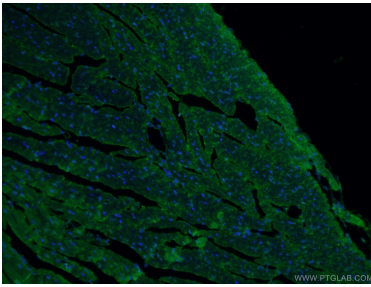
Various lysates were subjected to SDS PAGE followed by western blot with 19977-1-AP (MYBPC3 antibody) at dilution of 1:1500 incubated at room temperature for 1.5 hours.



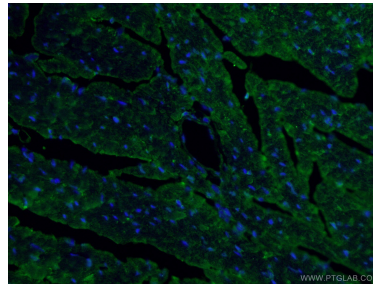
Immunohistochemical analysis of paraffin-embedded mouse heart tissue slide using 19977-1-AP (MYBPC3 antibody) at dilution of 1:200 (under 10x lens. Heat mediated antigen retrieval with Tris-EDTA buffer (pH 9.0).



Immunohistochemical analysis of paraffin-embedded mouse heart tissue slide using 19977-1-AP (MYBPC3 antibody) at dilution of 1:200 (under 40x lens. Heat mediated antigen retrieval with Tris-EDTA buffer (pH 9.0).



Immunofluorescent analysis of (4% PFA) fixed mouse heart tissue using 19977-1-AP (MYBPC3 antibody) at dilution of 1:50 and Alexa Fluor 488-Conjugated AffiniPure Goat Anti-Rabbit IgG(H+L).



Immunofluorescent analysis of (4% PFA) fixed mouse heart tissue using 19977-1-AP (MYBPC3 antibody) at dilution of 1:50 and Alexa Fluor 488-Conjugated AffiniPure Goat Anti-Rabbit IgG(H+L).