

À des fins de recherche uniquement

# Anticorps Polyclonal de lapin anti-LDHA-Specific



Numéro de catalogue: 19987-1-AP

Phare

165 Publications

## Informations de base

Numéro de catalogue:

19987-1-AP

Taille:

150ul, Concentration: 650 µg/ml by Nanodrop;

Hôte:

Lapin

Isotype:

IgG

Numéro d'acquisition GenBank:

NM\_005566

Identification du gène (NCBI):

3939

Nom complet:

lactate dehydrogenase A

MW calculé

37 kDa

MW observés:

32-37 kDa

Méthode de purification:

Purification par affinité contre l'antigène

Dilutions recommandées:

WB 1:2000-1:10000

IP 0.5-4.0 ug for IP and 1:1000-1:4000 for WB

IHC 1:20-1:200

IF 1:50-1:500

## Applications

Applications testées:

FC, IF, IHC, IP, WB, ELISA

Demandes citées:

CoIP, IF, IHC, IP, RIP, WB

Spécificité de l'espèce:

Humain, rat, souris

Espèces citées:

Chèvre, Humain, poulet, rat, souris

**Remarque-IHC: il est suggéré de démasquer l'antigène avec un tampon de TE buffer pH 9.0; (\*) À défaut, 'le démasquage de l'antigène peut être effectué avec un tampon citrate pH 6.0.**

Contrôles positifs:

WB : cellules HEK-293, cellules A431, cellules HeLa, cellules Jurkat, cellules MCF-7, cellules NIH/3T3, tissu rénal de rat, tissu testiculaire de souris

IP : tissu rénal de souris,

IHC : tissu cardiaque humain, tissu de muscle squelettique humain, tissu testiculaire humain

IF : cellules HepG2,

## Informations générales

Lactate dehydrogenase (LDH) is composed of A subunits predominate in skeletal muscle and B subunits are abundantly produced in brain and heart. The LDHA (lactate dehydrogenase A) and COPB1 (coatamer protein complex, subunit beta 1) genes, are involved in energy metabolism and protein transport processes. Both genes might play important roles in muscle development. It has some isoforms with the molecular mass of 27-40 kDa and can form a homotetramer (PMID:11276087). This antibody is specific to LDHA and has no cross reaction to LDHB and LDHC.

## Publications notables

Autrice	Pubmed ID	Journal	Application
Teresa W-M Fan	36150727	J Immunol	
Yuyu Chen	36127325	Cell Death Dis	WB
Di Huang	30224822	Nat Immunol	

## Stockage

Stockage:

Stocker à -20°C. Stable pendant un an après l'expédition.

Tampon de stockage:

PBS avec azoture de sodium à 0,02 % et glycérol à 50 % pH 7,3

L'aliquotage n'est pas nécessaire pour le stockage à -20C

\*\*\* Les 20ul contiennent 0,1% de BSA.

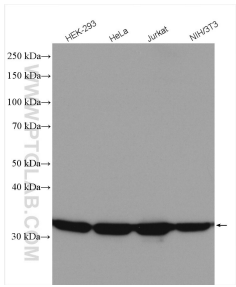
For technical support and original validation data for this product please contact:

T: 1 (888) 4PTGLAB (1-888-478-4522) (toll free in USA), or 1(312) 455-8498 (outside USA)

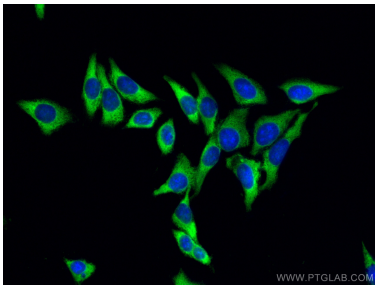
E: [proteintech@ptglab.com](mailto:proteintech@ptglab.com)  
W: [ptglab.com](http://ptglab.com)

This product is exclusively available under Proteintech Group brand and is not available to purchase from any other manufacturer.

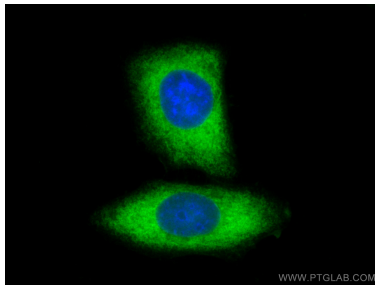
Données de validation sélectionnées



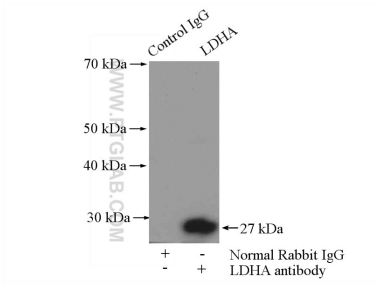
Various lysates were subjected to SDS PAGE followed by western blot with 19987-1-AP (LDHA-Specific antibody) at dilution of 1:5000 incubated at room temperature for 1.5 hours.



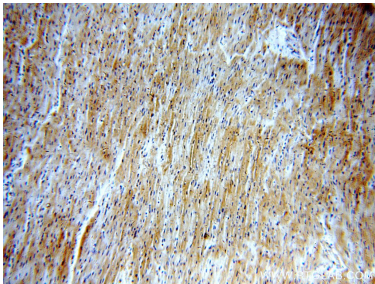
Immunofluorescent analysis of (-20°C Methanol) fixed HepG2 cells using LDHA-Specific antibody (19987-1-AP) at dilution of 1:200 and CoraLite®488-Conjugated AffiniPure Goat Anti-Rabbit IgG(H+L).



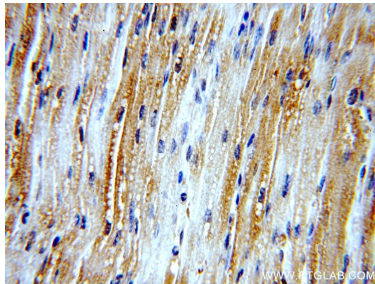
Immunofluorescent analysis of (-20°C Methanol) fixed HepG2 cells using LDHA-Specific antibody (19987-1-AP) at dilution of 1:200 and CoraLite®488-Conjugated AffiniPure Goat Anti-Rabbit IgG(H+L).



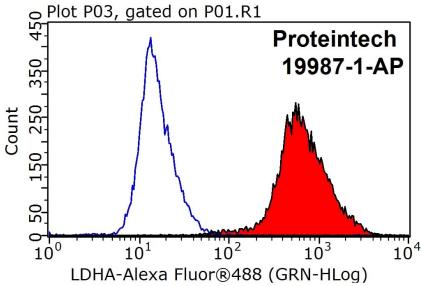
IP Result of anti-LDHA-Specific (IP:19987-1-AP, 4ug; Detection:19987-1-AP 1:2000) with mouse kidney tissue lysate 4000ug.



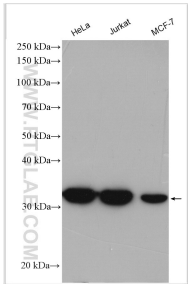
Immunohistochemical analysis of paraffin-embedded human heart using 19987-1-AP (LDHA-Specific antibody) at dilution of 1:100 (under 10x lens).



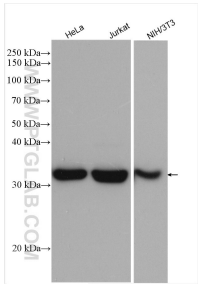
Immunohistochemical analysis of paraffin-embedded human heart using 19987-1-AP (LDHA-Specific antibody) at dilution of 1:100 (under 40x lens).



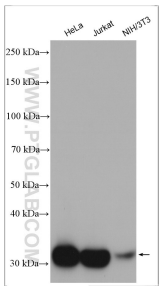
1X10<sup>6</sup> HepG2 cells were stained with 0.2ug LDHA-Specific antibody (19987-1-AP, red) and control antibody (blue). Fixed with 90% MeOH blocked with 3% BSA (30 min). Alexa Fluor 488-conjugated AffiniPure Goat Anti-Rabbit IgG(H+L) with dilution 1:1000.



Various lysates were subjected to SDS PAGE followed by western blot with 19987-1-AP (LDHA-Specific antibody) at dilution of 1:10000 incubated at room temperature for 1.5 hours.



HeLa cells were subjected to SDS PAGE followed by western blot with 19987-1-AP (LDHA-Specific antibody) at dilution of 1:8000 incubated at room temperature for 1.5 hours.



Various lysates were subjected to SDS PAGE followed by western blot with 19987-1-AP (LDHA-Specific antibody) at dilution of 1:8000 incubated at room temperature for 1.5 hours.