

À des fins de recherche uniquement

Anticorps Polyclonal de lapin anti-LDHB-Specific



Numéro de catalogue: 19988-1-AP

Phare

4 Publications

Informations de base

Numéro de catalogue:

19988-1-AP

Numéro d'acquisition GenBank:

NM_002300

Méthode de purification:

Purification par affinité contre l'antigène

Taille:

150ul, Concentration: 300 µg/ml by Nanodrop and 227 µg/ml by Bradford method using BSA as the standard;

Identification du gène (NCBI):

3945

Dilutions recommandées:

WB 1:1000-1:6000

Hôte:

Lapin

Nom complet:

lactate dehydrogenase B

MW calculé

37 kDa

Isotype:

IgG

MW observés:

35 kDa

Applications

Applications testées:

WB, ELISA

Demandes citées:

IF, IHC, WB

Spécificité de l'espèce:

Humain, rat, souris

Espèces citées:

Humain, souris

Contrôles positifs:

WB : cellules DU 145, cellules HEK-293T, cellules HeLa, cellules Jurkat, cellules PC-3, tissu cardiaque de rat, tissu cardiaque de souris

Informations générales

LDHB, also named as NY-REN-46 and LDH-H, belongs to the LDH/MDH superfamily and LDH family. LDHB catalyzes the reaction: (S)-lactate + NAD⁺ = pyruvate + NADH. It is an enzyme which catalyzes the reversible conversion of lactate and pyruvate, and NAD and NADH, in the glycolytic pathway. It is glycolytic enzymes and it is positively regulated by mTOR. Defects in LDHB are a cause of hereditary LDHB deficiency. The antibody is specific to LDHB and has no cross reaction with LDHA and LDHC.

Publications notables

Autrice	Pubmed ID	Journal	Application
Iqra Ishrat	34762224	Mol Biol Rep	WB
Gunars Osis	33719570	Am J Physiol Renal Physiol	IHC, IF
Renato X Santos	35453617	Biomedicine	WB

Stockage

Stockage:

Stocker à -20°C. Stable pendant un an après l'expédition.

Tampon de stockage:

PBS avec azoture de sodium à 0,02 % et glycérol à 50 % pH 7,3

L'aliquotage n'est pas nécessaire pour le stockage à -20C

*** Les 20ul contiennent 0,1% de BSA.

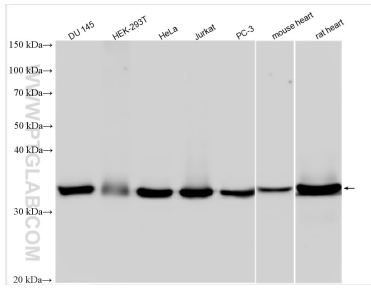
For technical support and original validation data for this product please contact:

T: 1 (888) 4PTGLAB (1-888-478-4522) (toll free in USA), or 1(312) 455-8498 (outside USA)

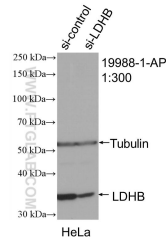
E: proteintech@ptglab.com
W: ptglab.com

This product is exclusively available under Proteintech Group brand and is not available to purchase from any other manufacturer.

Données de validation sélectionnées



Various lysates were subjected to SDS PAGE followed by western blot with 19988-1-AP (LDHB-Specific antibody) at dilution of 1:3000 incubated at room temperature for 1.5 hours.



WB result of LDHB-Specific antibody (19988-1-AP; 1:300; incubated at room temperature for 1.5 hours) with sh-Control and sh-LDHB-Specific transfected HeLa cells.