

À des fins de recherche uniquement

Anticorps Polyclonal de lapin anti-LDHC-Specific



Numéro de catalogue: 19989-1-AP

3 Publications

Informations de base

Numéro de catalogue:

19989-1-AP

Taille:

150ul, Concentration: 400 µg/ml by Nanodrop and 220 µg/ml by Bradford method using BSA as the standard;

Hôte:

Lapin

Isotype:

IgG

Numéro d'acquisition GenBank:

NM_002301

Identification du gène (NCBI):

3948

Nom complet:

lactate dehydrogenase C

MW calculé

36 kDa

MW observés:

30-36 kDa

Méthode de purification:

Purification par affinité contre l'antigène

Dilutions recommandées:

WB 1:200-1:1000

IP 0.5-4.0 ug for IP and 1:500-1:1000 for WB

IHC 1:200-1:800

IF 1:10-1:100

Applications

Applications testées:

IF, IHC, IP, WB, ELISA

Demandes citées:

IHC, WB

Spécificité de l'espèce:

Humain, souris

Espèces citées:

souris

Remarque-IHC: il est suggéré de démasquer l'antigène avec un tampon de TE buffer pH 9,0; (*) À défaut, le démasquage de l'antigène peut être effectué avec un tampon citrate pH 6,0.

Contrôles positifs:

WB : tissu testiculaire humain, cellules A549, tissu cérébral de souris, tissu pulmonaire de souris, tissu testiculaire de rat, tissu testiculaire de souris

IP : tissu testiculaire de souris,

IHC : tissu testiculaire de souris, tissu cardiaque humain, tissu testiculaire humain

IF : cellules HeLa,

Informations générales

LDHC, also named as CT32 and LDH-X, belongs to the LDH/MDH superfamily and LDH family. LDHC is a possible role in sperm motility. LDHC catalyzes the reaction: (S)-lactate + NAD⁺ = pyruvate + NADH. LDHC is a testis-specific isoform. Abnormal LDHC expression is associated with several forms of cancer. The antibody has no cross reaction with LDHA and LDHB.

Publications notables

Autrice	Pubmed ID	Journal	Application
Yuping Chen	34262451	Front Pharmacol	WB
Li Yang	31332157	Med Sci Monit	IHC
Rie Iida-Norita	36464740	Andrology	WB,IHC

Stockage

Stockage:

Stocker à -20°C. Stable pendant un an après l'expédition.

Tampon de stockage:

PBS avec azoture de sodium à 0,02 % et glycérol à 50 % pH 7,3

L'aliquotage n'est pas nécessaire pour le stockage à -20C

*** Les 20ul contiennent 0,1% de BSA.

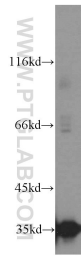
For technical support and original validation data for this product please contact:

T: 1 (888) 4PTGLAB (1-888-478-4522) (toll free in USA), or 1(312) 455-8498 (outside USA)

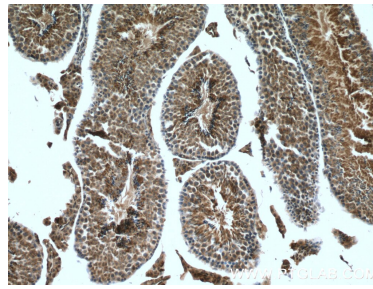
E: proteintech@ptglab.com
W: ptglab.com

This product is exclusively available under Proteintech Group brand and is not available to purchase from any other manufacturer.

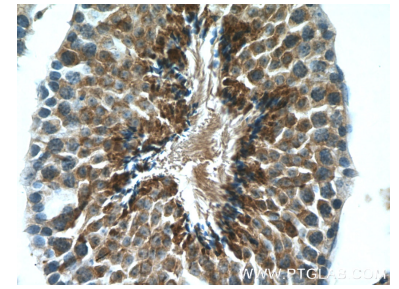
Données de validation sélectionnées



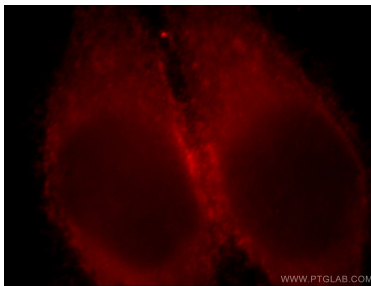
human testis tissue were subjected to SDS PAGE followed by western blot with 19989-1-AP (LDHC-Specific antibody) at dilution of 1:300 incubated at room temperature for 1.5 hours.



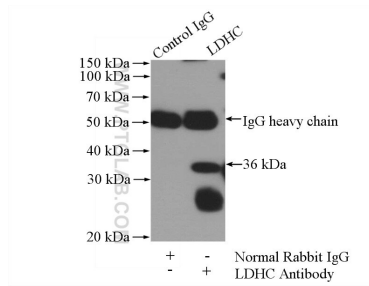
Immunohistochemical analysis of paraffin-embedded mouse testis tissue slide using 19989-1-AP (LDHC-Specific antibody) at dilution of 1:400 (under 10x lens. Heat mediated antigen retrieval with Tris-EDTA buffer (pH 9.0).



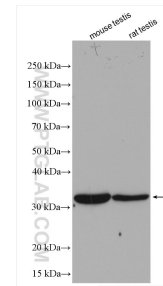
Immunohistochemical analysis of paraffin-embedded mouse testis tissue slide using 19989-1-AP (LDHC-Specific antibody) at dilution of 1:400 (under 40x lens. Heat mediated antigen retrieval with Tris-EDTA buffer (pH 9.0).



Immunofluorescent analysis of HeLa cells, using LDHC antibody 19989-1-AP at 1:25 dilution and Rhodamine-labeled goat anti-rabbit IgG (red).



IP Result of anti-LDHC-Specific (IP:19989-1-AP, 4ug; Detection:19989-1-AP 1:500) with mouse testis tissue lysate 2400ug.



Various lysates were subjected to SDS PAGE followed by western blot with 19989-1-AP (LDHC-Specific antibody) at dilution of 1:3000 incubated at room temperature for 1.5 hours.