

À des fins de recherche uniquement

# Anticorps Polyclonal de lapin anti-HBA1-Specific



Numéro de catalogue: 19990-1-AP

## Informations de base

|  |   |  |
|--|---|--|
| <b>Numéro de catalogue:</b><br>19990-1-AP  | <b>Numéro d'acquisition GenBank:</b><br>NM_000558 | <b>Méthode de purification:</b><br>Purification par affinité contre l'antigène |
| <b>Taille:</b><br>150ul , Concentration: 500 µg/ml by Nanodrop and 333 µg/ml by Bradford method using BSA as the standard; | <b>Identification du gène (NCBI):</b><br>3039     | <b>Dilutions recommandées:</b><br>WB 1:200-1:1000<br>IF 1:50-1:500             |
| <b>Hôte:</b><br>Lapin  | <b>Nom complet:</b><br>hemoglobin, alpha 1        |  |
| <b>Isotype:</b><br>IgG   | <b>MW calculé:</b><br>16 kDa                      |  |
|  | <b>MW observés:</b><br>14-16 kDa                  |  |

## Applications

|   |   |
|---|---|
| <b>Applications testées:</b><br>IF, WB, ELISA | <b>Contrôles positifs:</b><br>WB : tissu cardiaque humain, tissu splénique humain<br>IF : cellules LNCaP, |
| <b>Spécificité de l'espèce:</b><br>Humain     |   |

## Informations générales

The hemoglobin molecule is a tetramer consisting of two alpha- and two beta-globin-like chains. HBA1 (hemoglobin alpha chain) protein is a alpha-type chain of hemoglobin encoded by two independent genes (HBA1 and HBA2) whose coding sequences are identical. Two alpha chains coupled with two beta chains constitute the adult hemoglobin (HbA or  $\alpha_2\beta_2$ ). HBA1 is also the component of fetal hemoglobin (HbF or  $\alpha_2\gamma_2$ ). This antibody detects a major band around 14-16 kDa in the western blot analysis of heart tissue and K-562 cells. A higher band around 26-27 kDa can also be observed occasionally, which may represent the dimer form of HBA1 (PMID: 20836851). The antibody is specific to HBA1 and has no cross reaction to other globin member.

## Stockage

**Stockage:**  
Stocker à -20°C. Stable pendant un an après l'expédition.  
**Tampon de stockage:**  
PBS avec azoture de sodium à 0,02 % et glycérol à 50 % pH 7,3  
L'aliquotage n'est pas nécessaire pour le stockage à -20C

\*\*\* Les 20ul contiennent 0,1% de BSA.

For technical support and original validation data for this product please contact:

T: 1 (888) 4PTGLAB (1-888-478-4522) (toll free in USA), or 1(312) 455-8498 (outside USA)

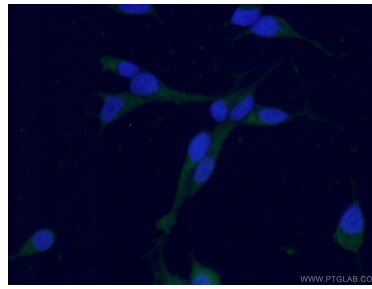
E: [proteintech@ptglab.com](mailto:proteintech@ptglab.com)  
W: [ptglab.com](http://ptglab.com)

This product is exclusively available under Proteintech Group brand and is not available to purchase from any other manufacturer.

## Données de validation sélectionnées



human heart tissue were subjected to SDS PAGE followed by western blot with 19990-1-AP (HBA1-Specific antibody) at dilution of 1:300 incubated at room temperature for 1.5 hours.



Immunofluorescent analysis of (-20°C Ethanol) fixed LNCaP cells using 19990-1-AP (HBA1-Specific antibody) at dilution of 1:50 and Alexa Fluor 488-conjugated AffiniPure Goat Anti-Rabbit IgG(H+L).