

À des fins de recherche uniquement

Anticorps Polyclonal de lapin anti-HBG1-Specific



Numéro de catalogue: 19993-1-AP

Informations de base

Numéro de catalogue:

19993-1-AP

Taille:

150ul, Concentration: 150 µg/ml by Nanodrop and 133 µg/ml by Bradford method using BSA as the standard;

Hôte:

Lapin

Isotype:

IgG

Numéro d'acquisition GenBank:

NM_000559

Identification du gène (NCBI):

3047

Nom complet:

hemoglobin, gamma A

MW calculé

16 kDa

Méthode de purification:

Purification par affinité contre l'antigène

Dilutions recommandées:

WB 1:1000-1:4000

Applications

Applications testées:

FC, WB, ELISA

Spécificité de l'espèce:

Humain

Contrôles positifs:

WB : protéine recombinante, tissu placentaire humain

Informations générales

HBG1, also named as Hb F Agamma, HBGA, HBGR and HSGGL, belongs to the globin family. HBG1 makes up the fetal hemoglobin F, in combination with alpha chains. Some gamma variants can cause severe jaundice and cyanosis in premature and new born babies. The antibody is specific to HBG1 and HBG2. The antibody has no cross reaction to HBB and HBD. HBG1 protein migrates around 16 kDa. Heterodimer of 32 kDa may also be observed.

Stockage

Stockage:

Stocker à -20°C. Stable pendant un an après l'expédition.

Tampon de stockage:

PBS avec azoture de sodium à 0,02 % et glycérol à 50 % pH 7,3

L'aliquotage n'est pas nécessaire pour le stockage à -20C

*** Les 20ul contiennent 0,1% de BSA.

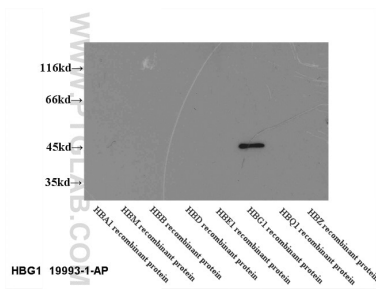
For technical support and original validation data for this product please contact:

T: 1 (888) 4PTGLAB (1-888-478-4522) (toll free in USA), or 1(312) 455-8498 (outside USA)

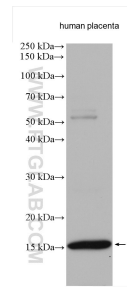
E: proteintech@ptglab.com
W: ptglab.com

This product is exclusively available under Proteintech Group brand and is not available to purchase from any other manufacturer.

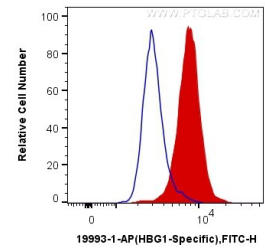
Données de validation sélectionnées



WB results of 19993-1-AP (HBG1 antibody) at dilution of 1:2000.



human placenta tissue was subjected to SDS PAGE followed by western blot with 19993-1-AP (HBG1-Specific antibody) at dilution of 1:800 incubated at room temperature for 1.5 hours.



1X10⁶ K-562 cells were intracellularly stained with 0.4 ug Anti-Human HBG1-Specific (19993-1-AP) and CoraLite®488-Conjugated AffiniPure Goat Anti-Rabbit IgG(H+L) at dilution 1:1000 (red), or 0.4 ug Control Antibody. Cells were fixed with 4% PFA and permeabilized with Flow Cytometry Perm Buffer (PF00011-C).