

À des fins de recherche uniquement

# Anticorps Polyclonal de lapin anti-CIT



Numéro de catalogue: 20033-1-AP

2 Publications

## Informations de base

Numéro de catalogue:  
20033-1-AP

Taille:  
150ul, Concentration: 450 µg/ml by  
Nanodrop and 367 µg/ml by Bradford  
method using BSA as the standard;

Hôte:  
Lapin

Isotype:  
IgG

Numéro d'acquisition GenBank:  
NM\_007174

Identification du gène (NCBI):  
11113

Nom complet:  
citron (rho-interacting,  
serine/threonine kinase 21)

MW calculé  
231 kDa

MW observés:  
230 kDa, 177 kDa

Méthode de purification:  
Purification par affinité contre  
l'antigène

Dilutions recommandées:  
WB 1:500-1:2000  
IF 1:10-1:100

## Applications

Applications testées:  
IF, WB, ELISA

Demandes citées:  
WB

Spécificité de l'espèce:  
Humain, rat, souris

Espèces citées:  
Humain, souris

Contrôles positifs:

WB : cellules A431, cellules HeLa, tissu cérébral de  
souris

IF : cellules HepG2,

## Informations générales

CIT, also named KIAA0949, STK21 and CR1K, belongs to the protein kinase superfamily and AGC Ser/Thr protein kinase family. It is required for KIF14 localization to the central spindle and midbody. CIT may play a role in cytokinesis. Putative RHO/RAC effector that binds to the GTP-bound forms of RHO and RAC1. It probably binds p21 with a tighter specificity in vivo. CIT plays an important role in the regulation of cytokinesis and the development of the central nervous system. The antibody recognizes all the isoforms of CIT.

## Publications notables

Autrice	Pubmed ID	Journal	Application
Federica Morani	33800494	Int J Mol Sci	WB
Kelsey L Swartz	27795297	Mol Cell Biol	WB

## Stockage

Stockage:

Stocker à -20°C. Stable pendant un an après l'expédition.

Tampon de stockage:

PBS avec azoture de sodium à 0,02 % et glycérol à 50 % pH 7,3

L'aliquotage n'est pas nécessaire pour le stockage à -20C

\*\*\* Les 20ul contiennent 0,1% de BSA.

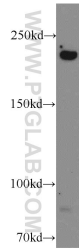
For technical support and original validation data for this product please contact:

T: 1 (888) 4PTGLAB (1-888-478-4522) (toll free  
in USA), or 1(312) 455-8498 (outside USA)

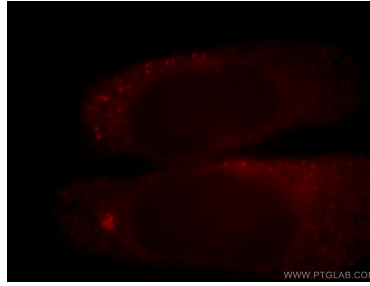
E: proteintech@ptglab.com  
W: ptglab.com

This product is exclusively available under Proteintech Group brand and is not available to purchase from any other manufacturer.

## Données de validation sélectionnées



A431 cells were subjected to SDS PAGE followed by western blot with 20033-1-AP (CIT antibody) at dilution of 1:300 incubated at room temperature for 1.5 hours.



Immunofluorescent analysis of HepG2 cells, using CIT antibody 20033-1-AP at 1:25 dilution and Rhodamine-labeled goat anti-rabbit IgG (red).