

À des fins de recherche uniquement

Anticorps Polyclonal de lapin anti-LPHN3



Numéro de catalogue: 20045-1-AP

1 Publications

Informations de base

Numéro de catalogue:
20045-1-AP

Taille:
150ul , Concentration: 500 µg/ml by
Nanodrop and 320 µg/ml by Bradford
method using BSA as the standard;

Hôte:
Lapin

Isotype:
IgG

Numéro d'acquisition GenBank:
NM_015236

Identification du gène (NCBI):
23284

Nom complet:
latrophilin 3

MW calculé
162 kDa

MW observés:
139 kDa

Méthode de purification:
Purification par affinité contre
l'antigène

Dilutions recommandées:
WB 1:500-1:1000
IP 0.5-4.0 ug for IP and 1:200-1:1000
for WB

Applications

Applications testées:
FC, IP, WB, ELISA

Demandes citées:
WB

Spécificité de l'espèce:
Humain, rat, souris

Espèces citées:
Humain

Contrôles positifs:

WB : tissu cérébral de souris, cellules COLO 320,
cellules HepG2, tissu cérébral de rat, tissu de côlon de
souris, tissu hépatique humain

IP : tissu cérébral de souris,

Informations générales

LPHN3, also named as KIAA0768 and LEC3, belongs to the G-protein coupled receptor 2 family and LN-TM7 subfamily. LPHN3 forms a heterodimer, consisting of a large extracellular region (p120) non-covalently linked to a seven-transmembrane moiety (p85). This antibody recognizes all the isoforms of LPHN3 and has no cross reaction with LPHN1 and LPHN2.

Publications notables

Autrice	Pubmed ID	Journal	Application
Rhiannon V McNeill	32787626	World J Biol Psychiatry	WB

Stockage

Stockage:

Stocker à -20°C. Stable pendant un an après l'expédition.

Tampon de stockage:

PBS avec azoture de sodium à 0,02 % et glycérol à 50 % pH 7,3

L'aliquotage n'est pas nécessaire pour le stockage à -20C

*** Les 20ul contiennent 0,1% de BSA.

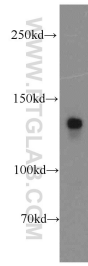
For technical support and original validation data for this product please contact:

T: 1 (888) 4PTGLAB (1-888-478-4522) (toll free
in USA), or 1(312) 455-8498 (outside USA)

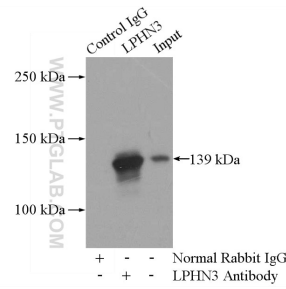
E: proteintech@ptglab.com
W: ptglab.com

This product is exclusively available under Proteintech Group brand and is not available to purchase from any other manufacturer.

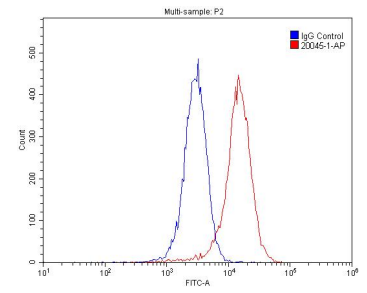
Données de validation sélectionnées



mouse brain tissue were subjected to SDS PAGE followed by western blot with 20045-1-AP (LPHN3 antibody) at dilution of 1:600 incubated at room temperature for 1.5 hours.



IP Result of anti-LPHN3 (IP:20045-1-AP, 4ug; Detection:20045-1-AP 1:300) with mouse brain tissue lysate 4000ug.



1X10⁶ HepG2 cells were stained with .2ug LPHN3 antibody (20045-1-AP, red) and control antibody (blue). Fixed with 4% PFA blocked with 3% BSA (30 min). Alexa Fluor 488-conjugated AffiniPure Goat Anti-Rabbit IgG(H+L) with dilution 1:1500.