

À des fins de recherche uniquement

Anticorps Polyclonal de lapin anti-MED13L



Numéro de catalogue: 20046-1-AP

Informations de base

Numéro de catalogue: 20046-1-AP	Numéro d'acquisition GenBank: NM_015335	Méthode de purification: Purification par affinité contre l'antigène
Taille: 150ul , Concentration: 100 µg/ml by Nanodrop and 200 µg/ml by Bradford method using BSA as the standard;	Identification du gène (NCBI): 23389	Dilutions recommandées: WB 1:500-1:1000
Hôte: Lapin	Nom complet: mediator complex subunit 13-like	
Isotype: IgG	MW calculé: 243 kDa	
	MW observés: 240 kDa	

Applications

Applications testées: WB, ELISA	Contrôles positifs: WB : cellules K-562,
Spécificité de l'espèce: Humain	

Informations générales

MED13L, also named as KIAA1025, PROSIT240, THRAP2 and TRAP240L, belongs to the Mediator complex subunit 13 family. It is a component of the Mediator complex, a coactivator involved in the regulated transcription of nearly all RNA polymerase II-dependent genes. MED13L is a mediator functions as a bridge to convey information from gene-specific regulatory proteins to the basal RNA polymerase II transcription machinery. MED13L is recruited to promoters by direct interactions with regulatory proteins and serves as a scaffold for the assembly of a functional preinitiation complex with RNA polymerase II and the general transcription factors. This subunit may specifically regulate transcription of targets of the Wnt signaling pathway and SHH signaling pathway. The antibody has no cross reaction to MED13.

Stockage

Stockage:
Stocker à -20°C. Stable pendant un an après l'expédition.
Tampon de stockage:
PBS avec azoture de sodium à 0,02 % et glycérol à 50 % pH 7,3
L'aliquotage n'est pas nécessaire pour le stockage à -20C

*** Les 20ul contiennent 0,1% de BSA.

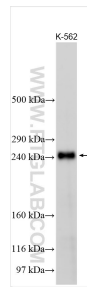
For technical support and original validation data for this product please contact:

T: 1 (888) 4PTGLAB (1-888-478-4522) (toll free in USA), or 1(312) 455-8498 (outside USA)

E: proteintech@ptglab.com
W: ptglab.com

This product is exclusively available under Proteintech Group brand and is not available to purchase from any other manufacturer.

Données de validation sélectionnées



Various lysates were subjected to SDS PAGE followed by western blot with 20046-1-AP (MED13L antibody) at dilution of 1:500 incubated at room temperature for 1.5 hours.