

À des fins de recherche uniquement

Anticorps Polyclonal de lapin anti-MED12L



Numéro de catalogue: 20047-1-AP

Informations de base

Numéro de catalogue: 20047-1-AP	Numéro d'acquisition GenBank: NM_053002	Méthode de purification: Purification par affinité contre l'antigène
Taille: 150ul , Concentration: 300 µg/ml by Nanodrop and 333 µg/ml by Bradford method using BSA as the standard;	Identification du gène (NCBI): 116931	Dilutions recommandées: WB 1:500-1:1000
Hôte: Lapin	Nom complet: mediator complex subunit 12-like	
Isotype: IgG	MW calculé: 240 kDa	
	MW observés: 260-280 kDa	

Applications

Applications testées: WB, ELISA	Contrôles positifs: WB : tissu hépatique de souris,
Spécificité de l'espèce: souris	

Informations générales

MED12L, also named as KIAA1635, TNRC11L, TRALP and TRALPUSH, belongs to the Mediator complex subunit 12 family. MED12L may be a component of the Mediator complex, a coactivator involved in the regulated transcription of nearly all RNA polymerase II-dependent genes. MED12L is a mediator functions as a bridge to convey information from gene-specific regulatory proteins to the basal RNA polymerase II transcription machinery. MED12L is recruited to promoters by direct interactions with regulatory proteins and serves as a scaffold for the assembly of a functional preinitiation complex with RNA polymerase II and the general transcription factors. The antibody can recognize all the isoform of MED12L. The antibody has no cross reaction to MED12.

Stockage

Stockage:
Stocker à -20°C. Stable pendant un an après l'expédition.
Tampon de stockage:
PBS avec azoture de sodium à 0,02 % et glycérol à 50 % pH 7,3
L'aliquotage n'est pas nécessaire pour le stockage à -20C

*** Les 20ul contiennent 0,1% de BSA.

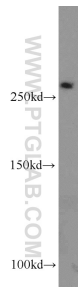
For technical support and original validation data for this product please contact:

T: 1 (888) 4PTGLAB (1-888-478-4522) (toll free in USA), or 1(312) 455-8498 (outside USA)

E: proteintech@ptglab.com
W: ptglab.com

This product is exclusively available under Proteintech Group brand and is not available to purchase from any other manufacturer.

Données de validation sélectionnées



mouse liver tissue were subjected to SDS PAGE followed by western blot with 20047-1-AP (MED12L antibody) at dilution of 1:500 incubated at room temperature for 1.5 hours.