

À des fins de recherche uniquement

Anticorps Polyclonal de lapin anti-MUC16,CA125



Numéro de catalogue: 20077-1-AP

Phare

6 Publications

Informations de base

Numéro de catalogue:
20077-1-AP

Taille:
150ul , Concentration: 900 µg/ml by Nanodrop and 413 µg/ml by Bradford method using BSA as the standard;

Hôte:
Lapin

Isotype:
IgG

Numéro d'acquisition GenBank:
NM_024690

Identification du gène (NCBI):
94025

Nom complet:
mucin 16, cell surface associated

MW calculé
1519 kDa

MW observés:
90-100 kDa

Méthode de purification:
Purification par affinité contre l'antigène

Dilutions recommandées:
WB 1:500-1:1000
IP 0.5-4.0 ug for IP and 1:500-1:1000 for WB
IHC 1:50-1:500

Applications

Applications testées:
IHC, IP, WB, ELISA

Demandes citées:
IHC, WB

Spécificité de l'espèce:
Humain

Espèces citées:
Humain

Remarque-IHC: il est suggéré de démasquer l'antigène avec un tampon de TE buffer pH 9,0; (*) À défaut, le démasquage de l'antigène peut être effectué avec un tampon citrate pH 6,0.

Contrôles positifs:

WB : cellules HeLa,

IP : cellules HeLa,

IHC : tissu de tumeur ovarienne humain,

Informations générales

MUC16, also named as CA125, is thought to provide a protective, lubricating barrier against particles and infectious agents at mucosal surfaces. It is a serum marker that is used routinely in gynecologic practice to monitor patients with ovarian cancer. Most biochemical studies have concluded that MUC16 is a high molecular mass glycoprotein, although estimates of its size range from 200 to 2000 kDa with smaller "subunits" being described by some investigators. The antibody recognizes the C-term of MUC16.

Publications notables

Autrice	Pubmed ID	Journal	Application
Huijin Zhao	30389134	Biochem Biophys Res Commun	WB
Kexin Shi	35247514	Toxicology	WB
Tomoaki Furuta	34115906	Cancer Sci	IHC

Stockage

Stockage:

Stocker à -20°C. Stable pendant un an après l'expédition.

Tampon de stockage:

PBS avec azoture de sodium à 0,02 % et glycérol à 50 % pH 7,3

L'aliquotage n'est pas nécessaire pour le stockage à -20C

*** Les 20ul contiennent 0,1% de BSA.

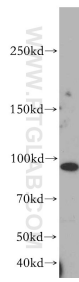
For technical support and original validation data for this product please contact:

T: 1 (888) 4PTGLAB (1-888-478-4522) (toll free in USA), or 1(312) 455-8498 (outside USA)

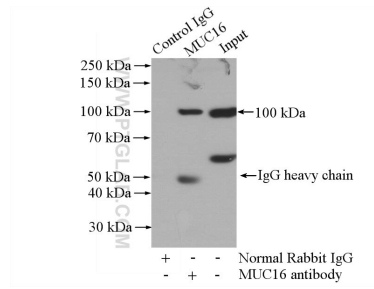
E: proteintech@ptglab.com
W: ptglab.com

This product is exclusively available under Proteintech Group brand and is not available to purchase from any other manufacturer.

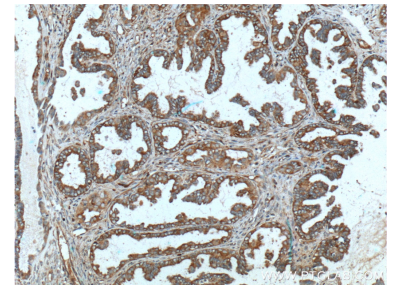
Données de validation sélectionnées



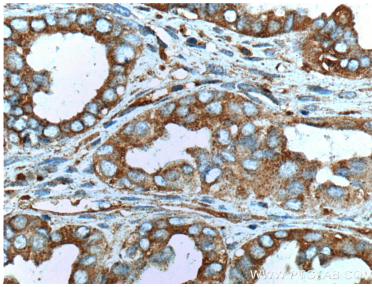
HeLa cells were subjected to SDS PAGE followed by western blot with 20077-1-AP (MUC16,CA125 antibody) at dilution of 1:300 incubated at room temperature for 1.5 hours.



IP Result of anti-MUC16,CA125 (IP:20077-1-AP, 4ug; Detection:20077-1-AP 1:600) with HeLa cells lysate 1200ug.



Immunohistochemical analysis of paraffin-embedded human ovary tumor tissue slide using 20077-1-AP (MUC16,CA125 Antibody) at dilution of 1:200 (under 10x lens). Heat mediated antigen retrieval with Tris-EDTA buffer (pH 9.0).



Immunohistochemical analysis of paraffin-embedded human ovary tumor tissue slide using 20077-1-AP (MUC16,CA125 Antibody) at dilution of 1:200 (under 40x lens). Heat mediated antigen retrieval with Tris-EDTA buffer (pH 9.0).