

À des fins de recherche uniquement

# Anticorps Polyclonal de lapin anti-MYSM1-Specific



Numéro de catalogue: 20078-1-AP

Phare

1 Publications

## Informations de base

Numéro de catalogue:

20078-1-AP

Taille:

150ul, Concentration: 350 µg/ml by Nanodrop and 200 µg/ml by Bradford method using BSA as the standard;

Hôte:

Lapin

Isotype:

IgG

Numéro d'acquisition GenBank:

NM\_001085487

Identification du gène (NCBI):

114803

Nom complet:

Myb-like, SWIRM and MPN domains 1

MW calculé

95 kDa

MW observés:

81 kDa

Méthode de purification:

Purification par affinité contre l'antigène

Dilutions recommandées:

WB 1:300-1:600

IP 0.5-4.0 ug for IP and 1:200-1:1000 for WB

IHC 1:20-1:200

IF 1:50-1:500

## Applications

Applications testées:

IF, IHC, IP, WB, ELISA

Demandes citées:

IHC

Spécificité de l'espèce:

Humain

Espèces citées:

Humain

Contrôles positifs:

WB : cellules HeLa, cellules A549, cellules HEK-293, cellules HepG2

IP : cellules HeLa,

IHC : tissu splénique humain,

IF : cellules HeLa,

**Remarque-IHC: il est suggéré de démasquer l'antigène avec un tampon de TE buffer pH 9,0; (\*) À défaut, le démasquage de l'antigène peut être effectué avec un tampon citrate pH 6,0.**

## Informations générales

MYSM1, also named as KIAA1915, belongs to the peptidase M67A family and MYSM1 subfamily. MYSM1 is a metalloprotease that specifically deubiquitinates monoubiquitinated histone H2A, a specific tag for epigenetic transcriptional repression, thereby acting as a coactivator. Deubiquitination of histone H2A leads to facilitate the phosphorylation and dissociation of histone H1 from the nucleosome. MYSM1 acts as a coactivator by participating in the initiation and elongation steps of androgen receptor (AR)-induced gene activation. It catalyzes the reaction: Ubiquitin C-terminal thioester + H<sub>2</sub>O = ubiquitin + a thiol. MYSM1 is a marker of cancer. The antibody is specific to MYSM1.

## Publications notables

Autrice	Pubmed ID	Journal	Application
Xiaolin Guan	35217648	Cell Death Discov	IHC

## Stockage

Stockage:

Stocker à -20°C. Stable pendant un an après l'expédition.

Tampon de stockage:

PBS avec azoture de sodium à 0,02 % et glycérol à 50 % pH 7,3

L'aliquotage n'est pas nécessaire pour le stockage à -20C

\*\*\* Les 20ul contiennent 0,1% de BSA.

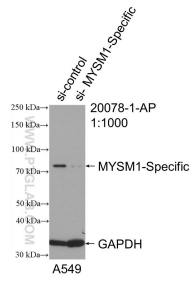
For technical support and original validation data for this product please contact:

T: 1 (888) 4PTGLAB (1-888-478-4522) (toll free in USA), or 1(312) 455-8498 (outside USA)

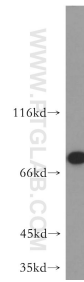
E: proteintech@ptglab.com  
W: ptglab.com

This product is exclusively available under Proteintech Group brand and is not available to purchase from any other manufacturer.

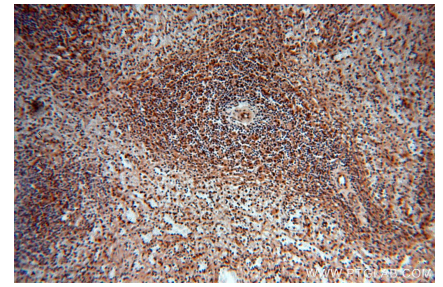
## Données de validation sélectionnées



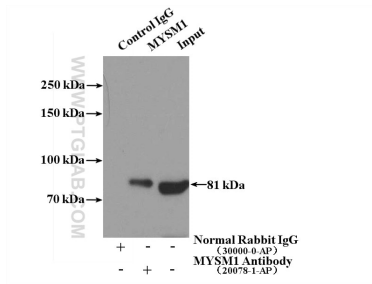
WB result of MYSM1-Specific antibody (20078-1-AP; 1:1000; incubated at room temperature for 1.5 hours) with sh-Control and sh-MYSM1-Specific transfected A549 cells.



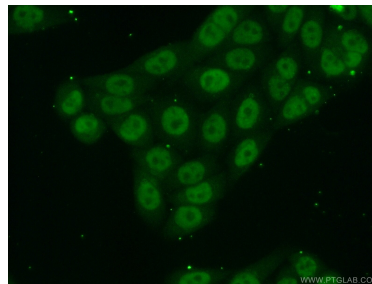
HeLa cells were subjected to SDS PAGE followed by western blot with 20078-1-AP (MYSM1-Specific antibody) at dilution of 1:300 incubated at room temperature for 1.5 hours.



Immunohistochemical analysis of paraffin-embedded human spleen using 20078-1-AP (MYSM1-Specific antibody) at dilution of 1:100 (under 10x lens).



IP Result of anti-MYSM1-Specific (IP:20078-1-AP, 4ug; Detection:20078-1-AP 1:300) with HeLa cells lysate 3200ug.



Immunofluorescent analysis of (10% Formaldehyde) fixed HeLa cells using 20078-1-AP (MYSM1-Specific antibody) at dilution of 1:50 and Alexa Fluor 488-conjugated AffiniPure Goat Anti-Rabbit IgG(H+L).